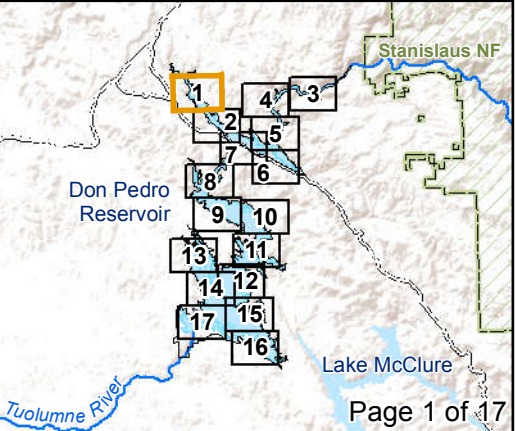
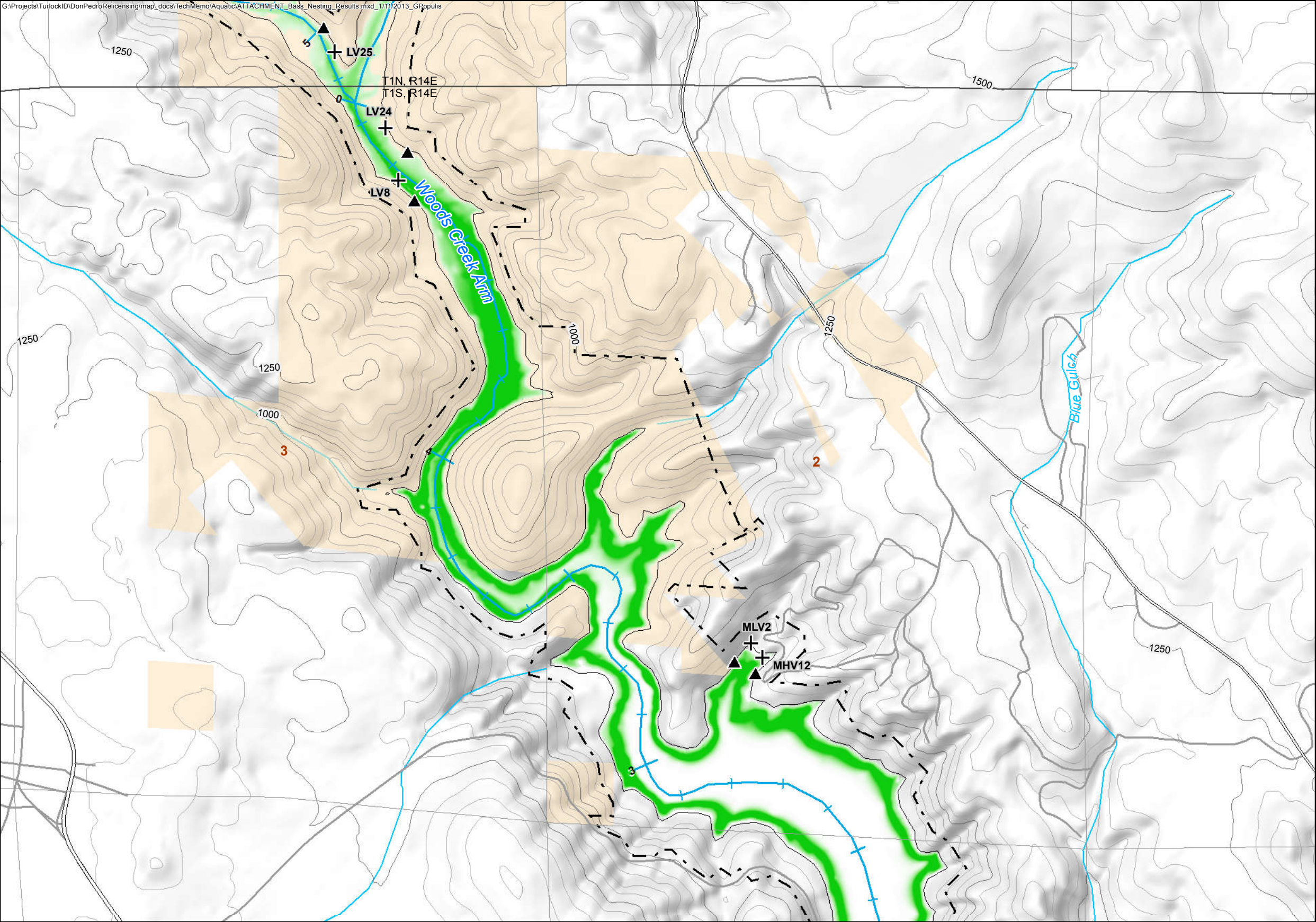


**STUDY REPORT WAR-17
RESERVOIR FISH POPULATION**

ATTACHMENT A

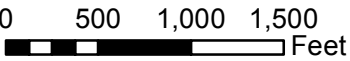
BASS NESTING SUITABILITY AND SURVEY RESULTS



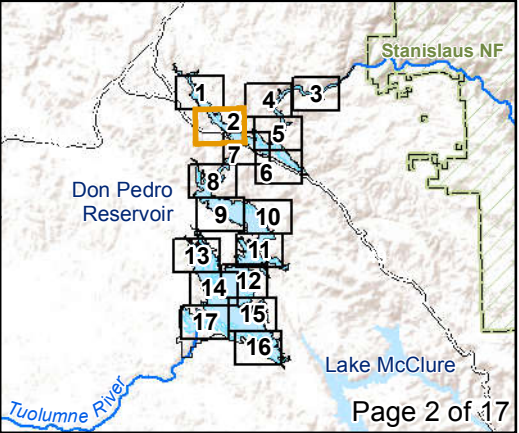
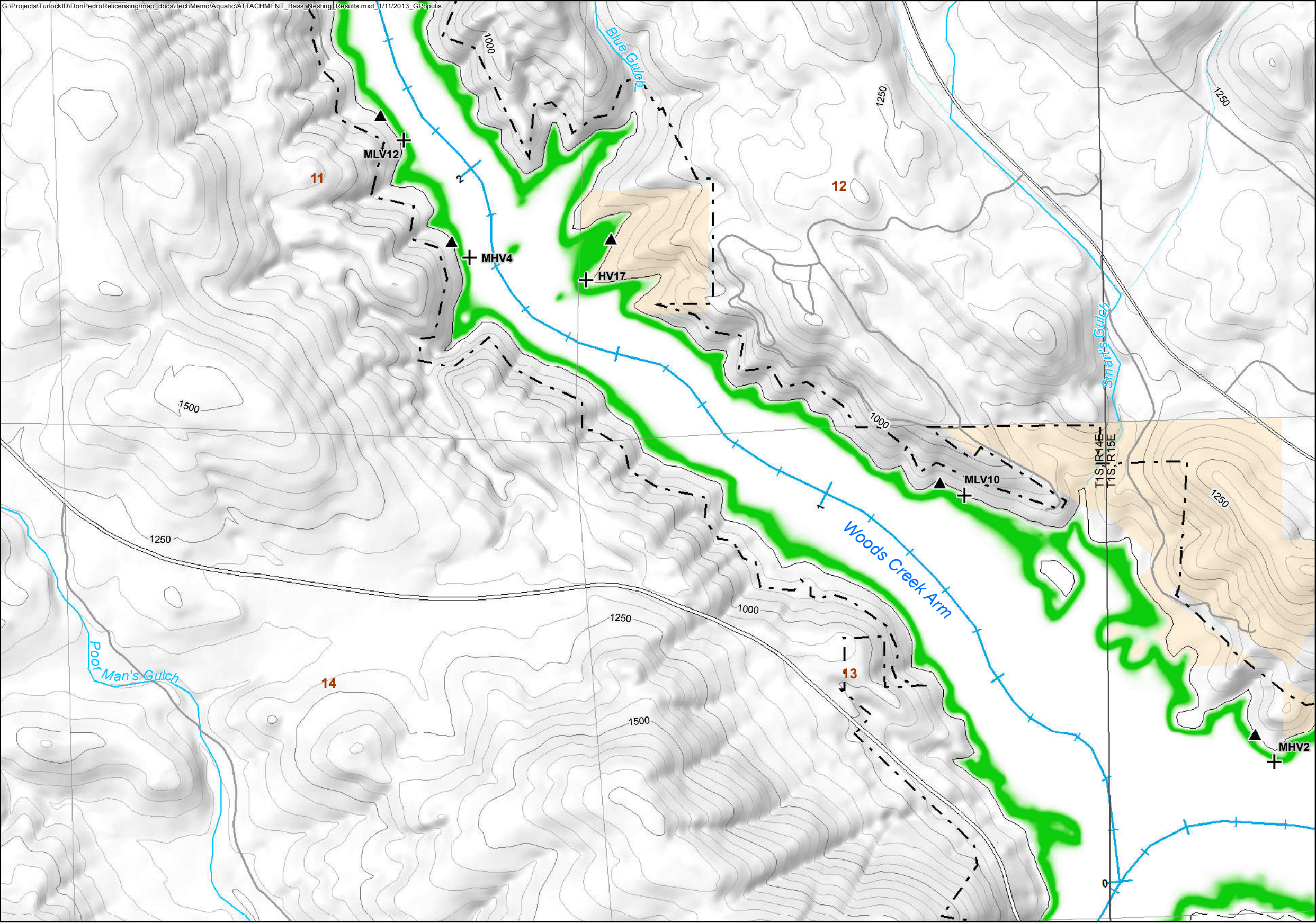
Survey Results and Transects
(Refer to Text For Label Codes)

- Observed Black Bass Nest Location
- ▲ Transect Boundary Ends
- ⊕ Transect Boundary Starts
- 55 River Miles to Confluence with San Joaquin River
- ▭ FERC Project Boundary (No. 2299)
- ▭ Current Shoreline (May 1, 2012)
- ▭ BLM Area of Critical Environmental Concern 'Red Hills'
- Federal Land Ownership**
 - ▭ Bureau of Land Management

Bass Nesting Predicted Suitability



Map information was compiled from the best available sources. No warranty is made for its accuracy or completeness. Data Sources: Roads, Streams - ESRI; Ownership, PLSS - CA BLM; FERC Boundary, Recreation, Facilities: MID/TID. Data is CA SPCS, zone III, ft. Contour interval is 50 ft (NAVD 88).

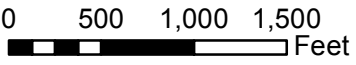
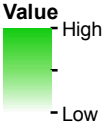


Survey Results and Transects

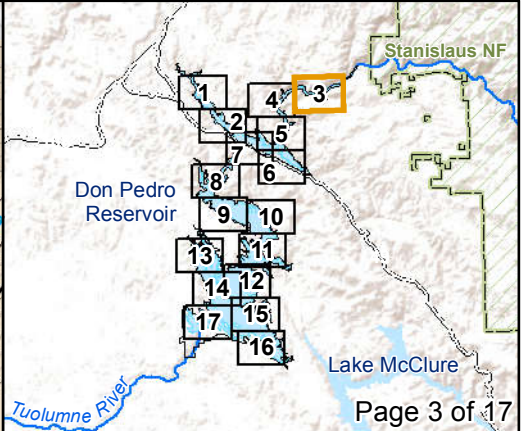
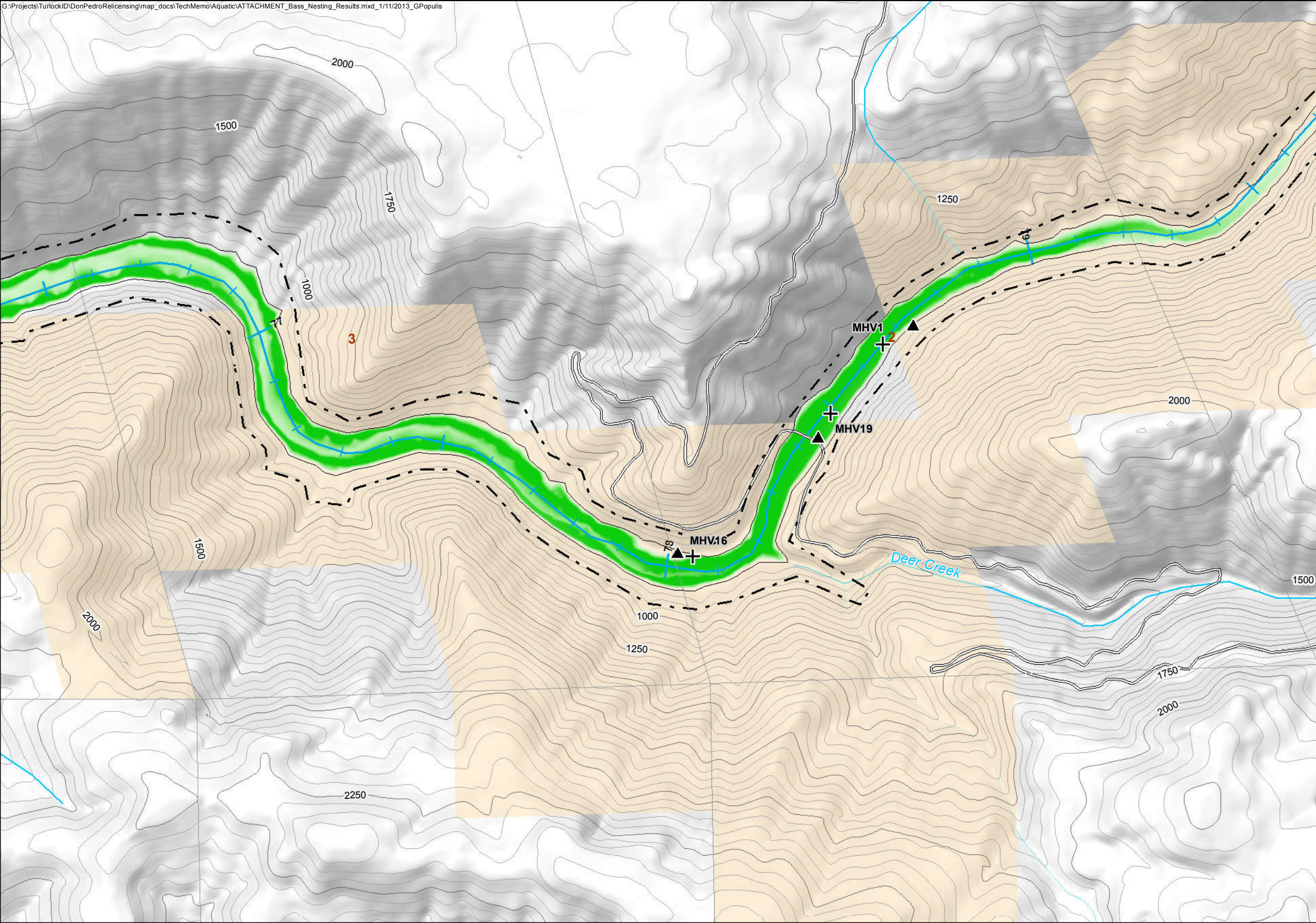
(Refer to Text For Label Codes)

- Observed Black Bass Nest Location
- ▲ Transect Boundary Ends
- ⊕ Transect Boundary Starts
- 55 River Miles to Confluence with San Joaquin River
- FERC Project Boundary (No. 2299)
- Current Shoreline (May 1, 2012)
- ▨ BLM Area of Critical Environmental Concern 'Red Hills'
- Federal Land Ownership**
 - Bureau of Land Management

Bass Nesting Predicted Suitability



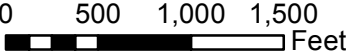
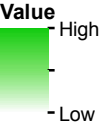
Map information was compiled from the best available sources. No warranty is made for its accuracy or completeness. Data Sources: Roads, Streams - ESRI; Ownership, PLSS - CA BLM; FERC Boundary, Recreation, Facilities: MID/TID. Data is CA SPCS, zone III, ft. Contour interval is 50 ft (NAVD 88).



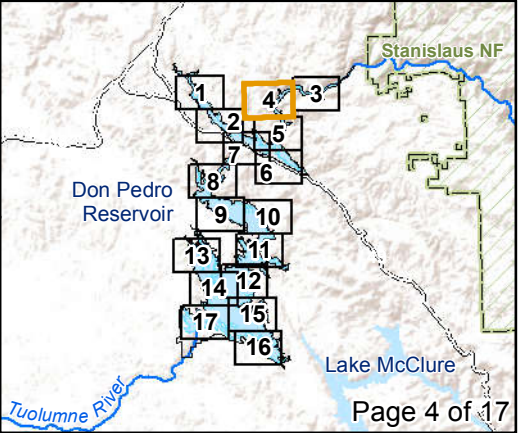
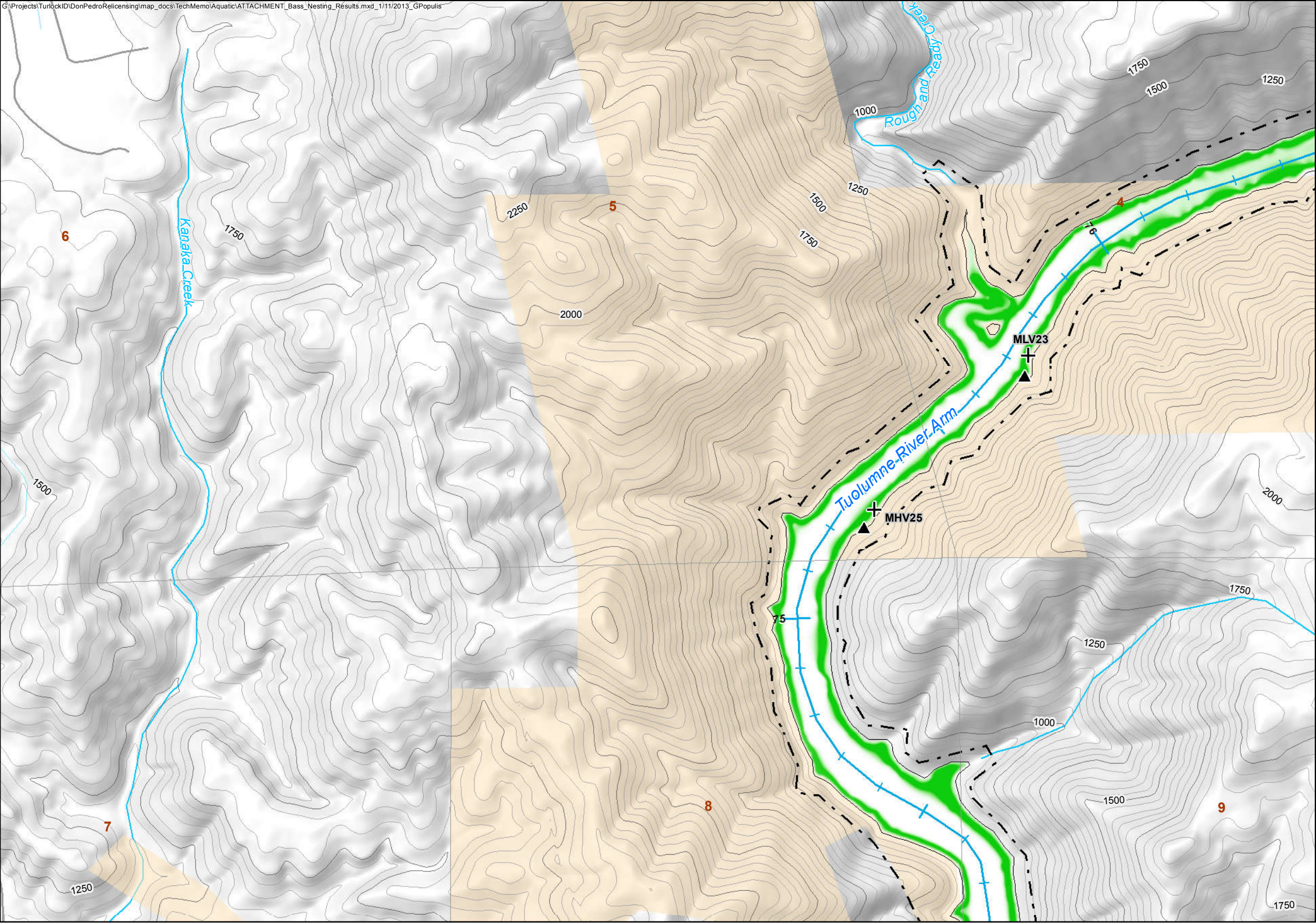
Survey Results and Transects
(Refer to Text For Label Codes)

- Observed Black Bass Nest Location
- ▲ Transect Boundary Ends
- ⊕ Transect Boundary Starts
- 55 River Miles to Confluence with San Joaquin River
- ⬜ FERC Project Boundary (No. 2299)
- ⬜ Current Shoreline (May 1, 2012)
- ⬜ BLM Area of Critical Environmental Concern 'Red Hills'
- Federal Land Ownership**
- ⬜ Bureau of Land Management

Bass Nesting Predicted Suitability



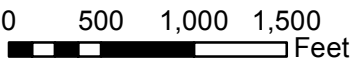
Map information was compiled from the best available sources. No warranty is made for its accuracy or completeness.
Data Sources: Roads, Streams - ESRI; Ownership, PLSS - CA BLM; FERC Boundary, Recreation, Facilities: MID/TID. Data is CA SPCS, zone III, ft. Contour interval is 50 ft (NAVD 88).



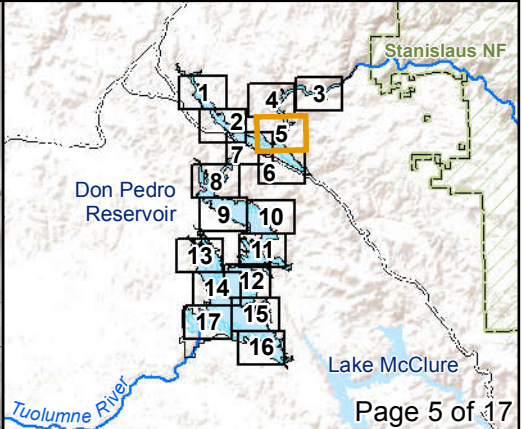
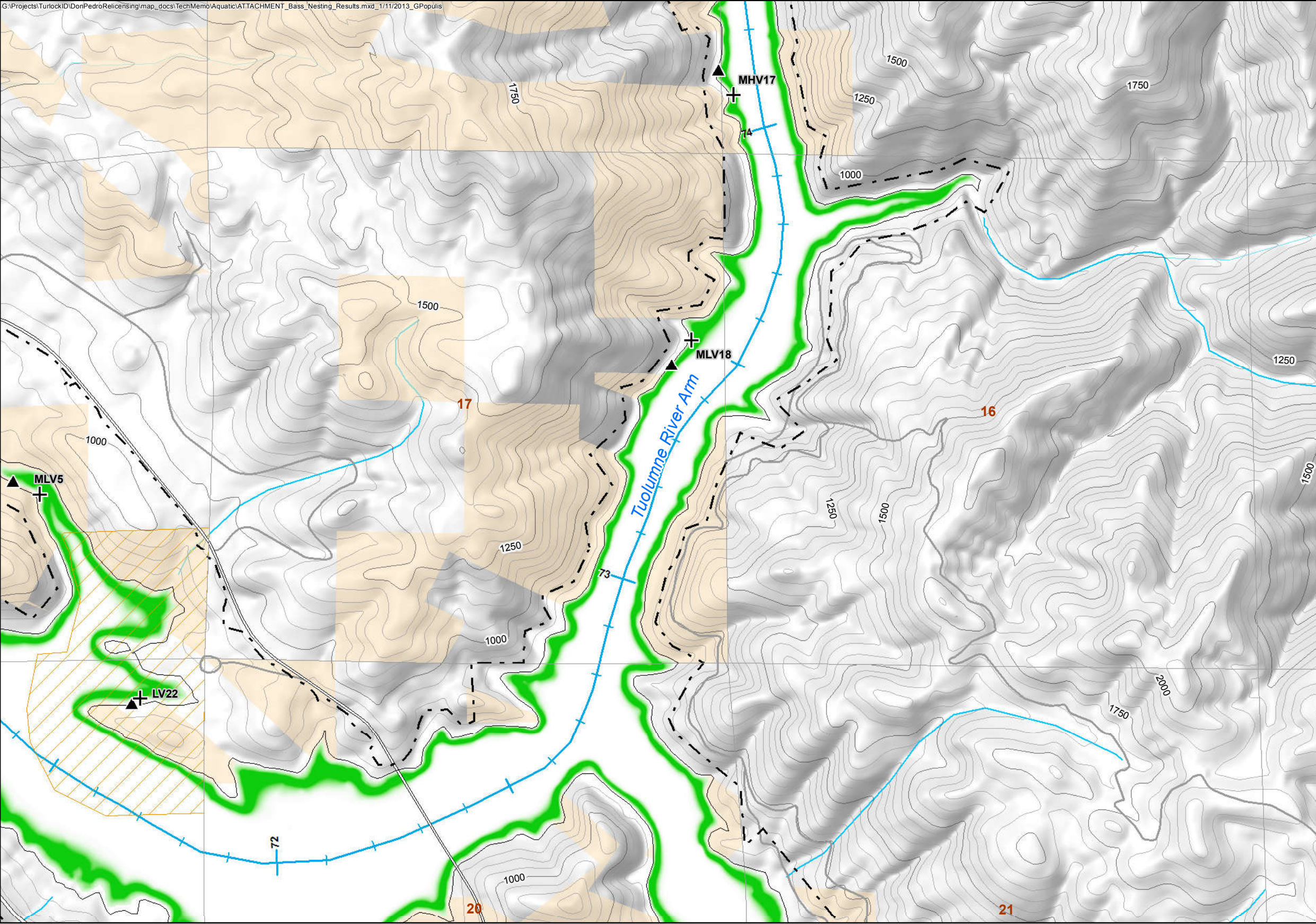
Survey Results and Transects
(Refer to Text For Label Codes)

- Observed Black Bass Nest Location
- ▲ Transect Boundary Ends
- ⊕ Transect Boundary Starts
- 55 River Miles to Confluence with San Joaquin River
- ⬜ FERC Project Boundary (No. 2299)
- ⬜ Current Shoreline (May 1, 2012)
- ⬜ BLM Area of Critical Environmental Concern 'Red Hills'
- Federal Land Ownership**
- ⬜ Bureau of Land Management

Bass Nesting Predicted Suitability



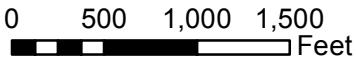
Map information was compiled from the best available sources. No warranty is made for its accuracy or completeness. Data Sources: Roads, Streams - ESRI; Ownership, PLSS - CA BLM; FERC Boundary, Recreation, Facilities: MID/TID. Data is CA SPCS, zone III, ft. Contour interval is 50 ft (NAVD 88).



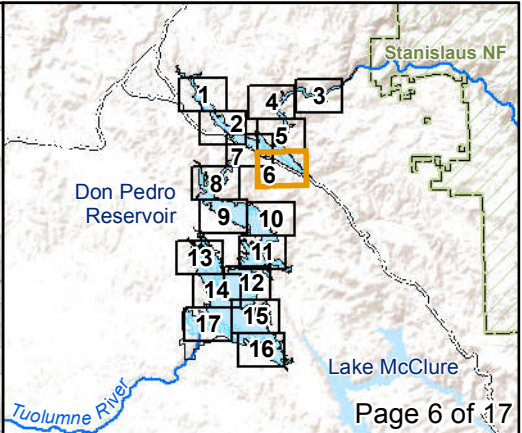
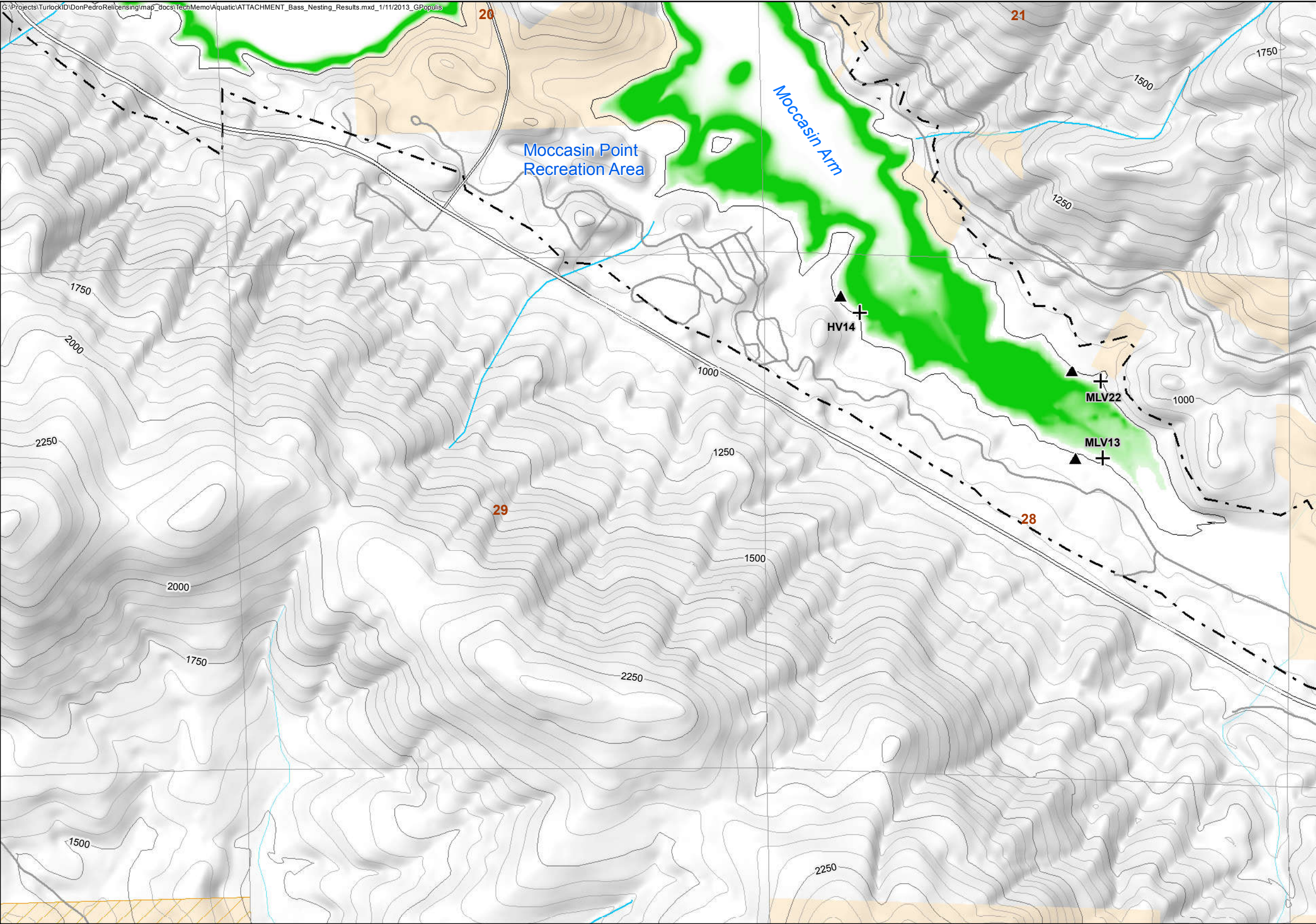
Survey Results and Transects
(Refer to Text For Label Codes)

- Observed Black Bass Nest Location
- ▲ Transect Boundary Ends
- ⊕ Transect Boundary Starts
- 55 River Miles to Confluence with San Joaquin River
- ▭ FERC Project Boundary (No. 2299)
- ▭ Current Shoreline (May 1, 2012)
- ▭ BLM Area of Critical Environmental Concern 'Red Hills'
- Federal Land Ownership**
- ▭ Bureau of Land Management

Bass Nesting Predicted Suitability



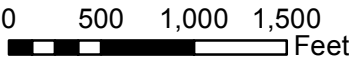
Map information was compiled from the best available sources. No warranty is made for its accuracy or completeness. Data Sources: Roads, Streams - ESRI; Ownership, PLSS - CA BLM; FERC Boundary, Recreation, Facilities: MID/TID. Data is CA SPCS, zone III, ft. Contour interval is 50 ft (NAVD 88).



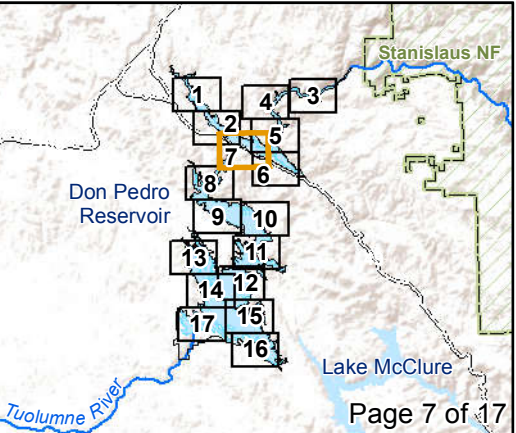
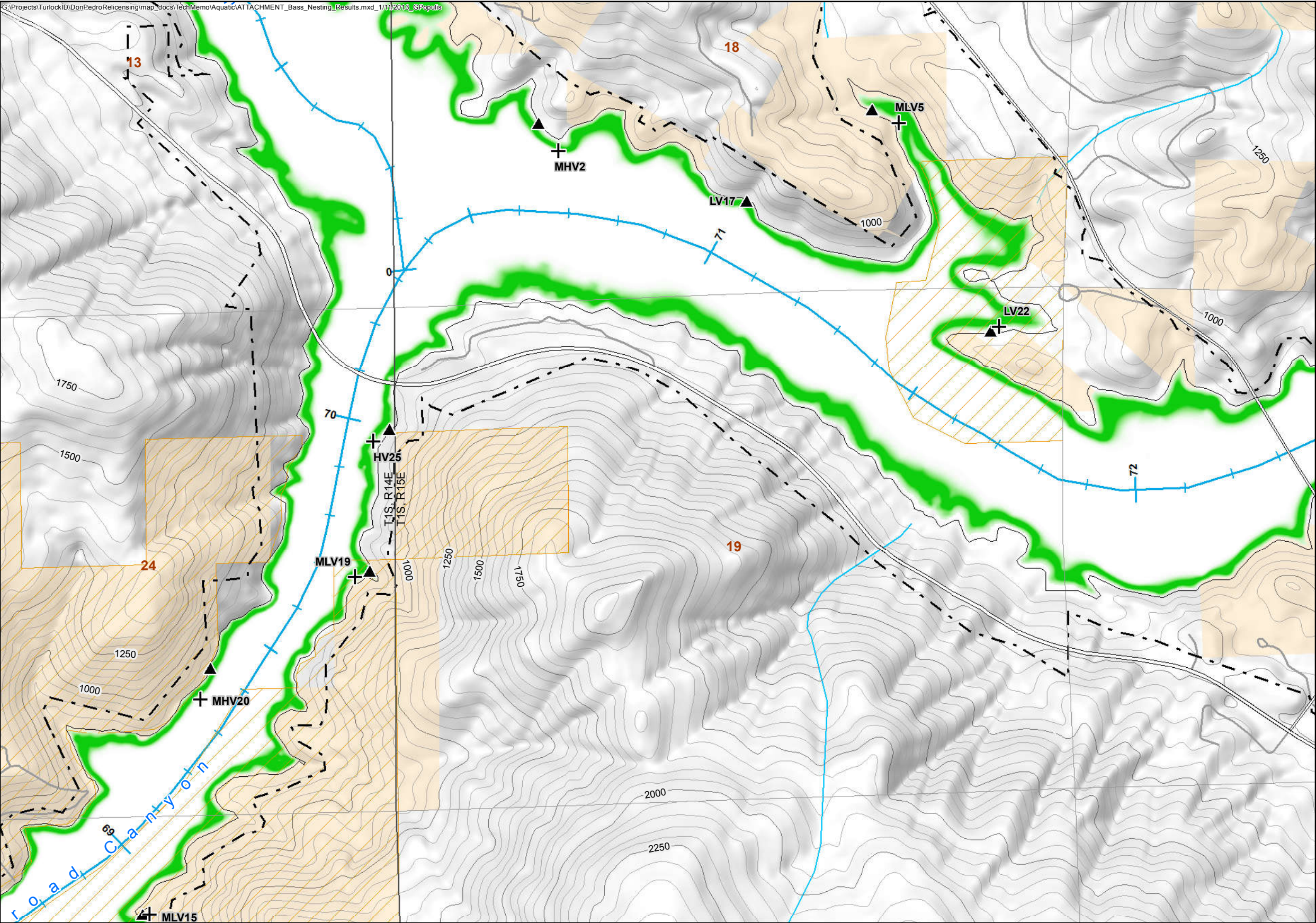
Survey Results and Transects
(Refer to Text For Label Codes)

- Observed Black Bass Nest Location
- ▲ Transect Boundary Ends
- ⊕ Transect Boundary Starts
- 55 River Miles to Confluence with San Joaquin River
- ⬜ FERC Project Boundary (No. 2299)
- ⬜ Current Shoreline (May 1, 2012)
- ⬜ BLM Area of Critical Environmental Concern 'Red Hills'
- Federal Land Ownership**
 - ⬜ Bureau of Land Management

Bass Nesting Predicted Suitability



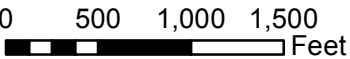
Map information was compiled from the best available sources. No warranty is made for its accuracy or completeness. Data Sources: Roads, Streams - ESRI; Ownership, PLSS - CA BLM; FERC Boundary, Recreation, Facilities: MID/TID. Data is CA SPCS, zone III, ft. Contour interval is 50 ft (NAVD 88).



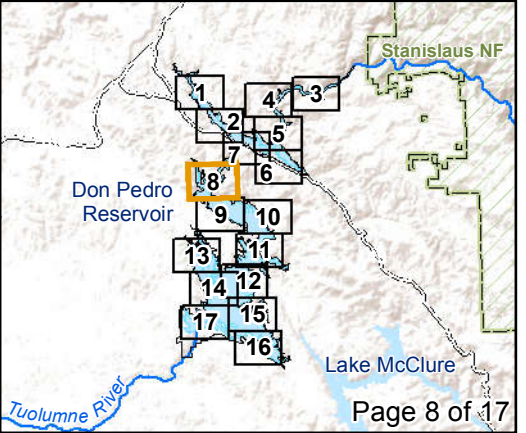
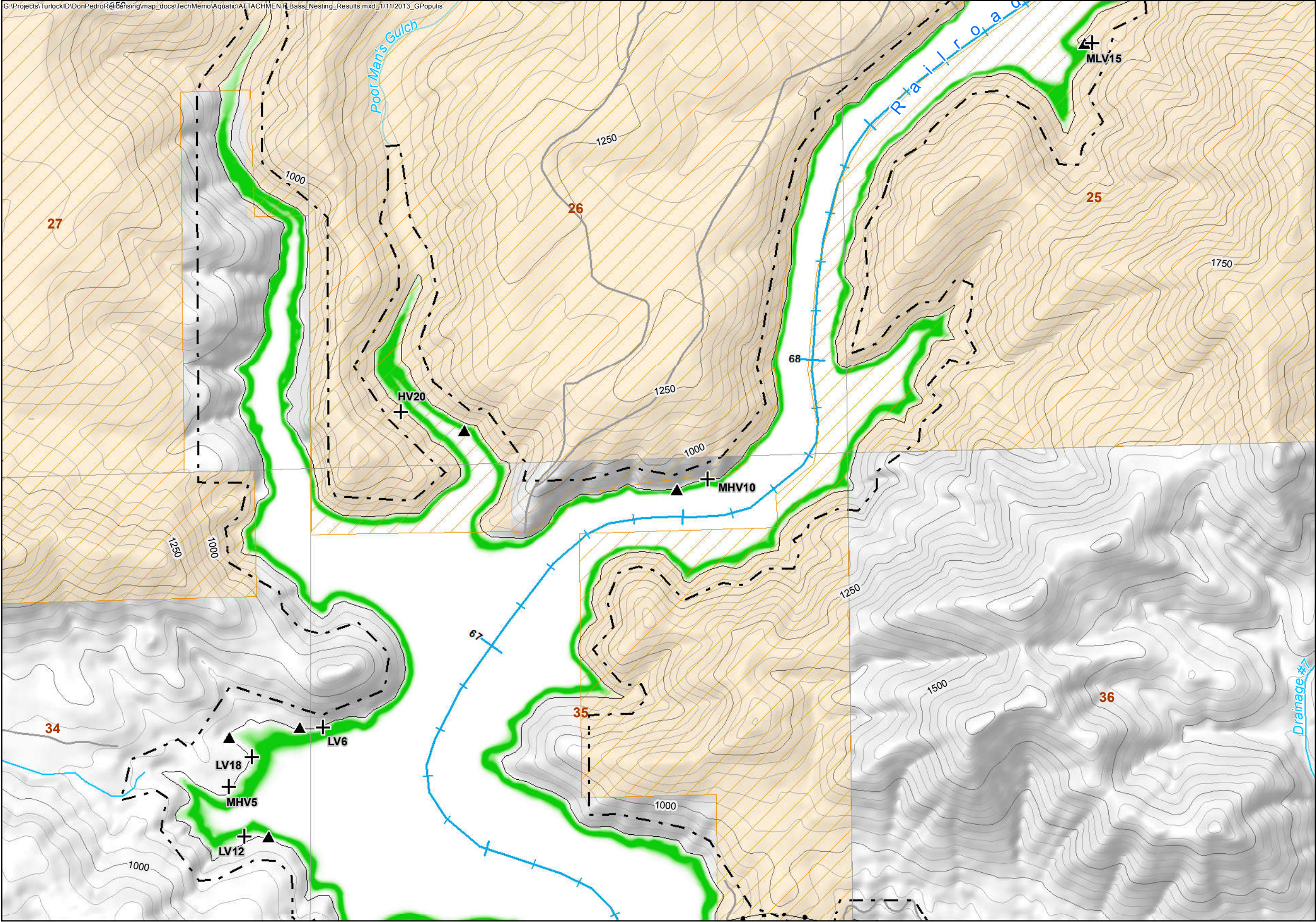
Survey Results and Transects
(Refer to Text For Label Codes)

- Observed Black Bass Nest Location
- ▲ Transect Boundary Ends
- + Transect Boundary Starts
- 55 River Miles to Confluence with San Joaquin River
- FERC Project Boundary (No. 2299)
- Current Shoreline (May 1, 2012)
- ▨ BLM Area of Critical Environmental Concern 'Red Hills'
- Federal Land Ownership**
 - Bureau of Land Management

Bass Nesting Predicted Suitability



Map information was compiled from the best available sources. No warranty is made for its accuracy or completeness. Data Sources: Roads, Streams - ESRI; Ownership, PLSS - CA BLM; FERC Boundary, Recreation, Facilities: MID/TID. Data is CA SPCS, zone III, ft. Contour interval is 50 ft (NAVD 88).



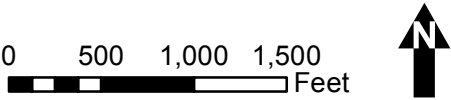
Survey Results and Transects

(Refer to Text For Label Codes)

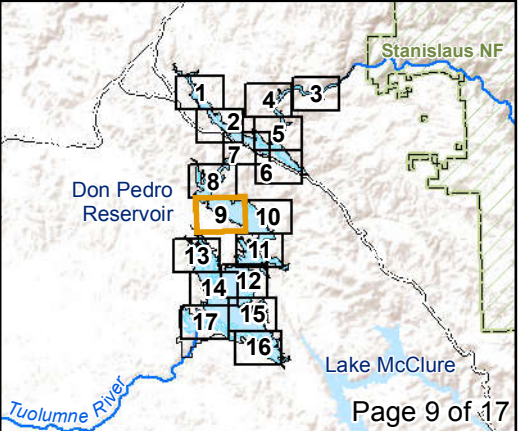
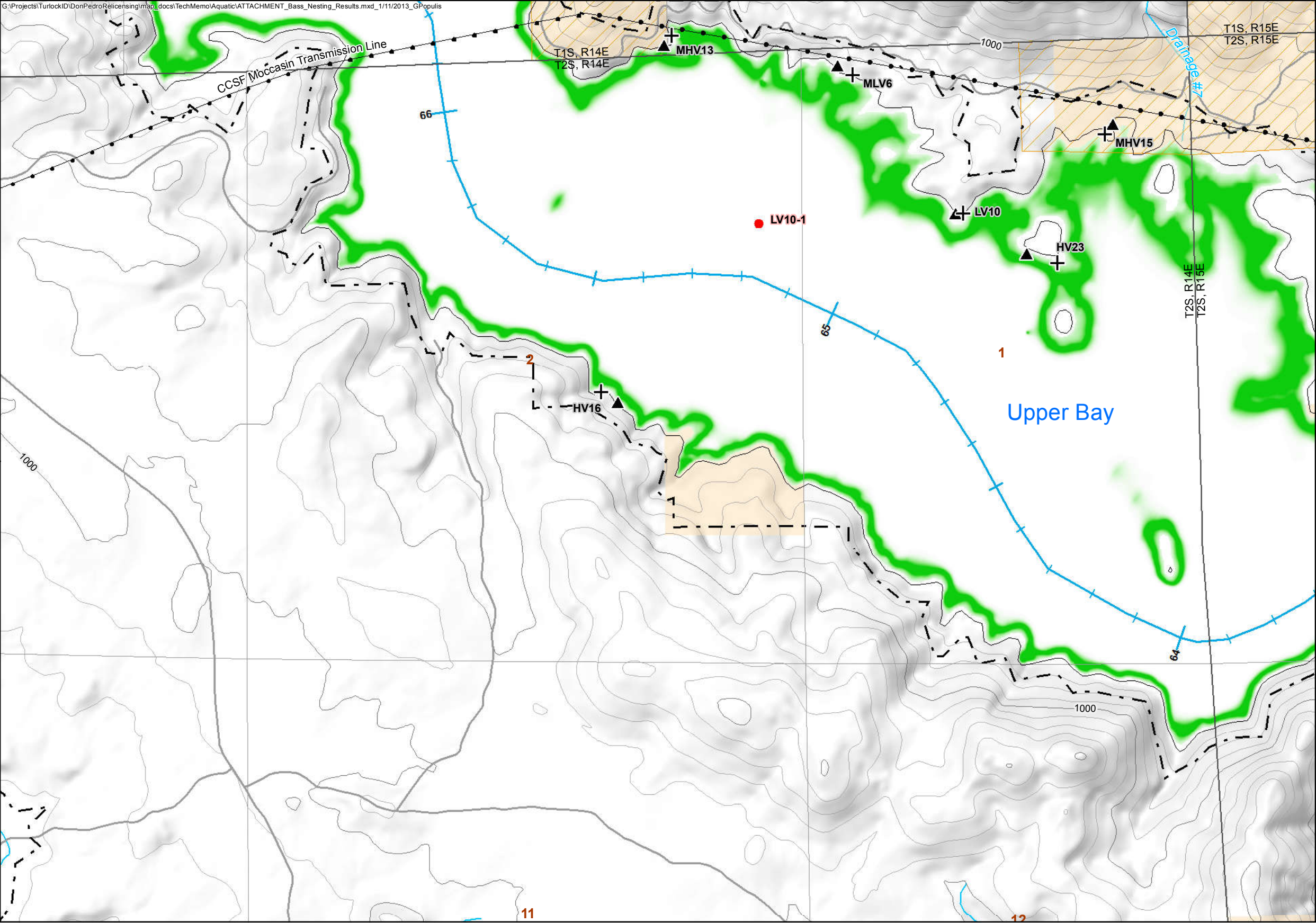
- Observed Black Bass Nest Location
- ▲ Transect Boundary Ends
- ⊕ Transect Boundary Starts
- 55 River Miles to Confluence with San Joaquin River
- ⌚ FERC Project Boundary (No. 2299)
- Current Shoreline (May 1, 2012)
- ▨ BLM Area of Critical Environmental Concern 'Red Hills'
- Federal Land Ownership**
 - Bureau of Land Management

Bass Nesting Predicted Suitability

Value
High
Low



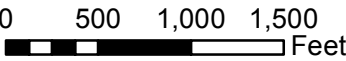
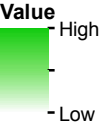
Map information was compiled from the best available sources. No warranty is made for its accuracy or completeness. Data Sources: Roads, Streams - ESRI; Ownership, PLSS - CA BLM; FERC Boundary, Recreation, Facilities: MID/TID. Data is CA SPCS, zone III, ft. Contour interval is 50 ft (NAVD 88).



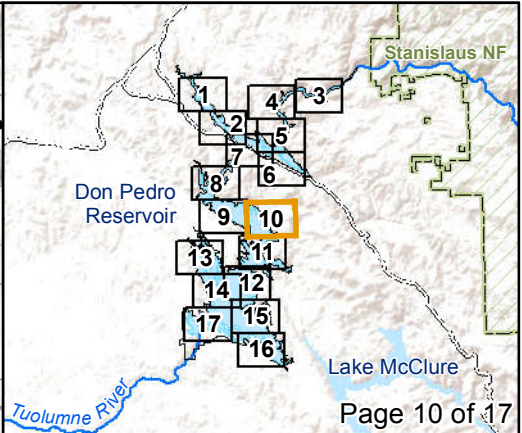
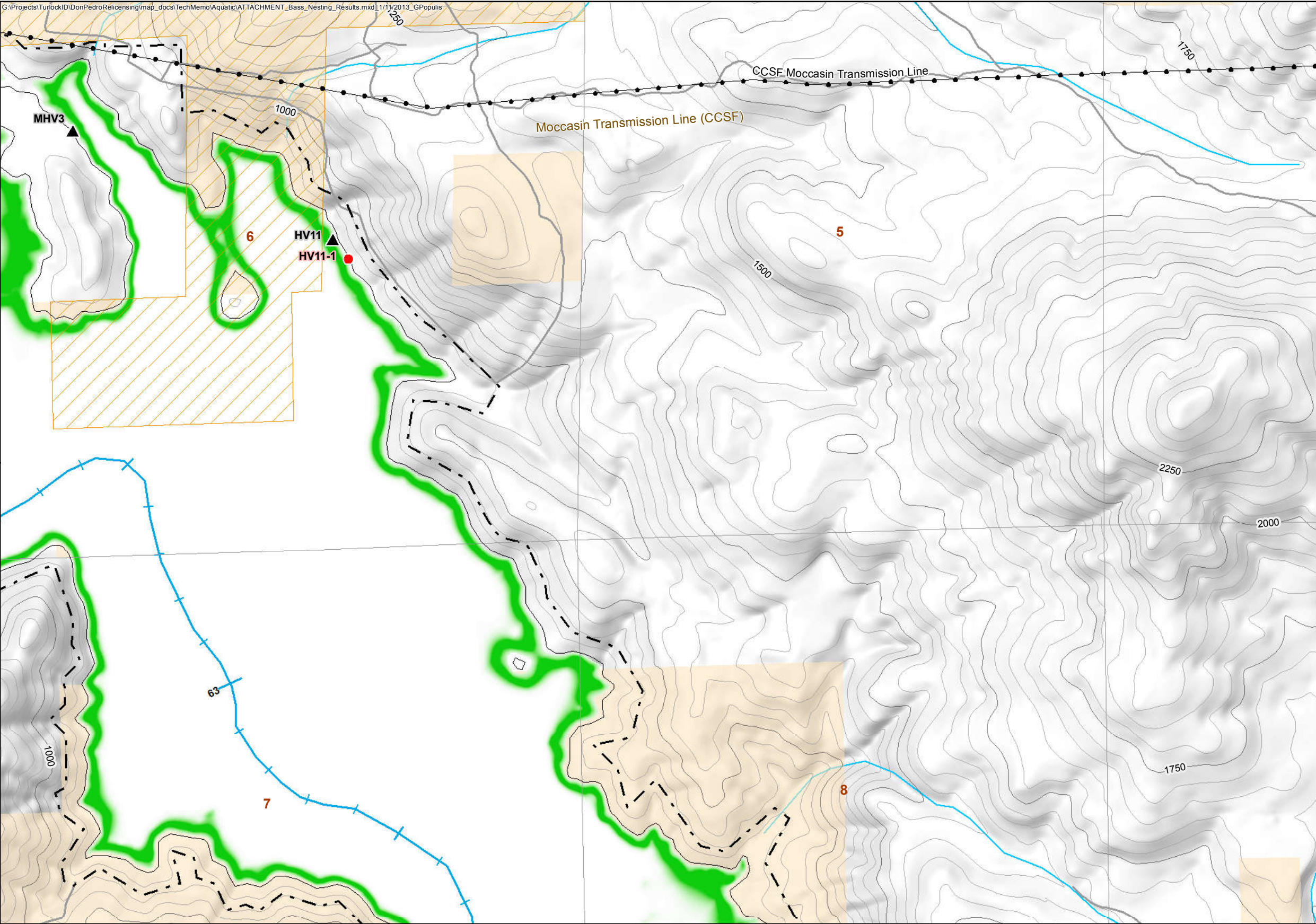
Survey Results and Transects
(Refer to Text For Label Codes)

- Observed Black Bass Nest Location
- ▲ Transect Boundary Ends
- ⊕ Transect Boundary Starts
- 55 River Miles to Confluence with San Joaquin River
- ⌚ FERC Project Boundary (No. 2299)
- Current Shoreline (May 1, 2012)
- ▨ BLM Area of Critical Environmental Concern 'Red Hills'
- Federal Land Ownership**
 - Bureau of Land Management

Bass Nesting Predicted Suitability



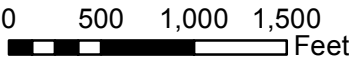
Map information was compiled from the best available sources. No warranty is made for its accuracy or completeness. Data Sources: Roads, Streams - ESRI; Ownership, PLSS - CA BLM; FERC Boundary, Recreation, Facilities: MID/TID. Data is CA SPCS, zone III, ft. Contour interval is 50 ft (NAVD 88).



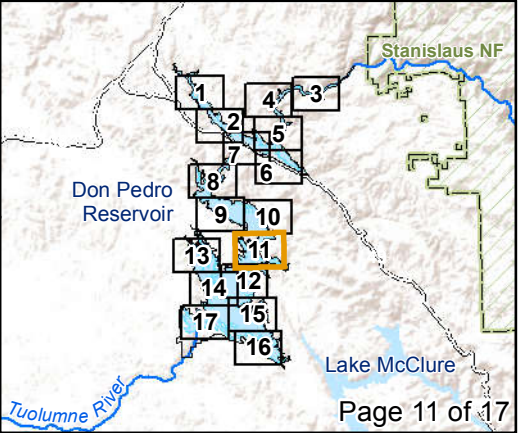
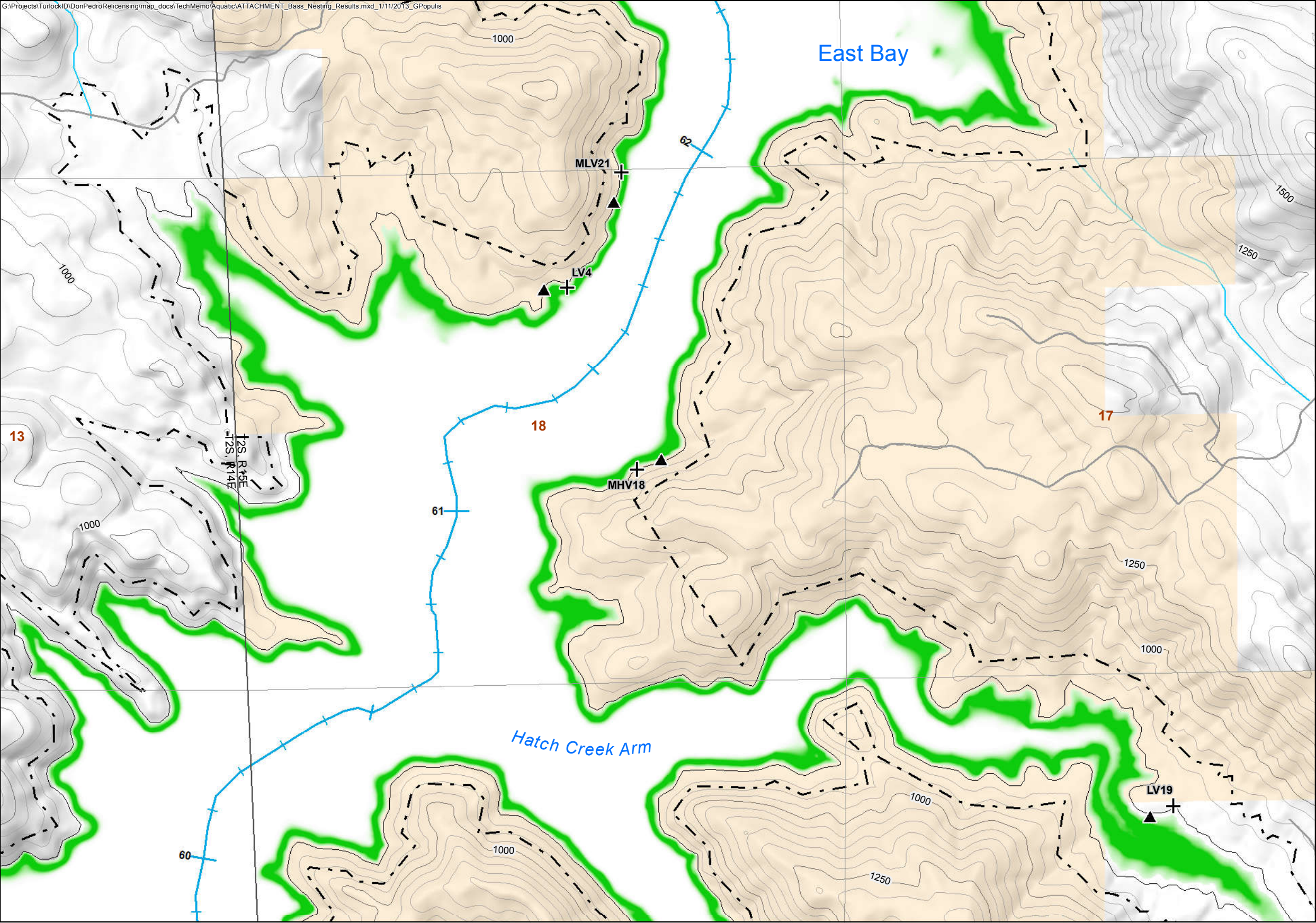
Survey Results and Transects
(Refer to Text For Label Codes)

- Observed Black Bass Nest Location
- ▲ Transect Boundary Ends
- ⊕ Transect Boundary Starts
- 55 River Miles to Confluence with San Joaquin River
- ⬜ FERC Project Boundary (No. 2299)
- ⬜ Current Shoreline (May 1, 2012)
- BLM Area of Critical Environmental Concern 'Red Hills'
- Federal Land Ownership**
- Bureau of Land Management

Bass Nesting Predicted Suitability



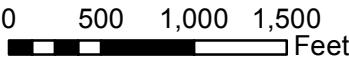
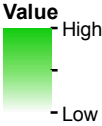
Map information was compiled from the best available sources. No warranty is made for its accuracy or completeness. Data Sources: Roads, Streams - ESRI; Ownership, PLSS - CA BLM; FERC Boundary, Recreation, Facilities: MID/TID. Data is CA SPCS, zone III, ft. Contour interval is 50 ft (NAVD 88).



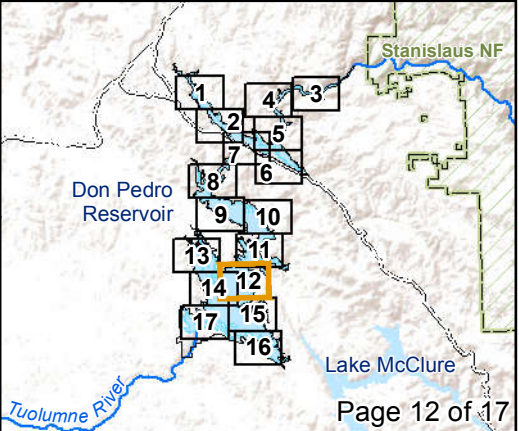
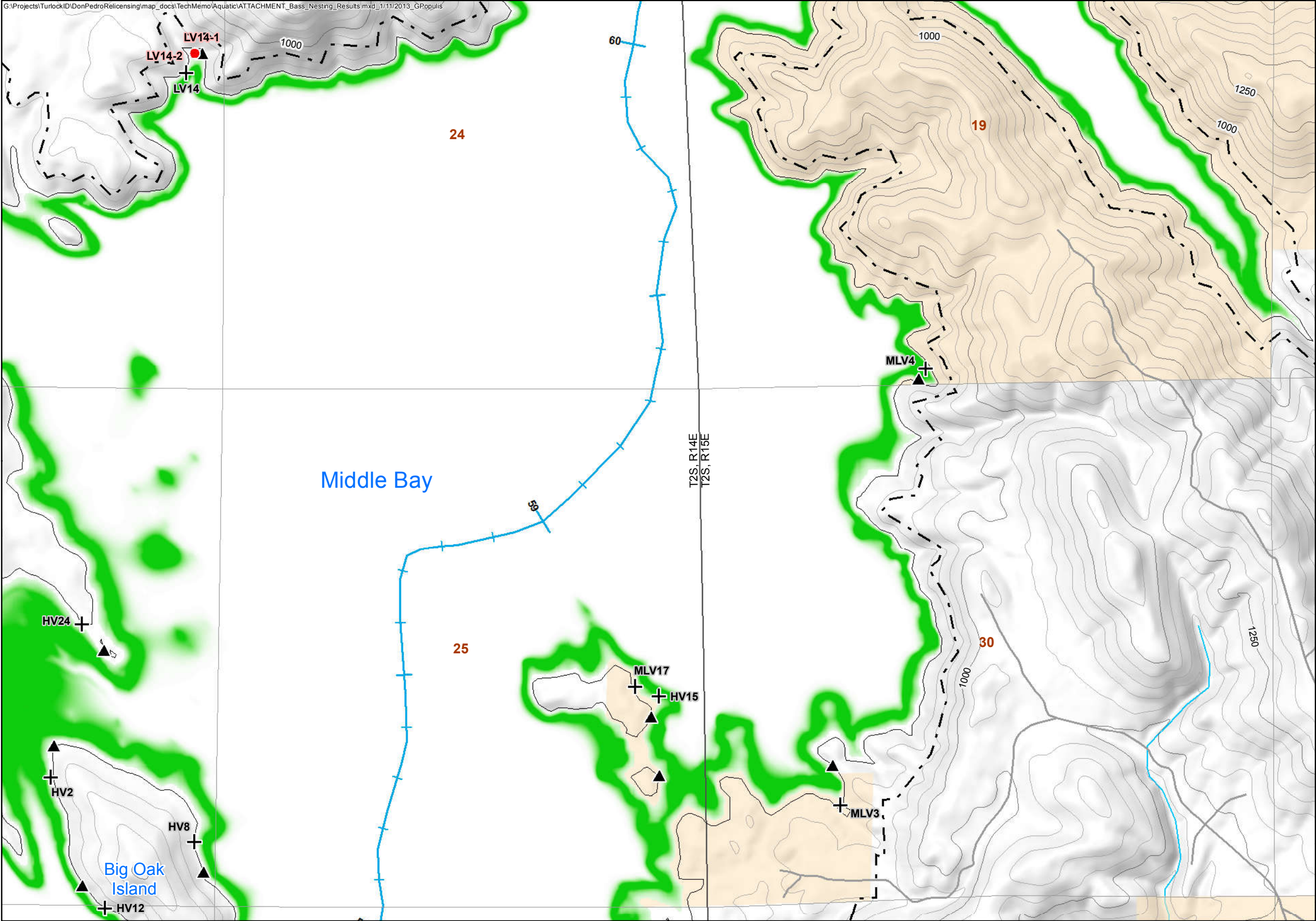
Survey Results and Transects
(Refer to Text For Label Codes)

- Observed Black Bass Nest Location
- ▲ Transect Boundary Ends
- ⊕ Transect Boundary Starts
- 55 River Miles to Confluence with San Joaquin River
- ⬜ FERC Project Boundary (No. 2299)
- ⬜ Current Shoreline (May 1, 2012)
- ⬜ BLM Area of Critical Environmental Concern 'Red Hills'
- Federal Land Ownership**
 - ⬜ Bureau of Land Management

Bass Nesting Predicted Suitability



Map information was compiled from the best available sources. No warranty is made for its accuracy or completeness. Data Sources: Roads, Streams - ESRI; Ownership, PLSS - CA BLM; FERC Boundary, Recreation, Facilities: MID/TID. Data is CA SPCS, zone III, ft. Contour interval is 50 ft (NAVD 88).



Survey Results and Transects

(Refer to Text For Label Codes)

- Observed Black Bass Nest Location
- ▲ Transect Boundary Ends
- ✚ Transect Boundary Starts
- 55 River Miles to Confluence with San Joaquin River
- ⬜ FERC Project Boundary (No. 2299)
- ⬜ Current Shoreline (May 1, 2012)
- ⬜ BLM Area of Critical Environmental Concern 'Red Hills'
- Federal Land Ownership**
 - ⬜ Bureau of Land Management

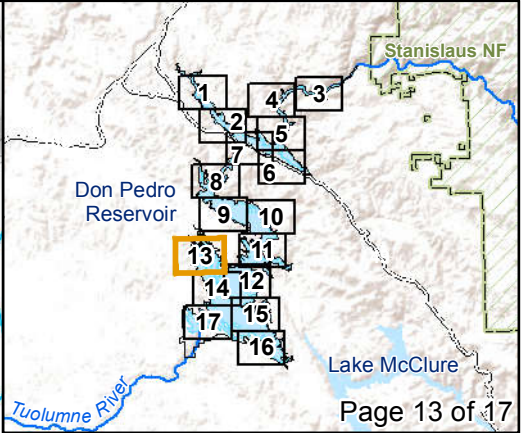
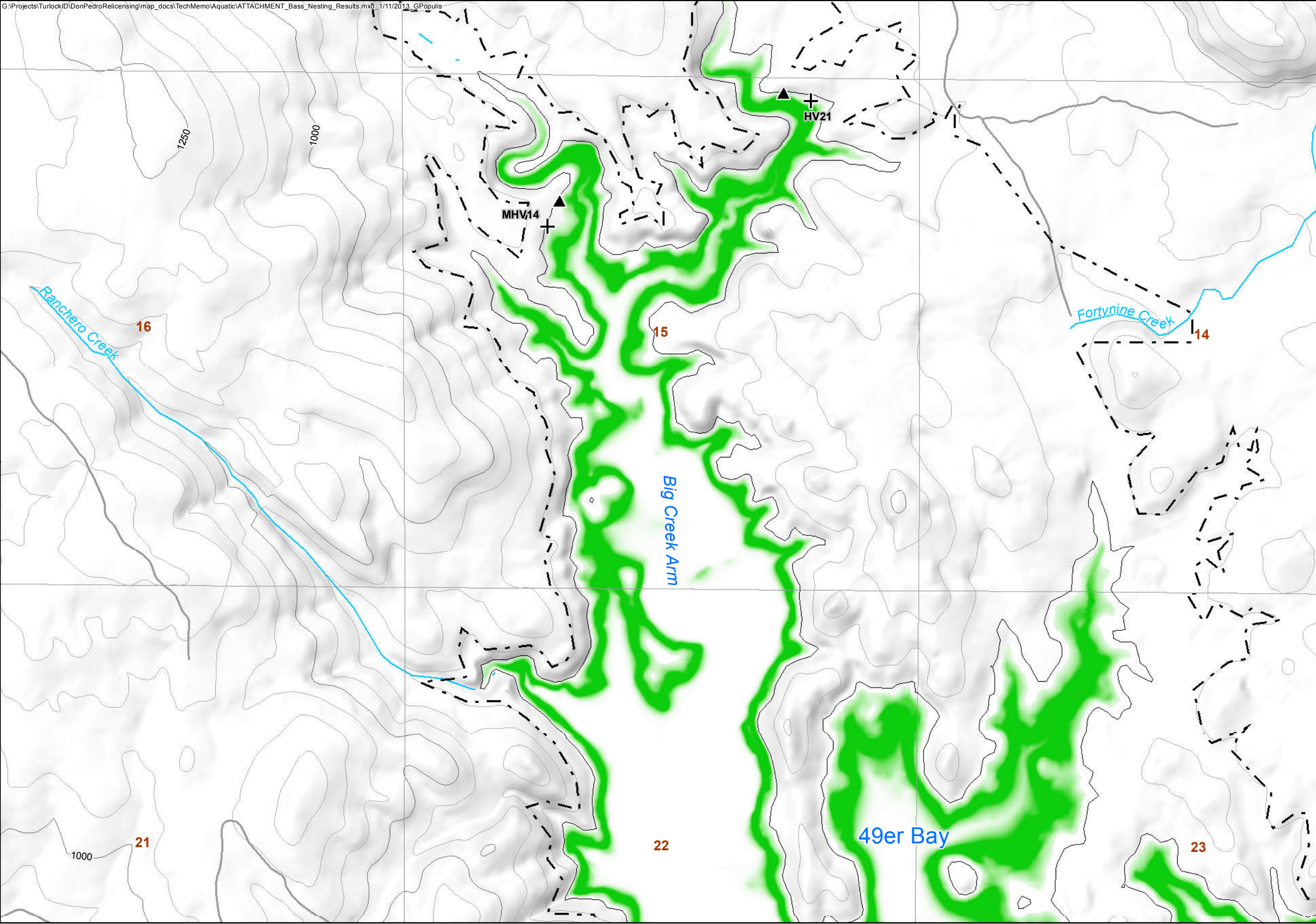
Bass Nesting Predicted Suitability

Value
High
Low

0 500 1,000 1,500 Feet

Map information was compiled from the best available sources. No warranty is made for its accuracy or completeness. Data Sources: Roads, Streams - ESRI; Ownership, PLSS - CA BLM; FERC Boundary, Recreation, Facilities: MID/TID. Data is CA SPCS, zone III, ft. Contour interval is 50 ft (NAVD 88).

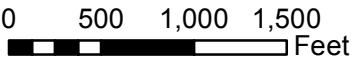
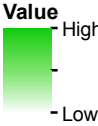
©2011 Modesto Irrigation District, Turlock Irrigation District



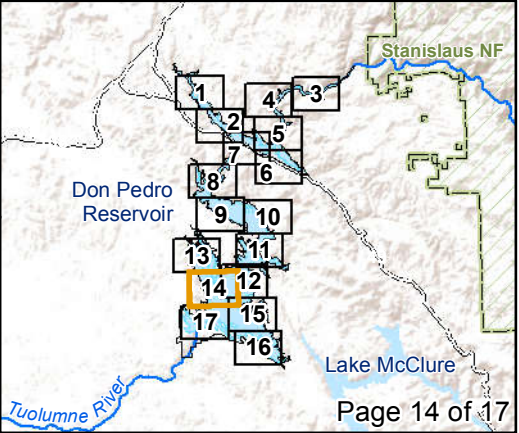
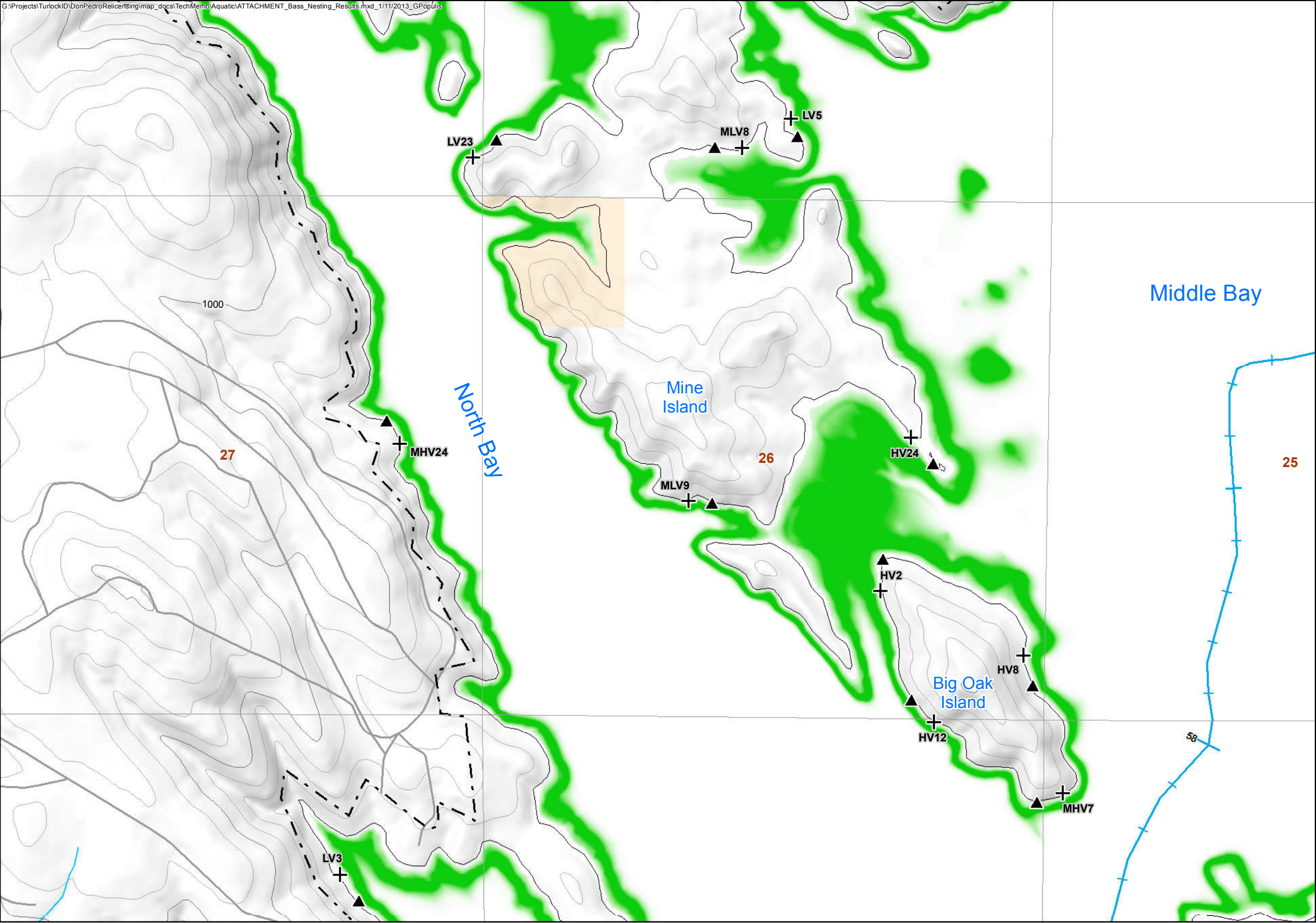
Survey Results and Transects
(Refer to Text For Label Codes)

- Observed Black Bass Nest Location
- ▲ Transect Boundary Ends
- ⊕ Transect Boundary Starts
- 55 River Miles to Confluence with San Joaquin River
- ⌚ FERC Project Boundary (No. 2299)
- Current Shoreline (May 1, 2012)
- ▨ BLM Area of Critical Environmental Concern 'Red Hills'
- Federal Land Ownership**
 - Bureau of Land Management

Bass Nesting Predicted Suitability



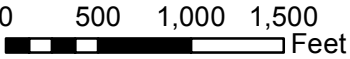
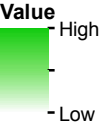
Map information was compiled from the best available sources. No warranty is made for its accuracy or completeness. Data Sources: Roads, Streams - ESRI; Ownership, PLSS - CA BLM; FERC Boundary, Recreation, Facilities: MID/TID. Data is CA SPCS, zone III, ft. Contour interval is 50 ft (NAVD 88).



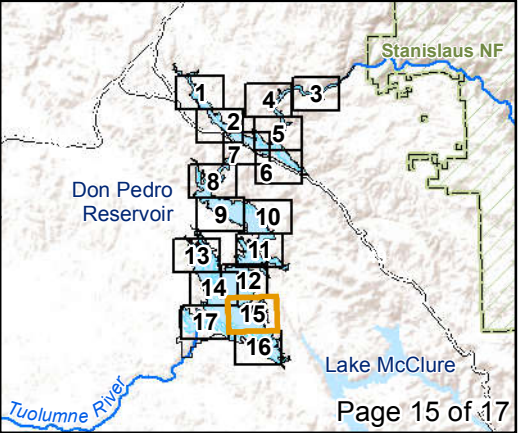
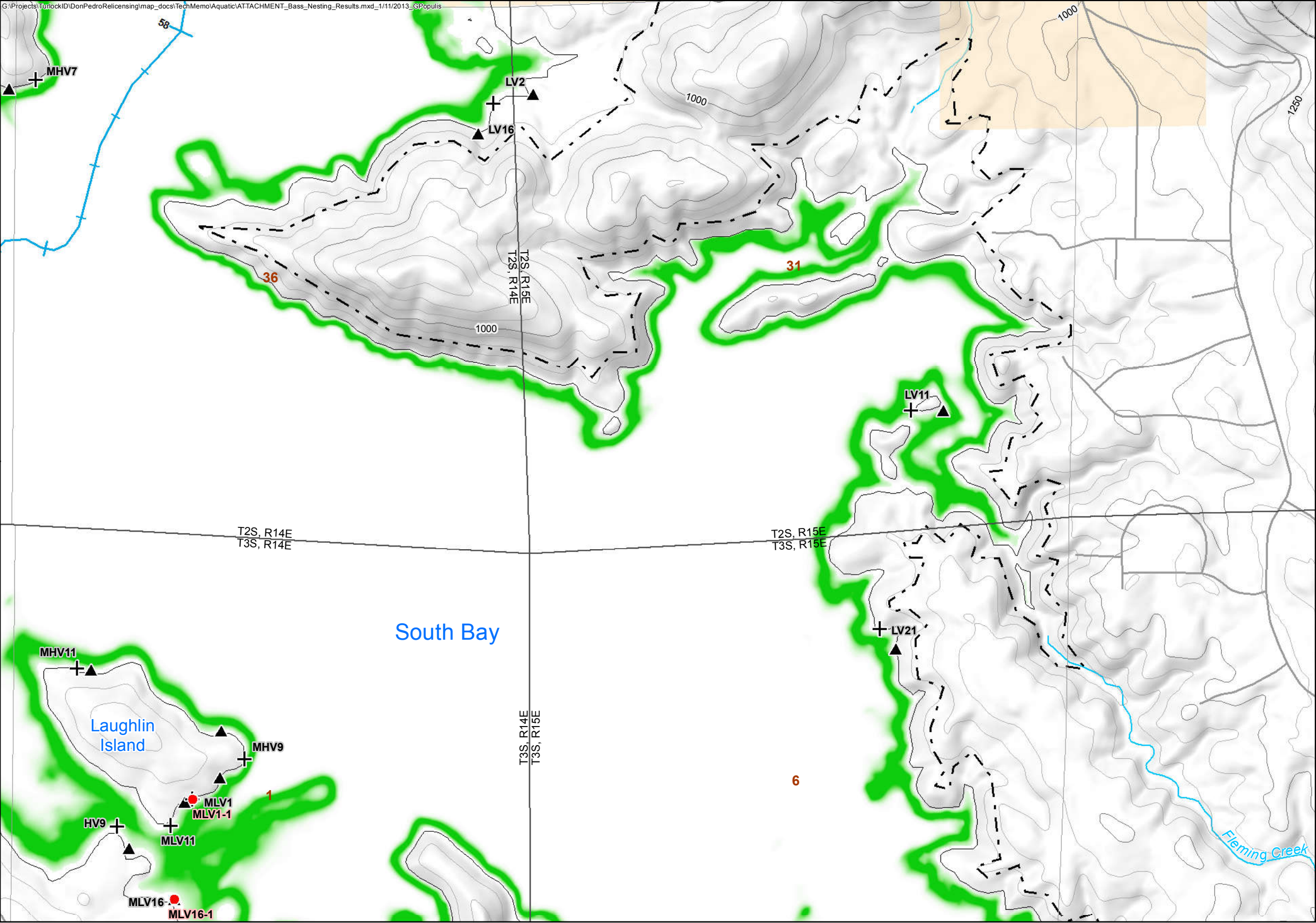
Survey Results and Transects
(Refer to Text For Label Codes)

- Observed Black Bass Nest Location
- ▲ Transect Boundary Ends
- ⊕ Transect Boundary Starts
- 55 River Miles to Confluence with San Joaquin River
- ⬜ FERC Project Boundary (No. 2299)
- ⬜ Current Shoreline (May 1, 2012)
- ⬜ BLM Area of Critical Environmental Concern 'Red Hills'
- Federal Land Ownership**
 - ⬜ Bureau of Land Management

Bass Nesting Predicted Suitability



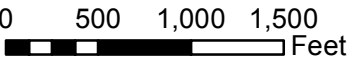
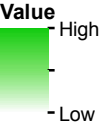
Map information was compiled from the best available sources. No warranty is made for its accuracy or completeness.
Data Sources: Roads, Streams - ESRI; Ownership, PLSS - CA BLM; FERC Boundary, Recreation, Facilities: MID/TID. Data is CA SPCS, zone III, ft. Contour interval is 50 ft (NAVD 88).



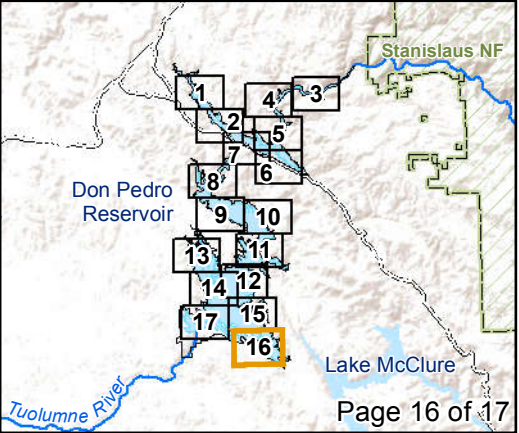
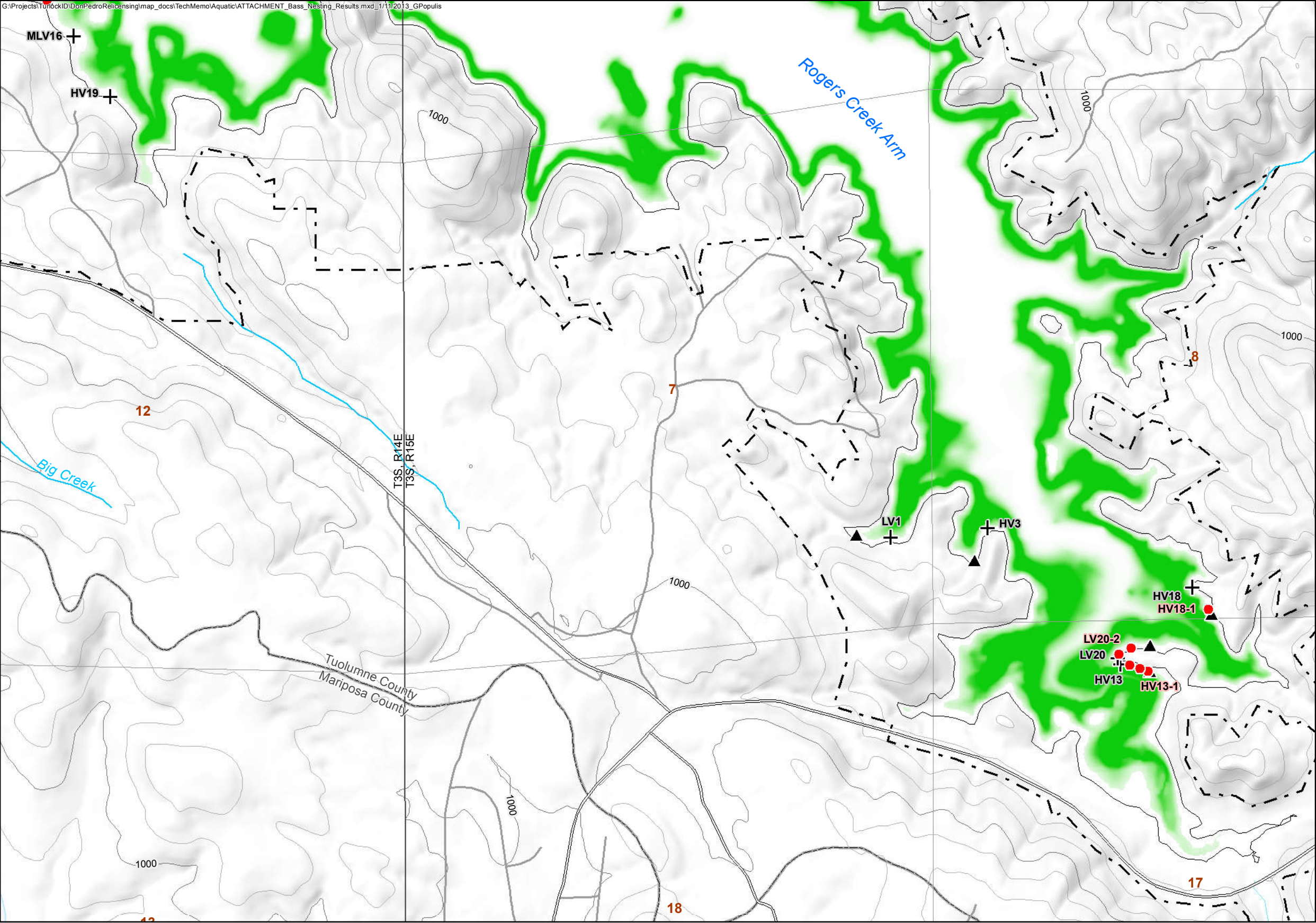
Survey Results and Transects
(Refer to Text For Label Codes)

- Observed Black Bass Nest Location
- ▲ Transect Boundary Ends
- + Transect Boundary Starts
- 55 River Miles to Confluence with San Joaquin River
- ▬ FERC Project Boundary (No. 2299)
- Current Shoreline (May 1, 2012)
- ▨ BLM Area of Critical Environmental Concern 'Red Hills'
- Federal Land Ownership**
 - Bureau of Land Management

Bass Nesting Predicted Suitability



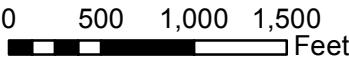
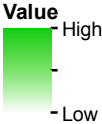
Map information was compiled from the best available sources. No warranty is made for its accuracy or completeness. Data Sources: Roads, Streams - ESRI; Ownership, PLSS - CA BLM; FERC Boundary, Recreation, Facilities: MID/TID. Data is CA SPCS, zone III, ft. Contour interval is 50 ft (NAVD 88).



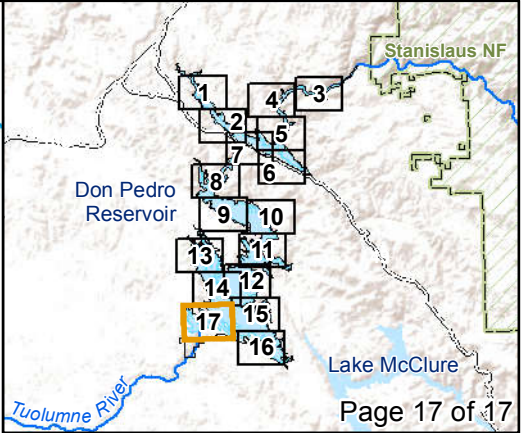
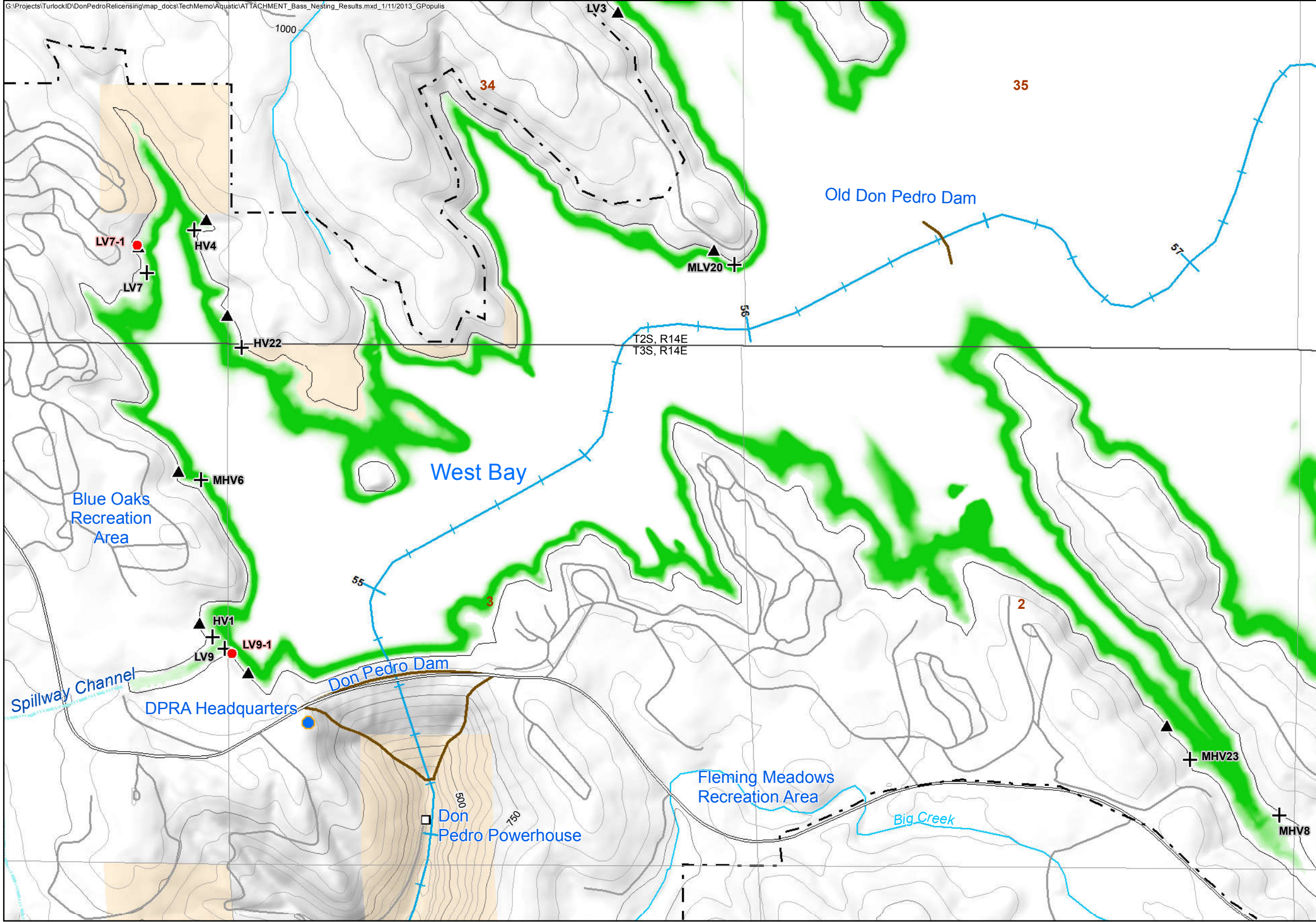
Survey Results and Transects
(Refer to Text For Label Codes)

- Observed Black Bass Nest Location
- ▲ Transect Boundary Ends
- ⊕ Transect Boundary Starts
- 55 River Miles to Confluence with San Joaquin River
- ⬜ FERC Project Boundary (No. 2299)
- ⬜ Current Shoreline (May 1, 2012)
- ⬜ BLM Area of Critical Environmental Concern 'Red Hills'
- Federal Land Ownership**
- ⬜ Bureau of Land Management

Bass Nesting Predicted Suitability



Map information was compiled from the best available sources. No warranty is made for its accuracy or completeness. Data Sources: Roads, Streams - ESRI; Ownership, PLSS - CA BLM; FERC Boundary, Recreation, Facilities: MID/TID. Data is CA SPCS, zone III, ft. Contour interval is 50 ft (NAVD 88).

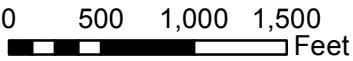


Survey Results and Transects

(Refer to Text For Label Codes)

- Observed Black Bass Nest Location
- ▲ Transect Boundary Ends
- ⊕ Transect Boundary Starts
- 55 River Miles to Confluence with San Joaquin River
- ⬜ FERC Project Boundary (No. 2299)
- ⬜ Current Shoreline (May 1, 2012)
- ⬜ BLM Area of Critical Environmental Concern 'Red Hills'
- Federal Land Ownership**
 - ⬜ Bureau of Land Management

Bass Nesting Predicted Suitability



Map information was compiled from the best available sources. No warranty is made for its accuracy or completeness. Data Sources: Roads, Streams - ESRI; Ownership, PLSS - CA BLM; FERC Boundary, Recreation, Facilities: MID/TID. Data is CA SPCS, zone III, ft. Contour interval is 50 ft (NAVD 88).

©2011 Modesto Irrigation District, Turlock Irrigation District