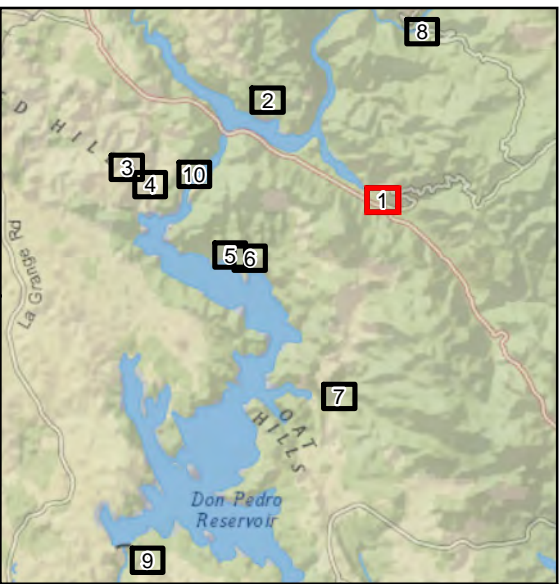
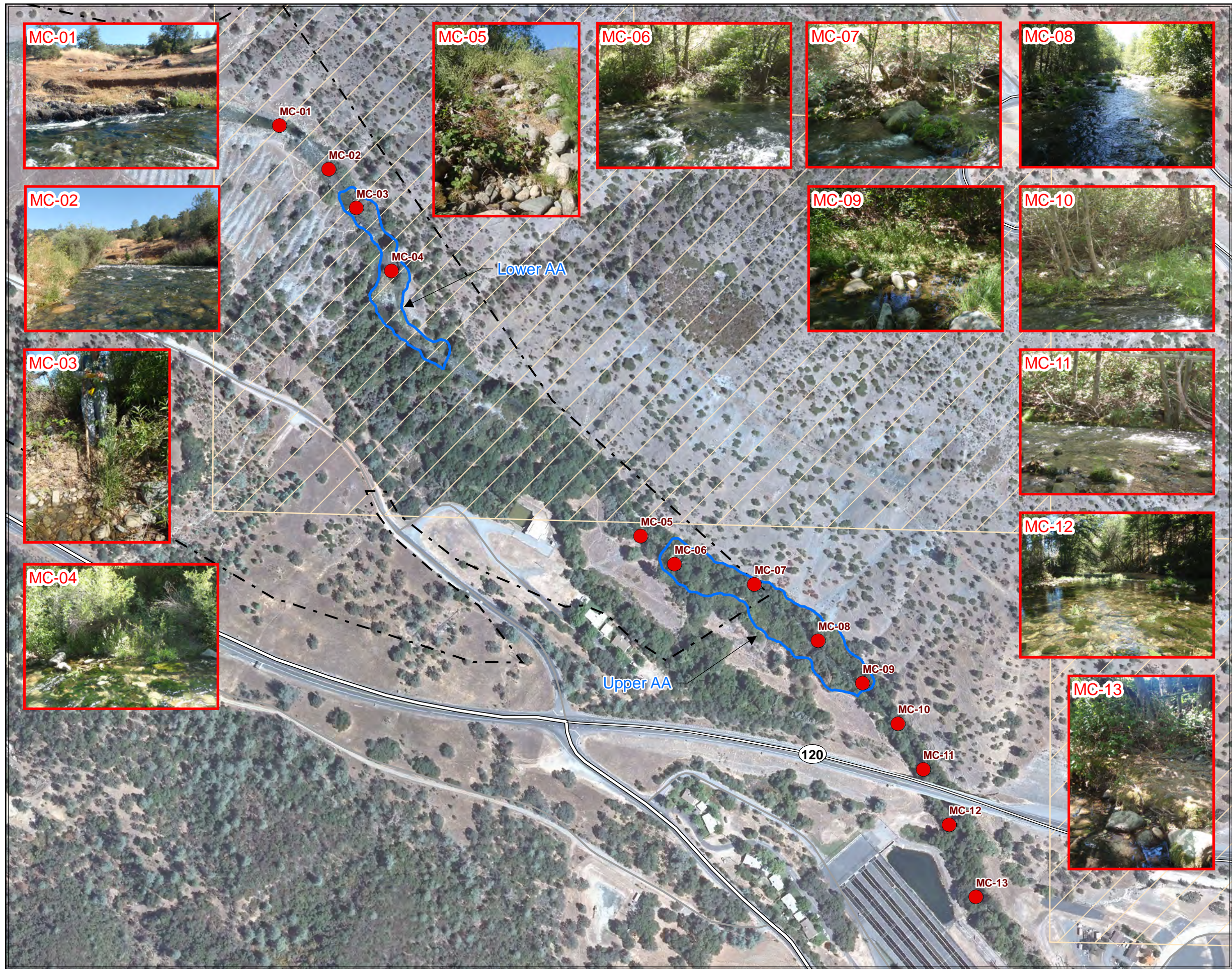


**STUDY REPORT TR-03
WETLAND HABITATS**

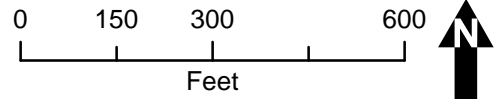
ATTACHMENT A

CRAM AAS AND VEGETATION TRANSECTS



Moccasin Creek

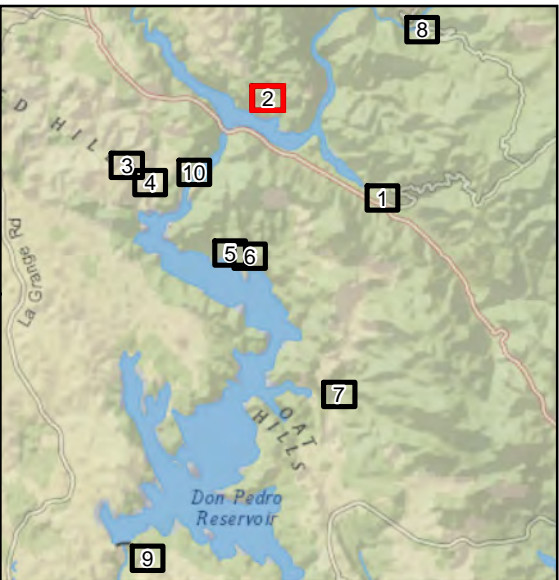
- Vegetation Belt Transect Location
- ✕ OHV Crossing
- CRAM Assessment Areas
- FERC Project Boundary (No. 2299)
- Dam
- == Highway
- == Major Road
- Minor Road
- BLM Area of Critical Environmental Concern 'Red Hills'
- Bureau of Land Management



Wetland Habitats Study

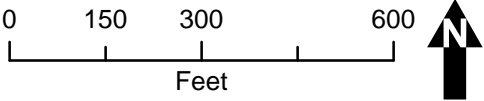
Don Pedro Project (FERC No.2299)

Map information was compiled from the best available sources. No Warranty is made for its accuracy or completeness.
Data Sources: Hydrography - USGS NHD; Roads - ESRI 9.3 Data (Teleatlas); Ownership, PLSS - CA BLM; FERC Boundary, Reservoir Bathy, Recreation & Project Facilities - MID/TID. Data is CA SPCS, zone III, ft.



Kanaka Creek

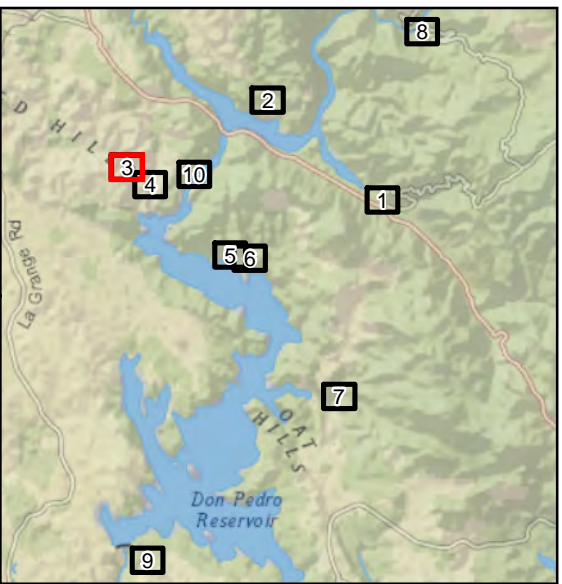
- Vegetation Belt Transect Location
- ✕ OHV Crossing
- ▭ CRAM Assessment Areas
- ┌─┐ FERC Project Boundary (No. 2299)
- Dam
- == Highway
- == Major Road
- Minor Road
- BLM Area of Critical Environmental Concern 'Red Hills'
- ▭ Bureau of Land Management



Wetland Habitats Study

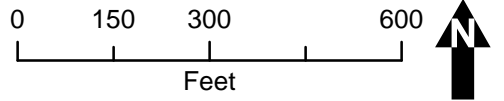
Don Pedro Project (FERC No.2299)

Map information was compiled from the best available sources. No Warranty is made for its accuracy or completeness.
Data Sources: Hydrography - USGS NHD; Roads - ESRI 9.3 Data (Teleatlas); Ownership, PLSS - CA BLM; FERC Boundary, Reservoir Bathy, Recreation & Project Facilities - MID/TID. Data is CA SPCS, zone III, ft.



Sixbit Gulch

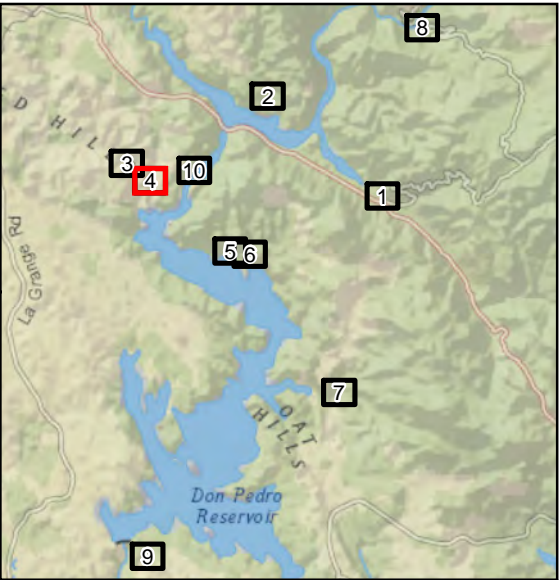
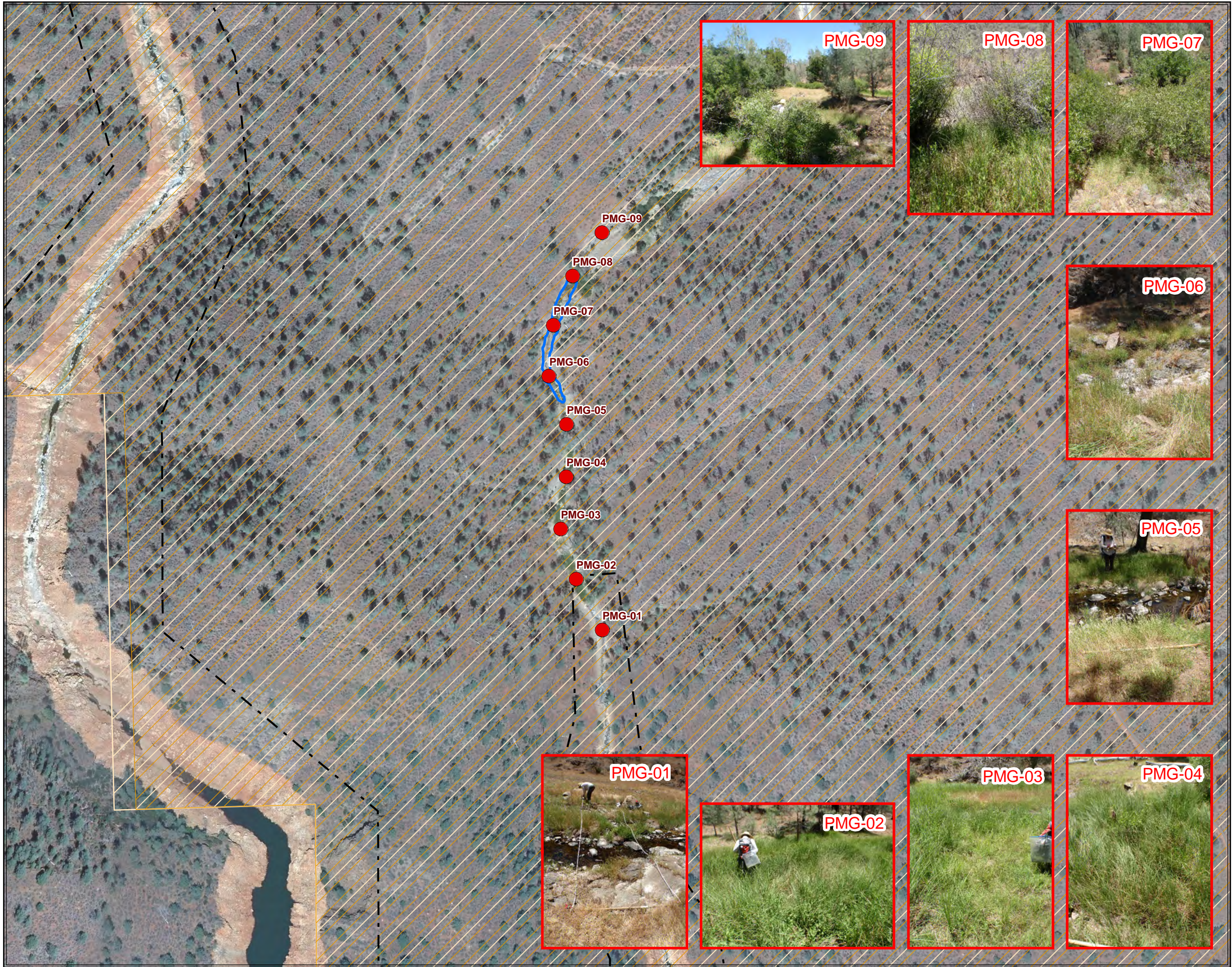
- Vegetation Belt Transect Location
- ✕ OHV Crossing
- ▭ CRAM Assessment Areas
- - - FERC Project Boundary (No. 2299)
- Dam
- == Highway
- == Major Road
- Minor Road
- BLM Area of Critical Environmental Concern 'Red Hills'
- ▭ Bureau of Land Management



Wetland Habitats Study

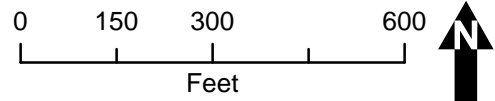
Don Pedro Project (FERC No.2299)

Map information was compiled from the best available sources. No Warranty is made for its accuracy or completeness.
Data Sources: Hydrography - USGS NHD; Roads - ESRI 9.3 Data (Teleatlas); Ownership, PLSS - CA BLM; FERC Boundary, Reservoir Bathymetry, Recreation & Project Facilities - MID/TID. Data is CA SPCS, zone III, ft.



Poor Man's Gulch

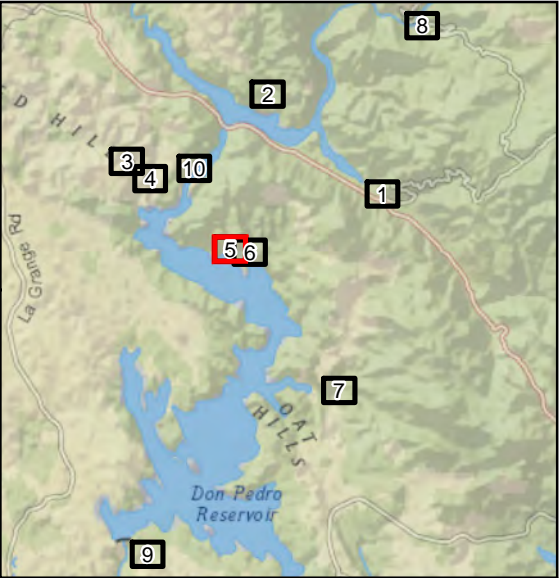
- Vegetation Belt Transect Location
- ✕ OHV Crossing
- ▭ CRAM Assessment Areas
- - - FERC Project Boundary (No. 2299)
- Dam
- == Highway
- == Major Road
- Minor Road
- ▨ BLM Area of Critical Environmental Concern 'Red Hills'
- ▭ Bureau of Land Management



Wetland Habitats Study

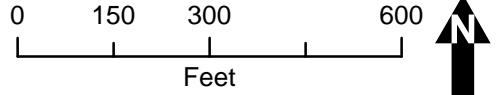
Don Pedro Project (FERC No.2299)

Map information was compiled from the best available sources. No Warranty is made for its accuracy or completeness. Data Sources: Hydrography - USGS NHD; Roads - ESRI 9.3 Data (Teleatlas); Ownership, PLSS - CA BLM; FERC Boundary, Reservoir Bathy, Recreation & Project Facilities - MID/TID. Data is CA SPCS, zone III, ft.



Drainage #7

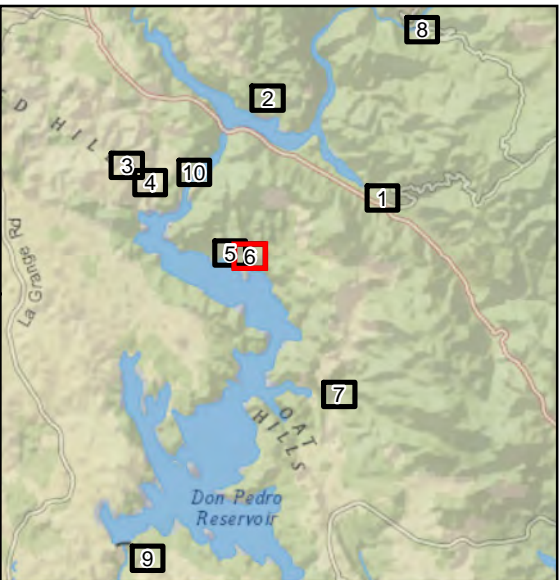
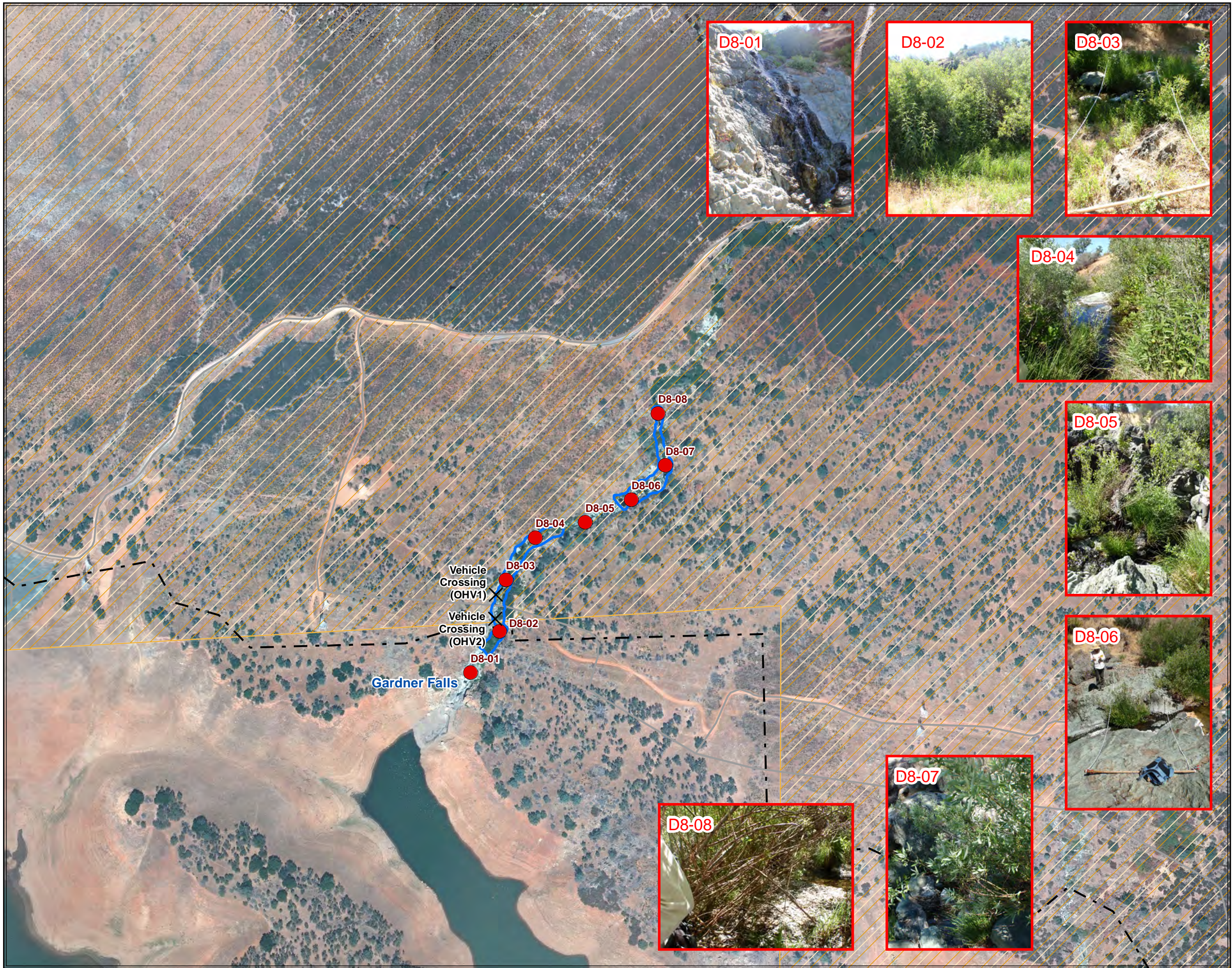
- Vegetation Belt Transect Location
- ✕ OHV Crossing
- ▭ CRAM Assessment Areas
- - - FERC Project Boundary (No. 2299)
- Dam
- == Highway
- == Major Road
- Minor Road
- ▨ BLM Area of Critical Environmental Concern 'Red Hills'
- ▭ Bureau of Land Management



Wetland Habitats Study

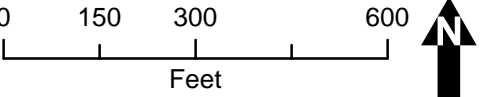
Don Pedro Project (FERC No.2299)

Map information was compiled from the best available sources. No Warranty is made for its accuracy or completeness.
Data Sources: Hydrography - USGS NHD; Roads - ESRI 9.3 Data (Teleatlas); Ownership, PLSS - CA BLM; FERC Boundary, Reservoir Bathymetry, Recreation & Project Facilities - MID/TID. Data is CA SPCS, zone III, ft.



Drainage #8

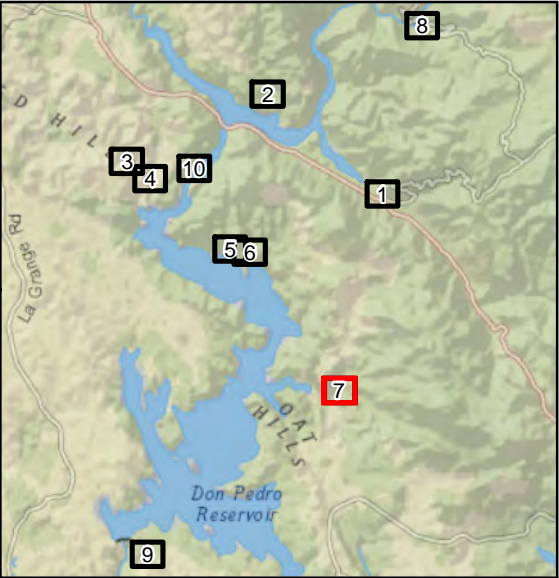
- Vegetation Belt Transect Location
- ✕ OHV Crossing
- ▭ CRAM Assessment Areas
- ▭ FERC Project Boundary (No. 2299)
- Dam
- Highway
- Major Road
- Minor Road
- ▨ BLM Area of Critical Environmental Concern 'Red Hills'
- ▭ Bureau of Land Management



Wetland Habitats Study

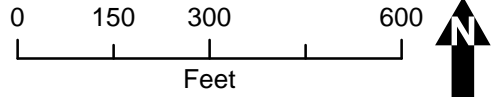
Don Pedro Project (FERC No.2299)

Map information was compiled from the best available sources. No Warranty is made for its accuracy or completeness.
Data Sources: Hydrography - USGS NHD; Roads - ESRI 9.3 Data (Teleatlas); Ownership, PLSS - CA BLM; FERC Boundary, Reservoir Bathymetry, Recreation & Project Facilities - MID/TID. Data is CA SPCS, zone III, ft.



Hatch Creek

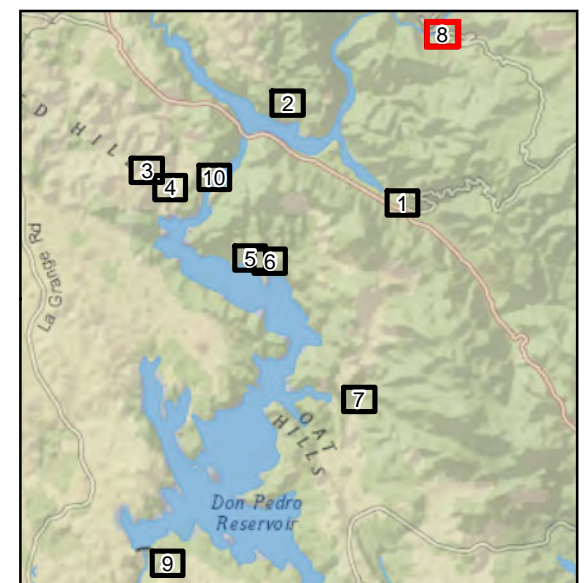
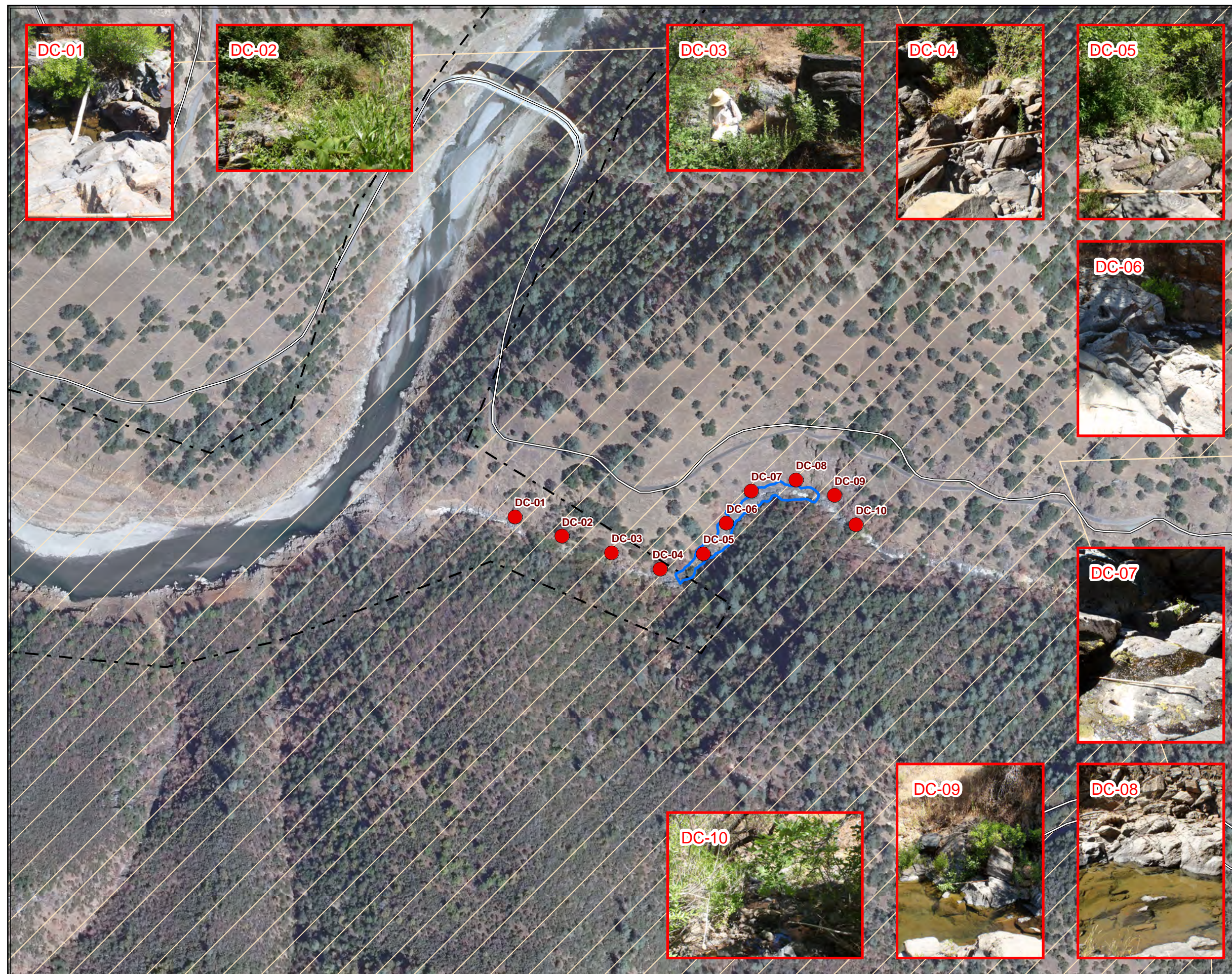
- Vegetation Belt Transect Location
- ✕ OHV Crossing
- ▭ CRAM Assessment Areas
- - - FERC Project Boundary (No. 2299)
- Dam
- == Highway
- == Major Road
- Minor Road
- BLM Area of Critical Environmental Concern 'Red Hills'
- ▭ Bureau of Land Management



Wetland Habitats Study




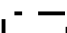






Don Pedro Project (FERC No.2299)

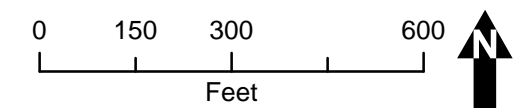
Map information was compiled from the best available sources. No Warranty is made for its accuracy or completeness.
Data Sources: Hydrography - USGS NHD; Roads - ESRI 9.3 Data (Teleatlas); Ownership, PLSS - CA BLM; FERC Boundary, Reservoir Bathymetry, Recreation & Project Facilities - MID/TID. Data is CA SPCS, zone III, ft.



Page 8 of 10

Deer Creek

-  Vegetation Belt Transect Location
-  OHV Crossing
-  CRAM Assessment Areas
-  FERC Project Boundary (No. 2299)
-  Dam
-  Highway
-  Major Road
-  Minor Road
-  BLM Area of Critical Environmental Concern
'Red Hills'
-  Bureau of Land Management

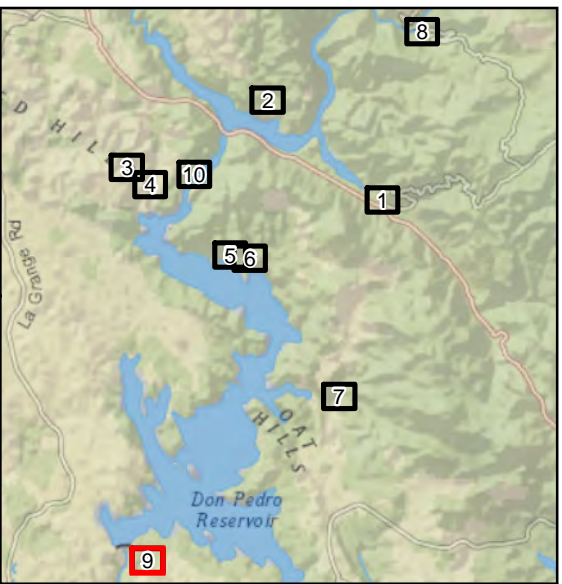
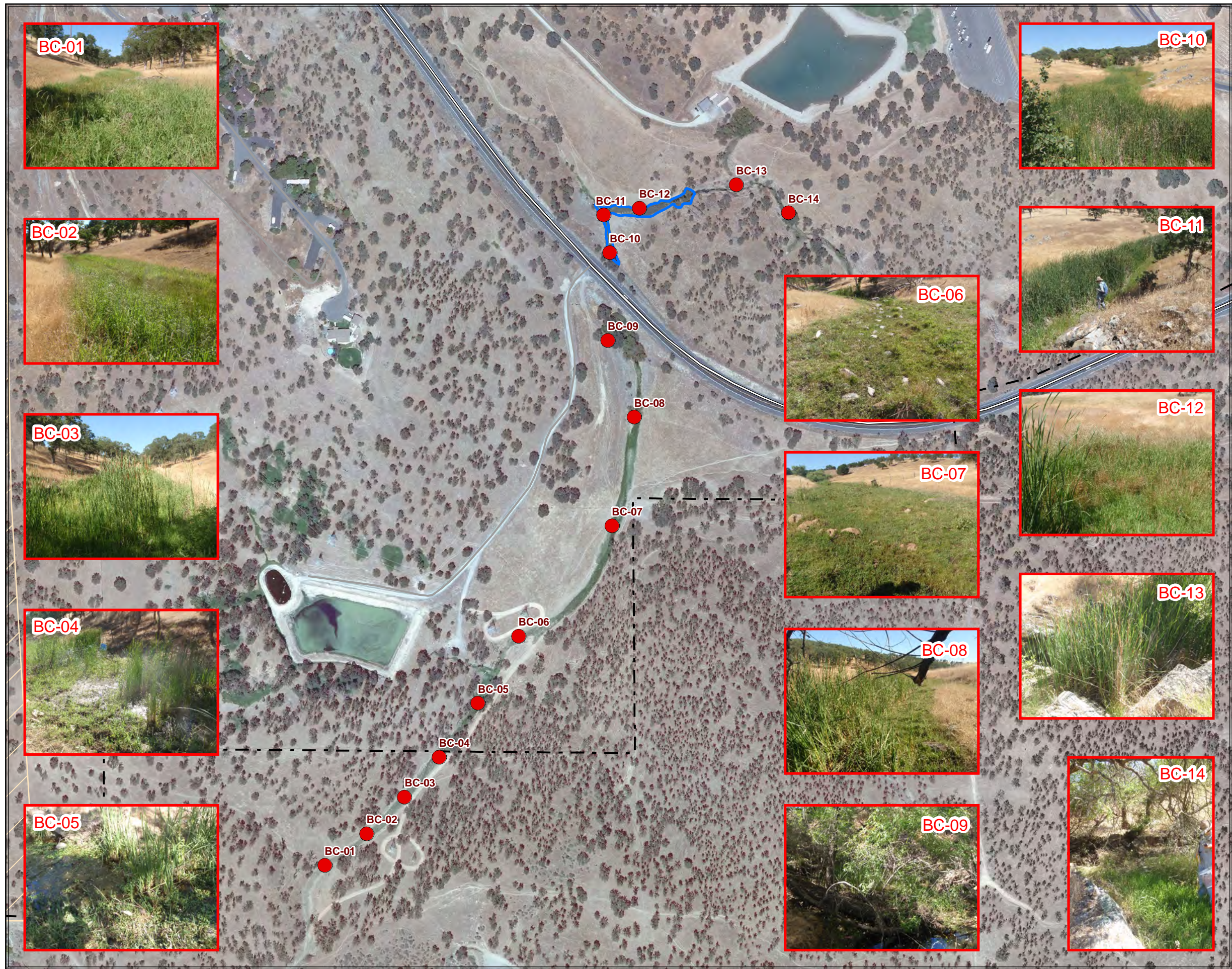


Wetland Habitats Study

Don Pedro Project (FERC No.2299)

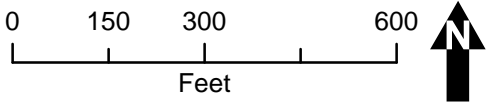
Map information was compiled from the best available sources. No Warranty is made for its accuracy or completeness.
Data Sources: Hydrography - USGS NHD; Roads - ESRI 9.3 Data (Teleatlas); Ownership, PLSS - CA BLM; FERC Boundary, Reservoir Bathymetry, Recreation & Project Facilities - MID/TID.
Data is CA SPCS, zone III, ft.

©2012 Modesto Irrigation District, Turlock Irrigation District



Big Creek

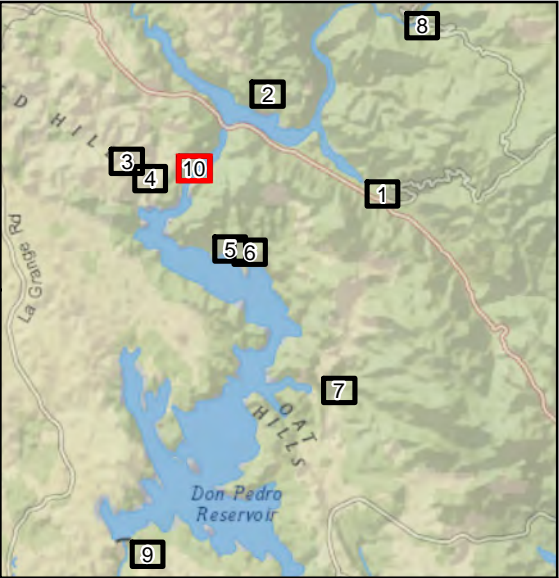
- Vegetation Belt Transect Location
- ✕ OHV Crossing
- ▭ CRAM Assessment Areas
- - - FERC Project Boundary (No. 2299)
- Dam
- == Highway
- == Major Road
- Minor Road
- BLM Area of Critical Environmental Concern 'Red Hills'
- Bureau of Land Management



Wetland Habitats Study

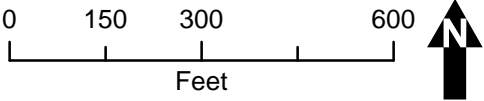
Don Pedro Project (FERC No.2299)

Map information was compiled from the best available sources. No Warranty is made for its accuracy or completeness.
Data Sources: Hydrography - USGS NHD; Roads - ESRI 9.3 Data (Teleatlas); Ownership, PLSS - CA BLM; FERC Boundary, Reservoir Bathymetry, Recreation & Project Facilities - MID/TID. Data is CA SPCS, zone III, ft.



Three Springs Creek

- Vegetation Belt Transect Location
- ✕ OHV Crossing
- ▭ CRAM Assessment Areas
- ┌─┐ FERC Project Boundary (No. 2299)
- Dam
- == Highway
- == Major Road
- Minor Road
- ▨ BLM Area of Critical Environmental Concern 'Red Hills'
- ▭ Bureau of Land Management



Wetland Habitats Study

Don Pedro Project (FERC No.2299)

Map information was compiled from the best available sources. No Warranty is made for its accuracy or completeness. Data Sources: Hydrography - USGS NHD; Roads - ESRI 9.3 Data (Teleatlas); Ownership, PLSS - CA BLM; FERC Boundary, Reservoir Bathy, Recreation & Project Facilities - MID/TID. Data is CA SPCS, zone III, ft.