

**STUDY REPORT TR-02
ESA- AND CESA- LISTED PLANTS**

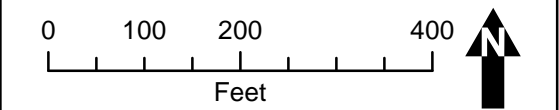
ATTACHMENT A

**ENDANGERED SPECIES ACT AND CALIFORNIA ENDANGERED
SPECIES ACT-LISTED PLANT OCCURRENCE FIGURES**



Page 1 of 5

- Layne's Ragwort
Packera layneae (PACLAY)
- California Vervain
Verbena californica (VERCAL)
- Botanical Study Area
- BLM Area of Critical Environmental Concern 'Red Hills'
- FERC Project Boundary (No. 2299)
- Highway
- Major Road
- Minor Road
- Water Body

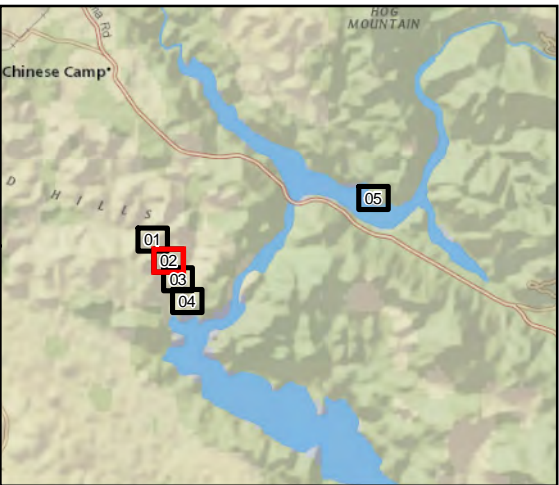


ESA and CESA Listed Plants

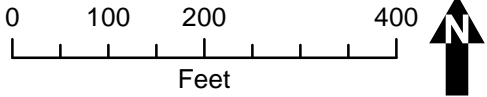
Don Pedro Project (FERC No.2299)

Map information was compiled from the best available sources. No Warranty is made for its accuracy or completeness.
Data Sources: Hydrography - USGS NHD; Roads - ESRI 9.3 Data (Teleatlas); Ownership, PLSS - CA BLM; FERC Boundary, Reservoir Bathy, Recreation & Project Facilities - MID/TID. Data is CA SPCS, zone III, ft. Contour interval is 50 ft (NAVD 88).

©2012 Modesto Irrigation District, Turlock Irrigation District



- Layne's Ragwort
Packera layneae (PACLAY)
- California Vervain
Verbena californica (VERCAL)
- Botanical Study Area
- BLM Area of Critical Environmental Concern 'Red Hills'
- - - FERC Project Boundary (No. 2299)
- == Highway
- == Major Road
- Minor Road
- Water Body



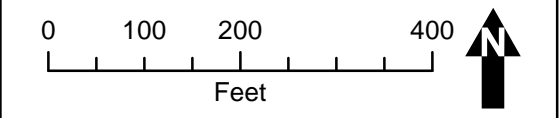
ESA and CESA Listed Plants

Don Pedro Project (FERC No.2299)

Map information was compiled from the best available sources. No Warranty is made for its accuracy or completeness.
Data Sources: Hydrography - USGS NHD; Roads - ESRI 9.3 Data (Teleatlas); Ownership, PLSS - CA BLM; FERC Boundary, Reservoir Bathymetry, Recreation & Project Facilities - MID/TID. Data is CA SPCS, zone III, ft. Contour interval is 50 ft (NAVD 88).



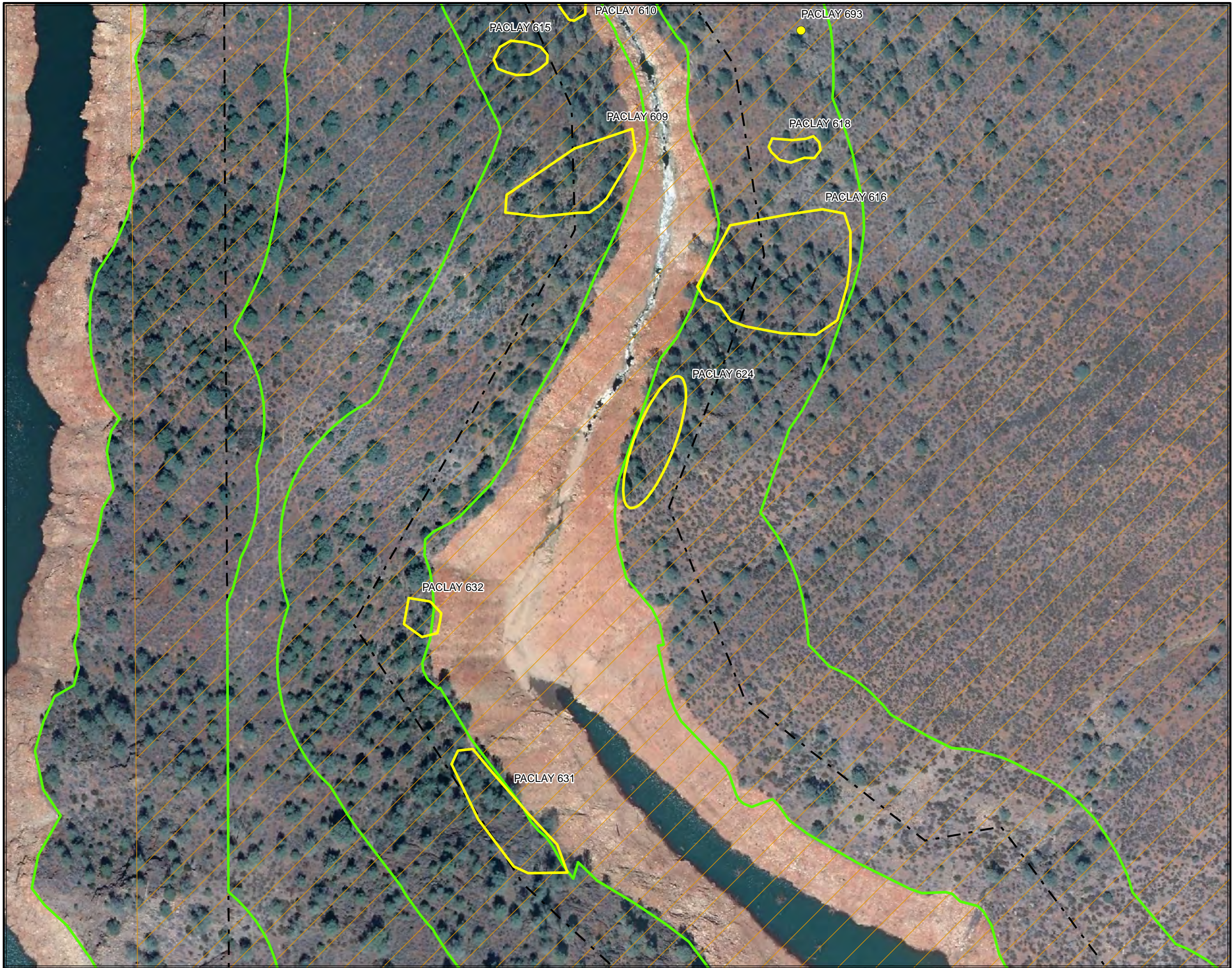
- Layne's Ragwort
Packera layneae (PACLAY)
- California Vervain
Verbena californica (VERCAL)
- Botanical Study Area
- BLM Area of Critical Environmental Concern 'Red Hills'
- FERC Project Boundary (No. 2299)
- Highway
- Major Road
- Minor Road
- Water Body



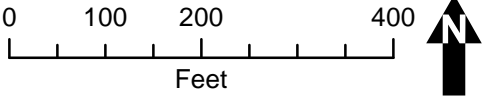
ESA and CESA Listed Plants

Don Pedro Project (FERC No.2299)

Map information was compiled from the best available sources. No Warranty is made for its accuracy or completeness. Data Sources: Hydrography - USGS NHD; Roads - ESRI 9.3 Data (Teleatlas); Ownership, PLSS - CA BLM; FERC Boundary, Reservoir Bathy, Recreation & Project Facilities - MID/TID. Data is CA SPCS, zone III, ft. Contour interval is 50 ft (NAVD 88).



- Layne's Ragwort
Packera layneae (PACLAY)
- California Vervain
Verbena californica (VERCAL)
- Botanical Study Area
- BLM Area of Critical Environmental Concern 'Red Hills'
- FERC Project Boundary (No. 2299)
- Highway
- Major Road
- Minor Road
- Water Body



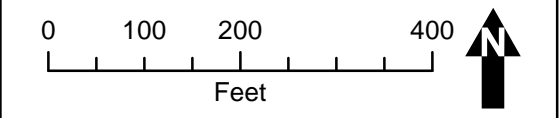
ESA and CESA Listed Plants

Don Pedro Project (FERC No.2299)

Map information was compiled from the best available sources. No Warranty is made for its accuracy or completeness.
Data Sources: Hydrography - USGS NHD; Roads - ESRI 9.3 Data (Teleatlas); Ownership, PLSS - CA BLM; FERC Boundary, Reservoir Bathy, Recreation & Project Facilities - MID/TID. Data is CA SPCS, zone III, ft. Contour interval is 50 ft (NAVD 88).



- Layne's Ragwort
Packera layneae (PACLAY)
- California Vervain
Verbena californica (VERCAL)
- Botanical Study Area
- BLM Area of Critical Environmental Concern 'Red Hills'
- FERC Project Boundary (No. 2299)
- Highway
- Major Road
- Minor Road
- Water Body



ESA and CESA Listed Plants

Don Pedro Project (FERC No.2299)

Map information was compiled from the best available sources. No Warranty is made for its accuracy or completeness.
Data Sources: Hydrography - USGS NHD; Roads - ESRI 9.3 Data (Teleatlas); Ownership, PLSS - CA BLM; FERC Boundary, Reservoir Bathy, Recreation & Project Facilities - MID/TID. Data is CA SPCS, zone III, ft. Contour interval is 50 ft (NAVD 88).