

**STUDY REPORT RR-04
VISUAL QUALITY**

ATTACHMENT A

**VISUAL QUALITY MAP WITH KEY OBSERVATION POINT (KOP),
PHOTO POINT (PP), AND SUPPLEMENTAL PHOTO POINT (SPP)
LOCATIONS AND BLM VISUAL RESOURCE OBJECTIVES**

TABLE OF CONTENTS

Section No.	Description	Page No.
1.0	GUIDE TO READING MAPS	1

List of Figures		
Figure No.	Description	Page No.
Figure 1.	Overview Map.	2
Figure 2.	Pedro Dam and Spillway, Blue Oaks and Fleming Meadows Recreation Areas.	3
Figure 3.	Rogers Creek Arm of Reservoir and State Highway 132. No KOP, PP, or SPP locations on this map.....	4
Figure 4.	Don Pedro Dam and Spillway, Blue Oaks and Fleming Meadows Recreation Areas, and North Bay.	5
Figure 5.	Middle Bay view from private residence area.	6
Figure 6.	49er Bay. No KOP, PP, or SPP locations on this map.....	7
Figure 7.	Upper Bay Area. No KOP, PP, or SPP locations on this map.....	8
Figure 8.	Woods Creek Arm.	9
Figure 9.	Northern portion of Woods Creek Arm.	10
Figure 10.	Tuolumne River Arm and Moccasin Arm.	11
Figure 11.	Tuolumne River Arm.	12

1.0 GUIDE TO READING MAPS

The overview map, Figure 1, shows the overall location of the Project reservoir and the general location of Key Observation Points (KOPs).

Figures 2 through 11 show KOP, PP, and SPP Locations and display the BLM Visual Resource Objectives: Class I (shown as Class 1 on the legend) is green and allows no change in visual character. It is the Tuolumne Wild and Scenic River corridor. Class II (Class 2 on the legend) is red and allows only slight change to visual character. This is an Area of Critical Environmental Concern (ACEC). Class III (Class 3 on the legend) is yellow and allows partial change to visual character. BLM has assigned Class III to most of the BLM land in the study area.

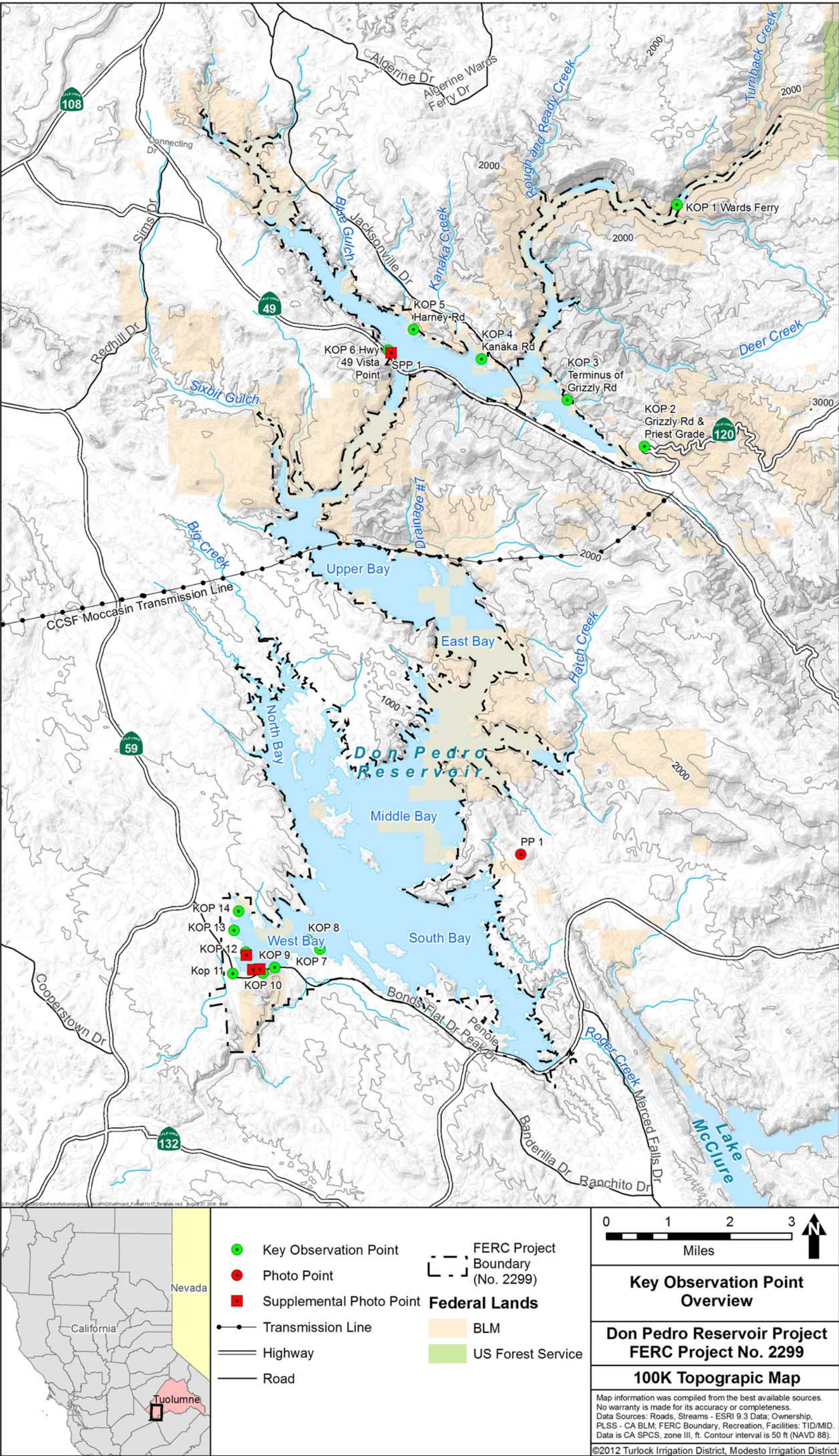


Figure 1. Overview Map.

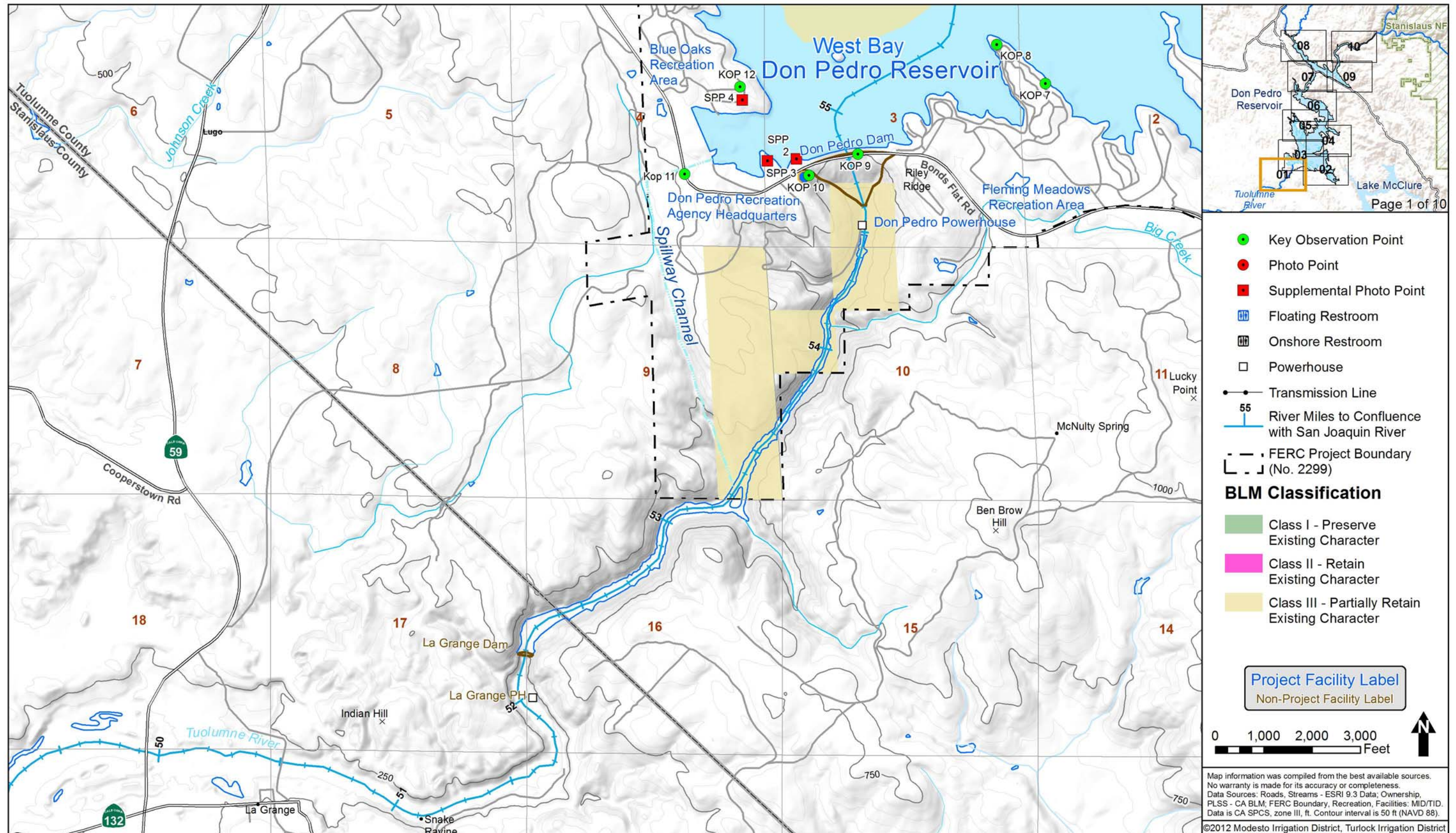


Figure 2. Pedro Dam and Spillway, Blue Oaks and Fleming Meadows Recreation Areas.

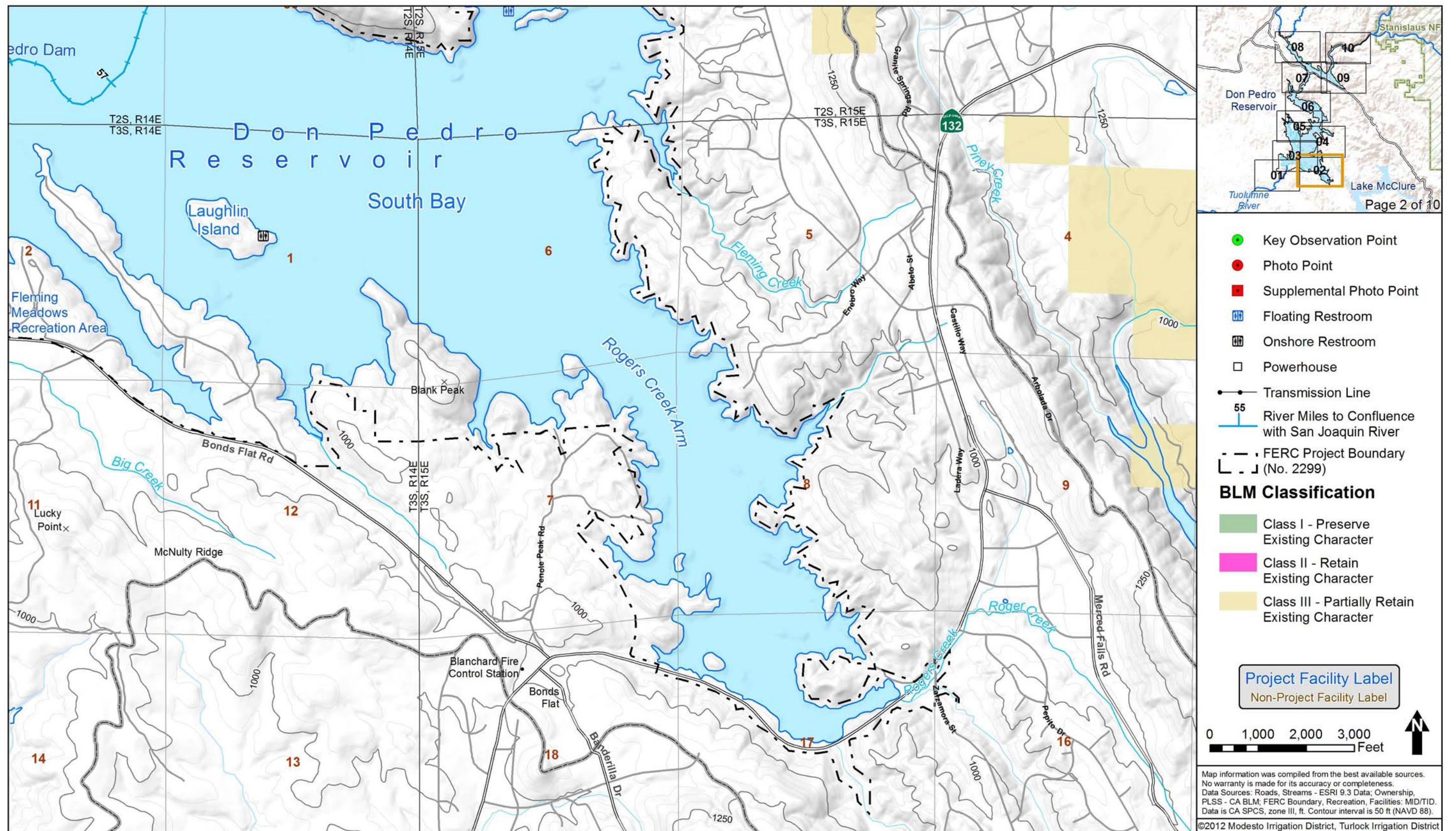


Figure 3. Rogers Creek Arm of Reservoir and State Highway 132. No KOP, PP, or SPP locations on this map

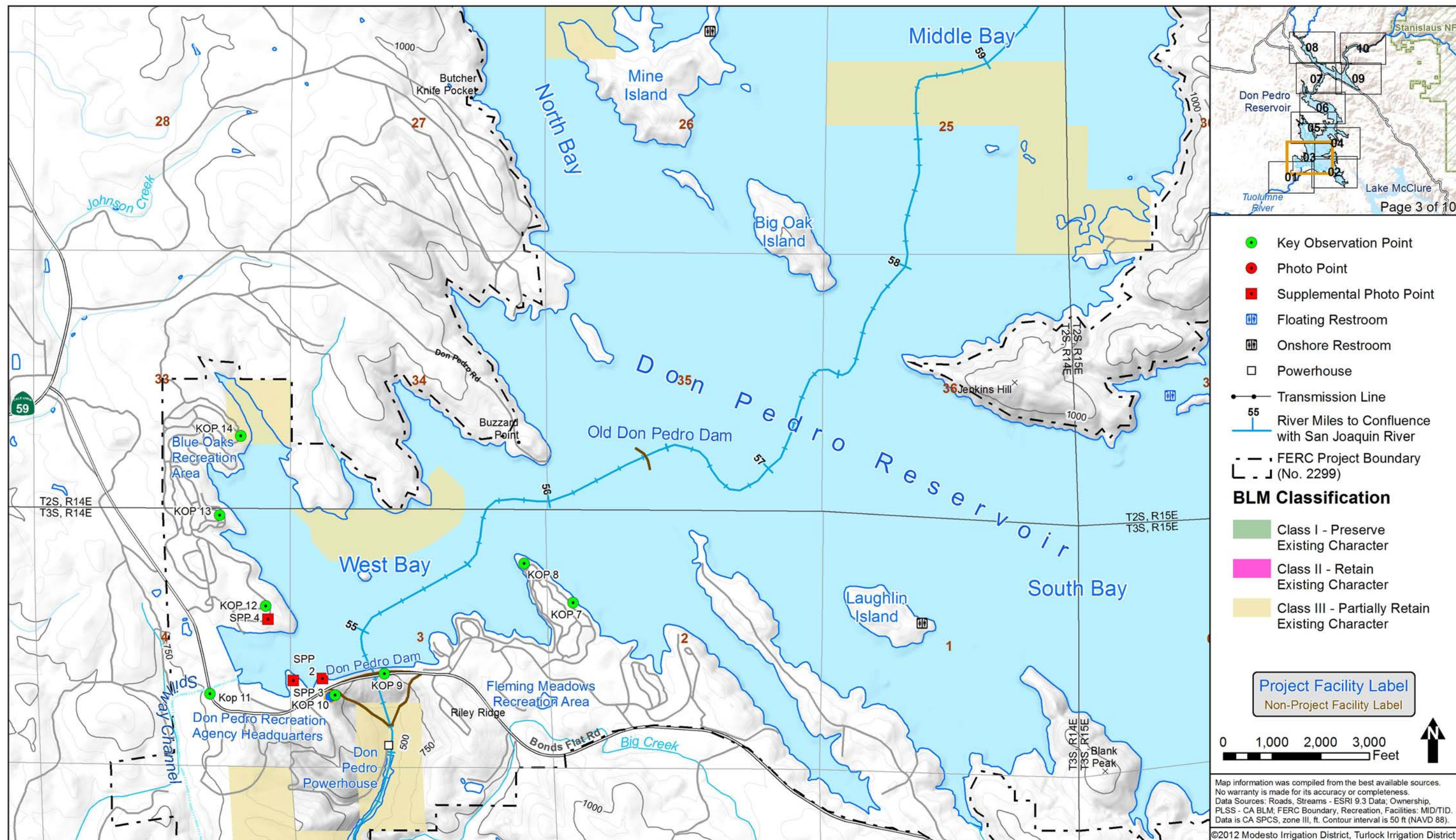


Figure 4. Don Pedro Dam and Spillway, Blue Oaks and Fleming Meadows Recreation Areas, and North Bay.

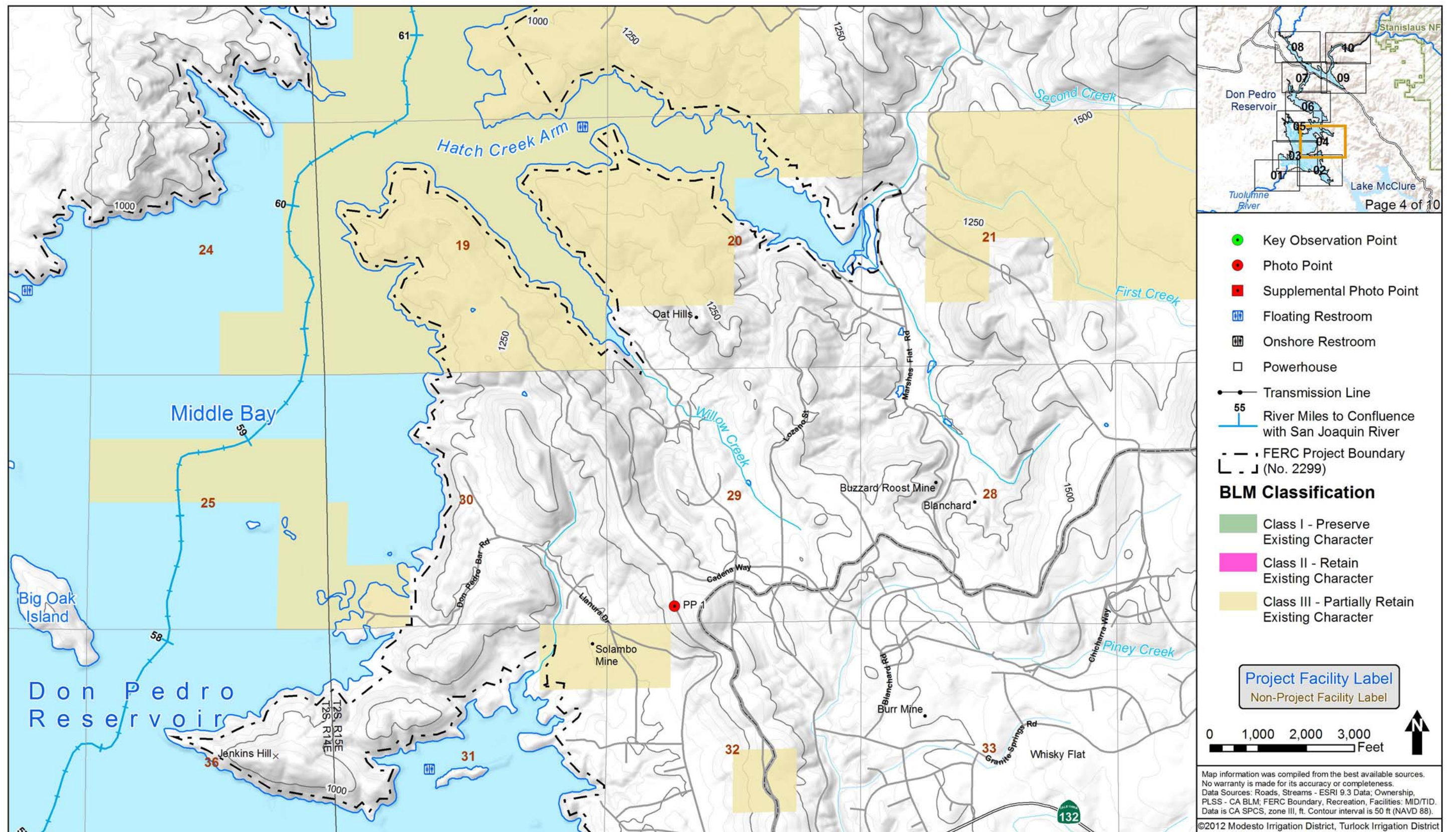


Figure 5. Middle Bay view from private residence area.



Figure 6. 49er Bay. No KOP, PP, or SPP locations on this map.

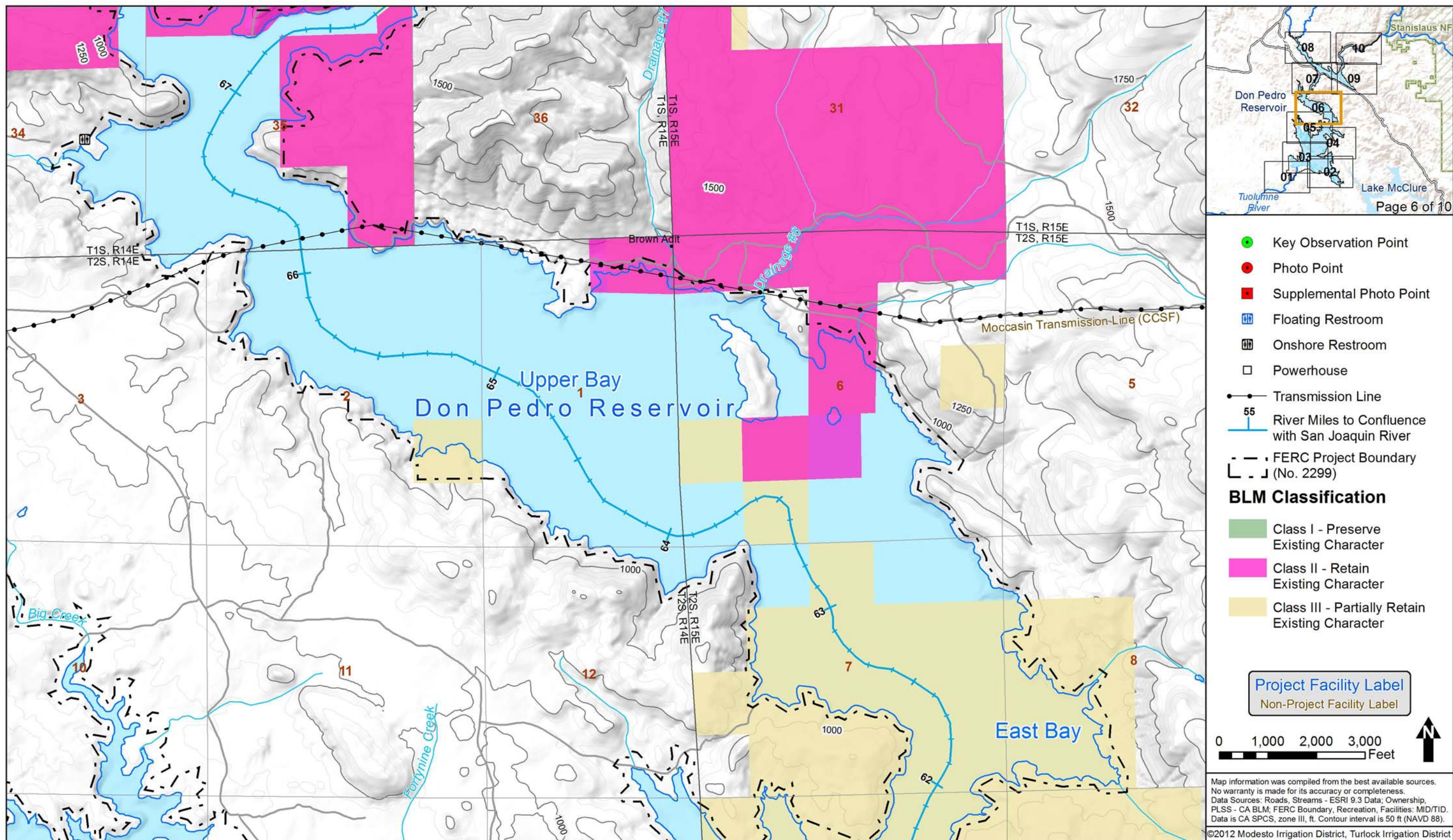


Figure 7. Upper Bay Area. No KOP, PP, or SPP locations on this map.

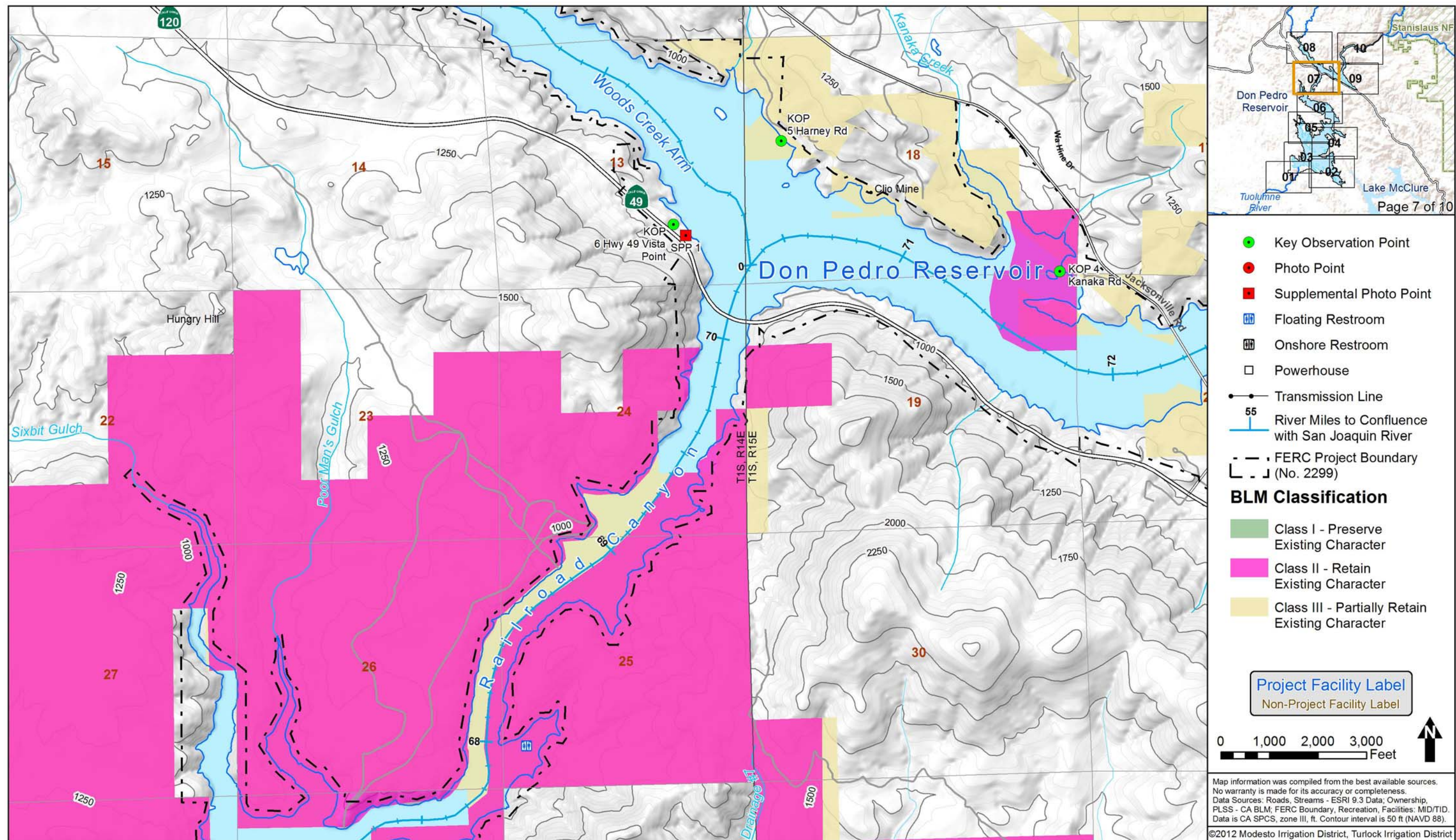


Figure 8. Woods Creek Arm.

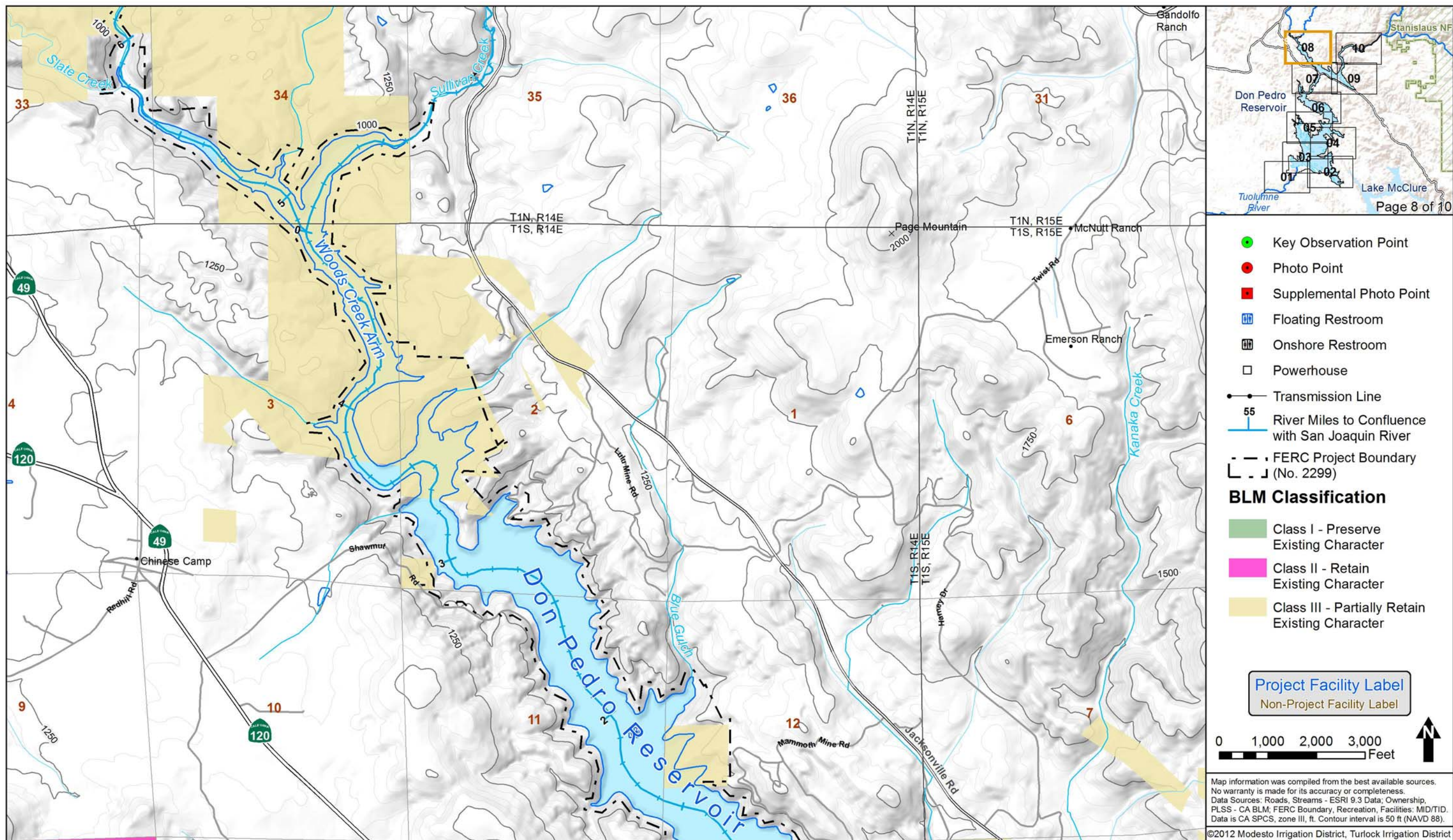


Figure 9. Northern portion of Woods Creek Arm.

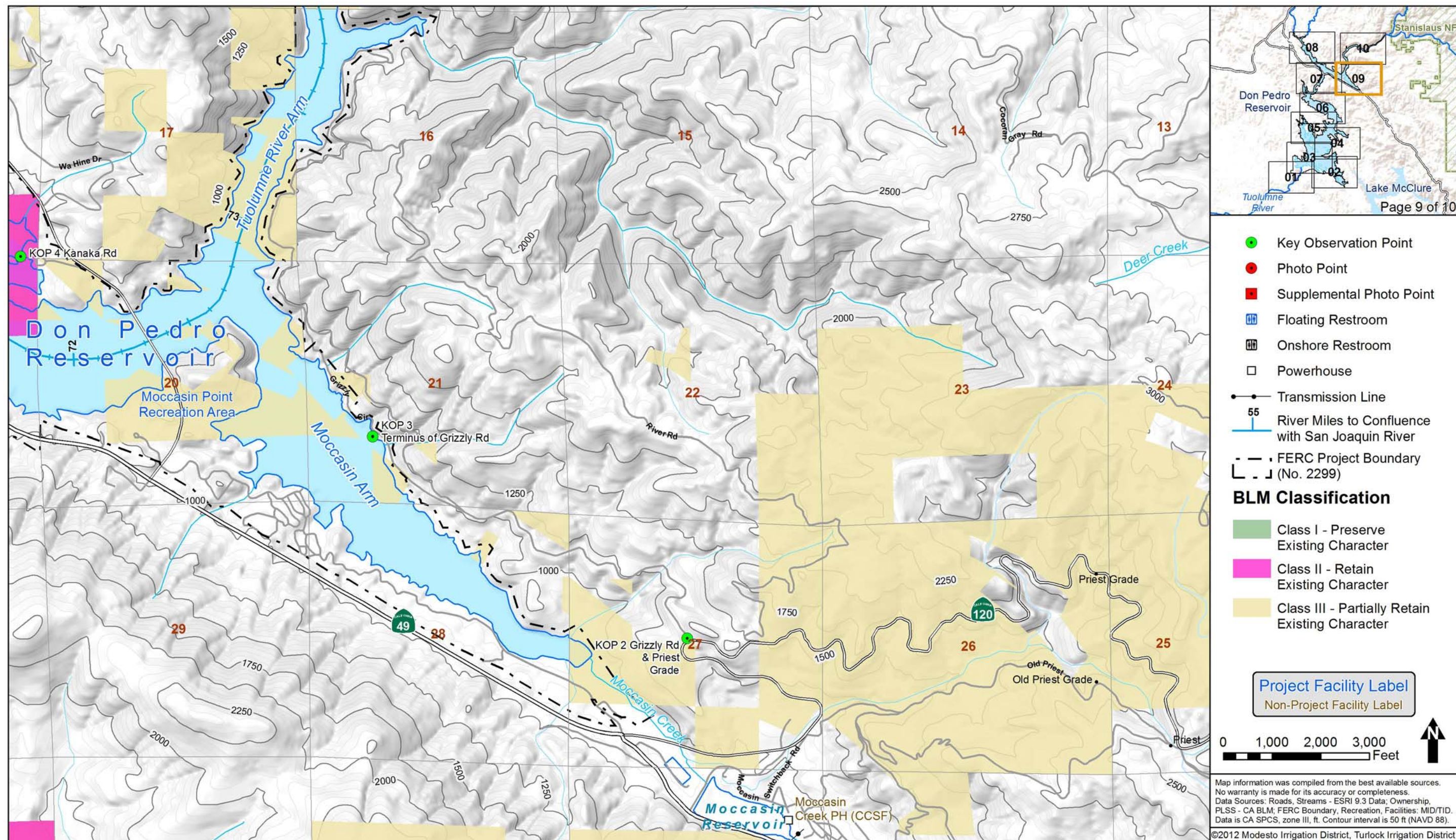


Figure 10. Tuolumne River Arm and Moccasin Arm.

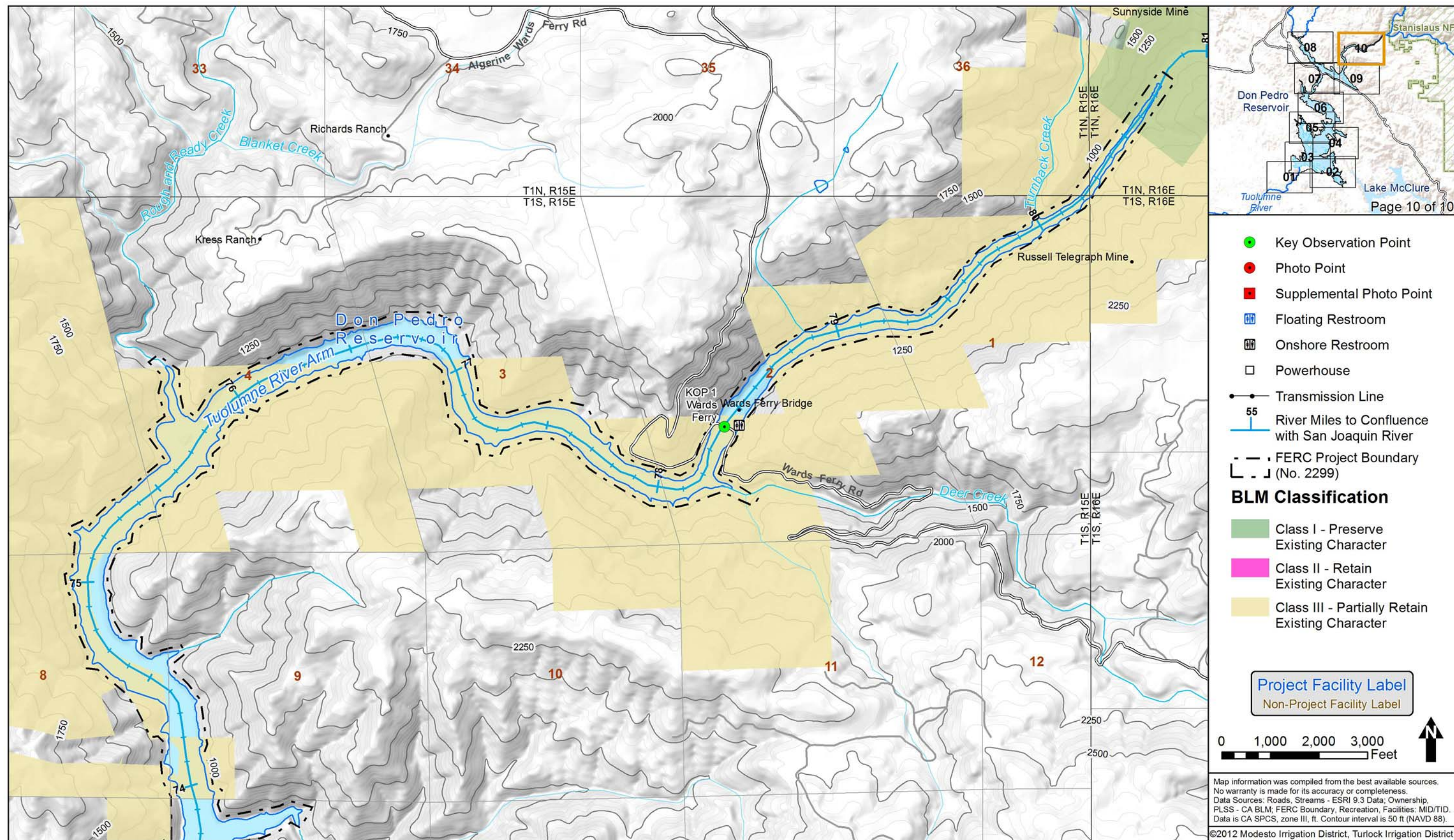


Figure 11. Tuolumne River Arm.