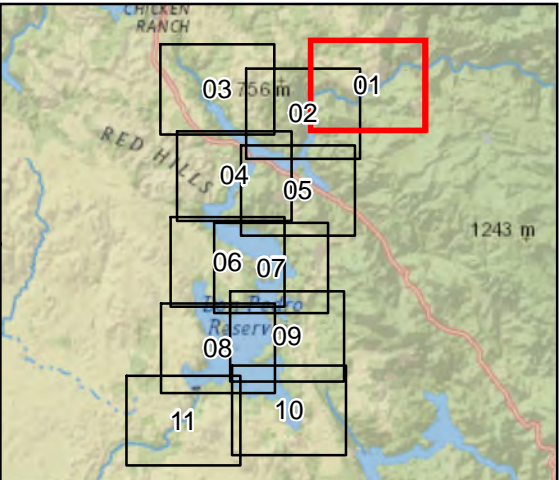
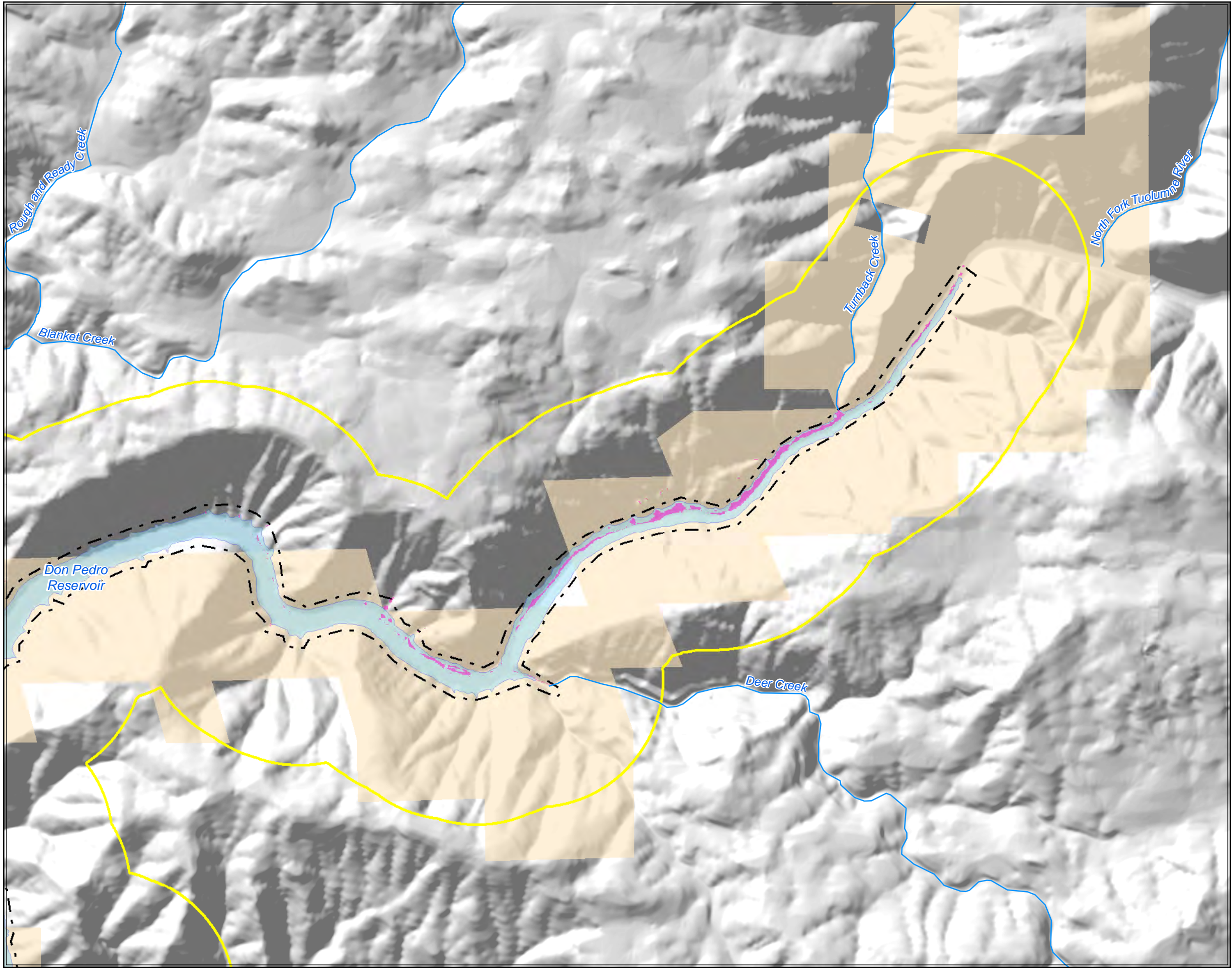


**STUDY REPORT TR-06**  
**SPECIAL-STATUS AMPHIBIANS AND REPTILES**  
**ATTACHMENT A**  
**HABITAT ASSESSMENT AND SURVEY SITE MAPS**

**PART 1**

**WPT HABITAT ASSESSMENT AND SURVEY LOCATIONS  
WITH NESTING HABITAT**





Page 1 of 11

- WPT Observation from Surveys
- WPT Survey Site
- WPT Habitat Assessment Location
- ▲ WPT Historic Record - Merced Relicensing 2010
- ▲ WPT Historic Record - CNDDDB
- ▲ WPT Historic Record - BLM
- WPT Potential Nesting Habitat
- High Water 0.5 Mile Buffer
- FERC Project Boundary (No. 2299)
- ▨ Recreation Area
- ▭ County Boundary
- Normal Maximum Water Surface

**Federal Land Ownership**

- Bureau of Land Management

0 0.25 0.5 1  
Miles

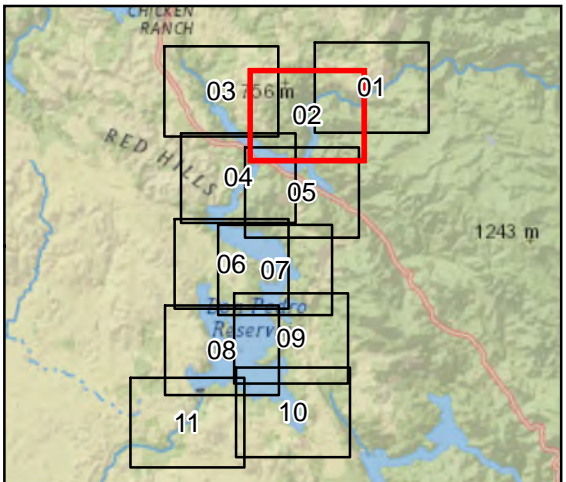
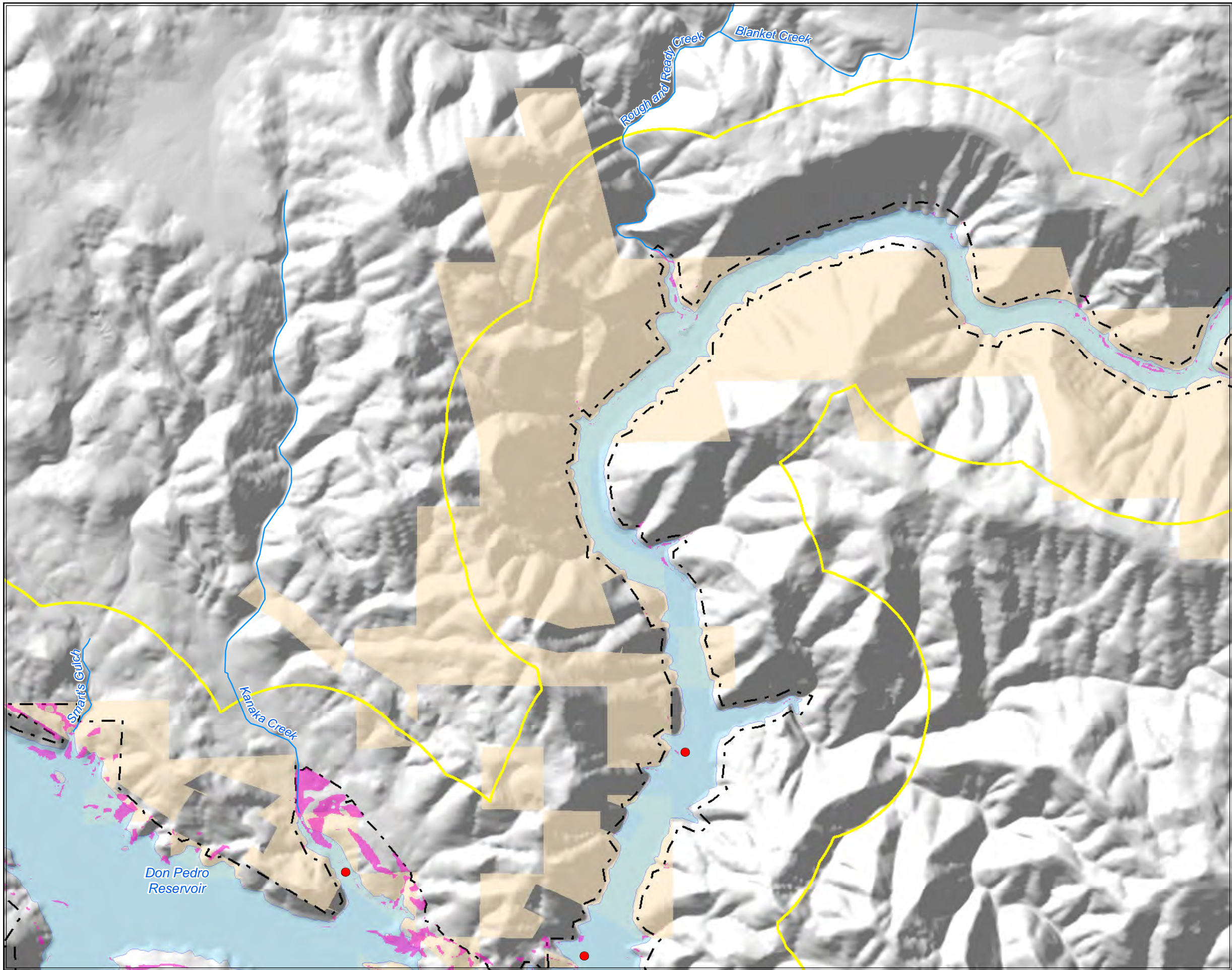
**WPT Habitat Assessment and Survey Locations with Nesting Habitat**

Don Pedro Project (FERC No.2299)

Map information was compiled from the best available sources. No warranty is made for its accuracy or completeness. Data Sources: Hydrography - USGS NHD; Roads - ESRI; Ownership - CA BLM; Water Surface, FERC Boundary, Recreation & Project Facilities - MID/TID. Data is NAD 83, CA State Plane, Zone III, U.S. Feet.

©2012 Modesto Irrigation District, Turlock Irrigation District



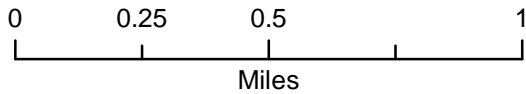


Page 2 of 11

- WPT Observation from Surveys
- WPT Survey Site
- WPT Habitat Assessment Location
- ▲ WPT Historic Record - Merced Relicensing 2010
- ▲ WPT Historic Record - CNDDB
- ▲ WPT Historic Record - BLM
- WPT Potential Nesting Habitat
- High Water 0.5 Mile Buffer
- FERC Project Boundary (No. 2299)
- ▨ Recreation Area
- ▭ County Boundary
- Normal Maximum Water Surface

**Federal Land Ownership**

■ Bureau of Land Management

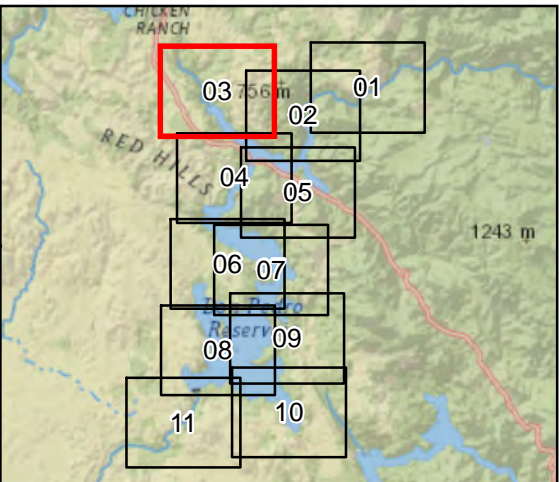
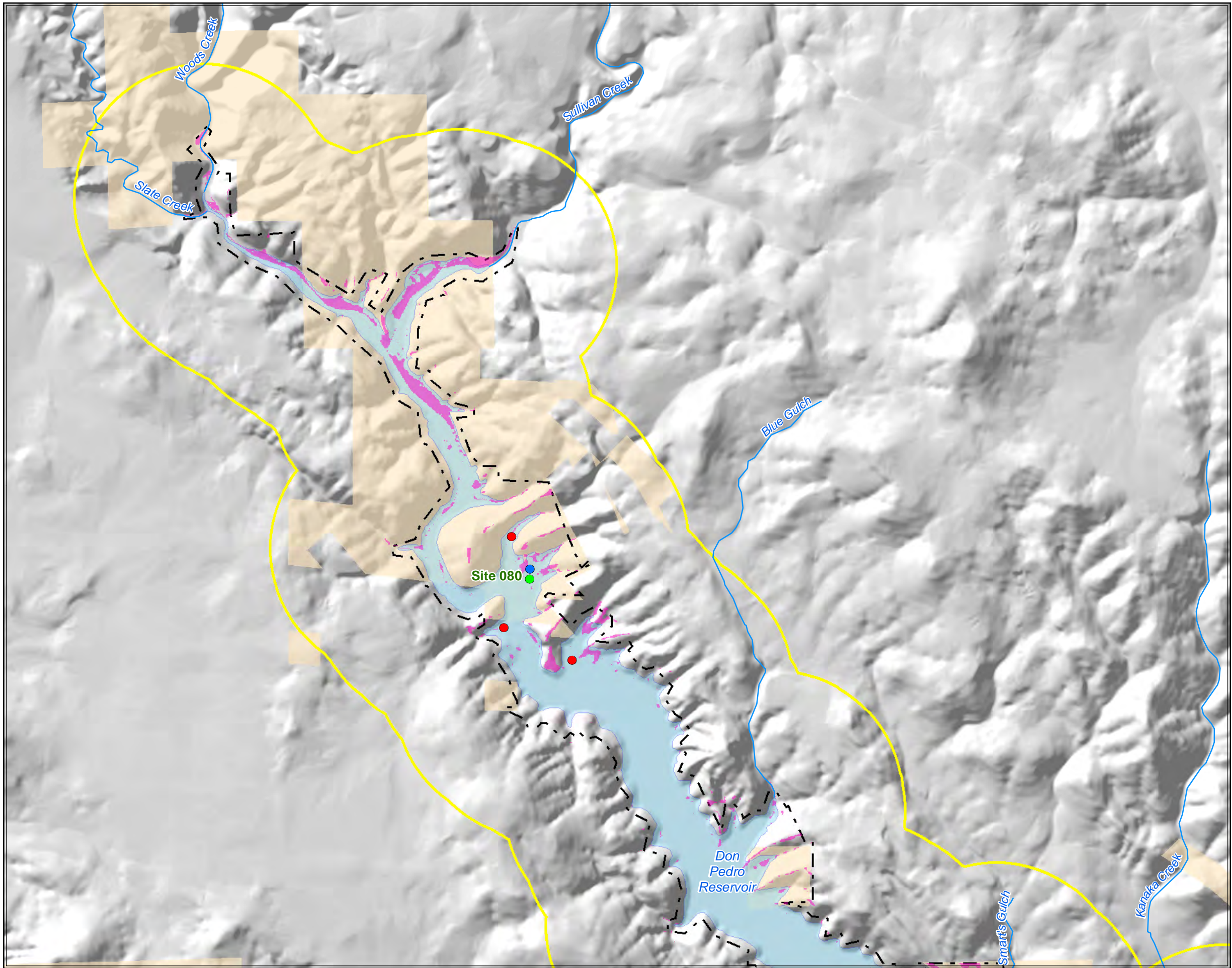


**WPT Habitat Assessment  
and Survey Locations  
with Nesting Habitat**

Don Pedro Project (FERC No.2299)

Map information was compiled from the best available sources. No warranty is made for its accuracy or completeness. Data Sources: Hydrography - USGS NHD; Roads - ESRI; Ownership - CA BLM; Water Surface, FERC Boundary, Recreation & Project Facilities - MID/TID. Data is NAD 83, CA State Plane, Zone III, U.S. Feet.

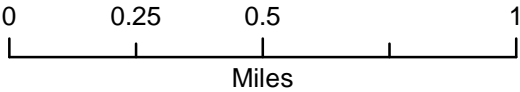




- WPT Observation from Surveys
- WPT Survey Site
- WPT Habitat Assessment Location
- ▲ WPT Historic Record - Merced Relicensing 2010
- ▲ WPT Historic Record - CNDDB
- ▲ WPT Historic Record - BLM
- WPT Potential Nesting Habitat
- High Water 0.5 Mile Buffer
- FERC Project Boundary (No. 2299)
- ▨ Recreation Area
- ▭ County Boundary
- Normal Maximum Water Surface

**Federal Land Ownership**

- Bureau of Land Management

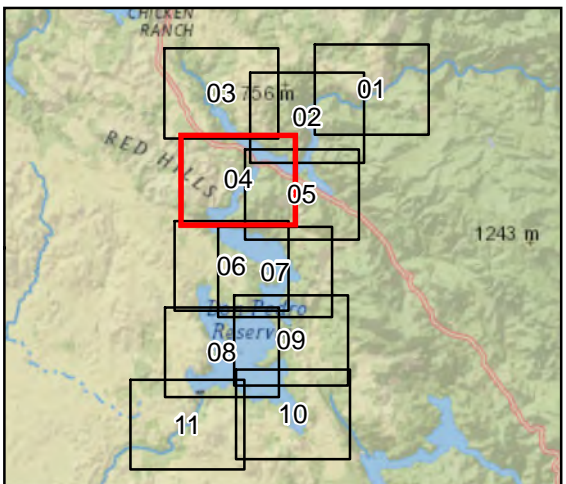
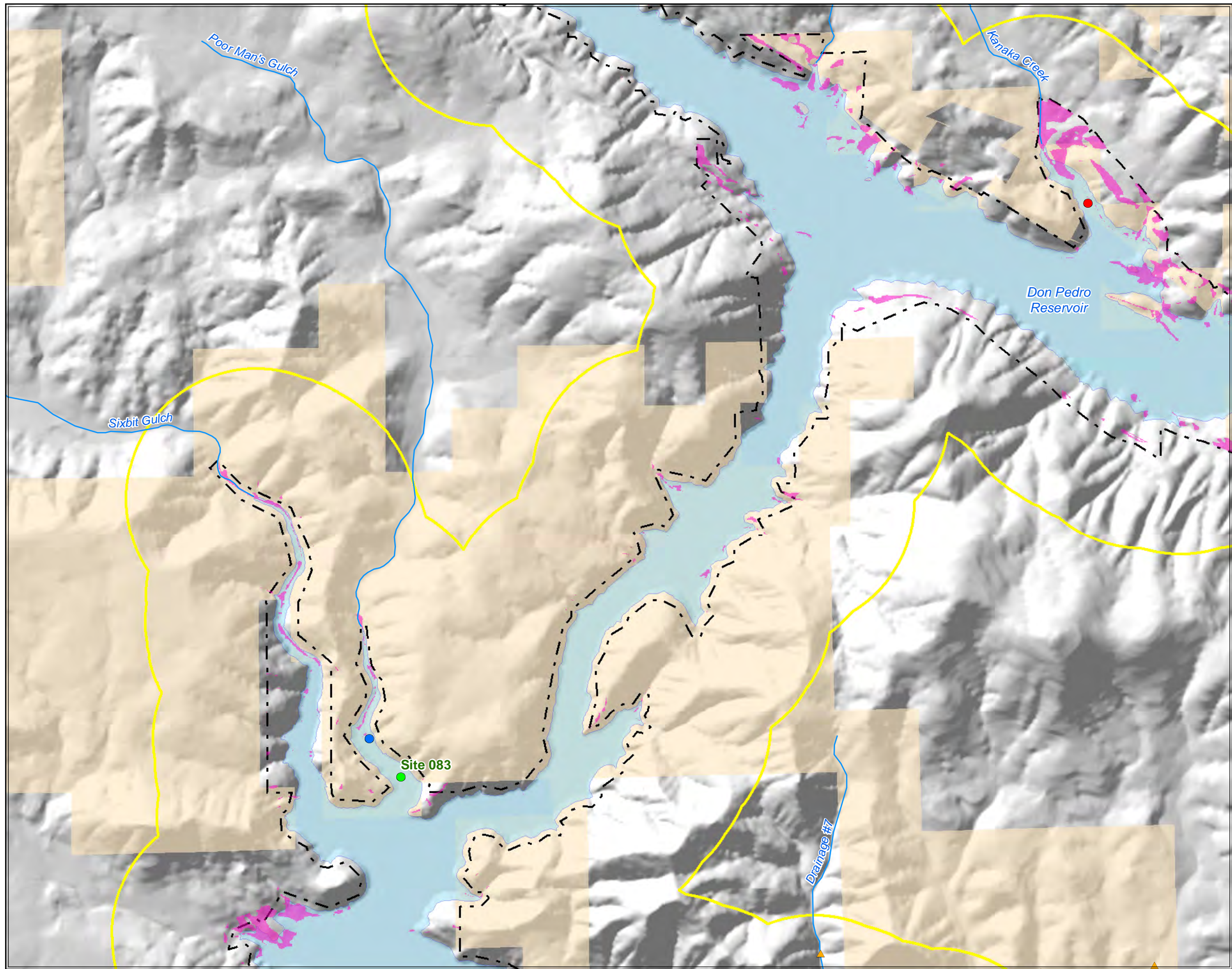


**WPT Habitat Assessment  
and Survey Locations  
with Nesting Habitat**

Don Pedro Project (FERC No.2299)

Map information was compiled from the best available sources. No warranty is made for its accuracy or completeness. Data Sources: Hydrography - USGS NHD; Roads - ESRI; Ownership - CA BLM; Water Surface, FERC Boundary, Recreation & Project Facilities - MID/TID. Data is NAD 83, CA State Plane, Zone III, U.S. Feet.



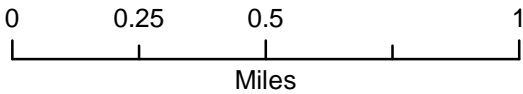


Page 4 of 11

- WPT Observation from Surveys
- WPT Survey Site
- WPT Habitat Assessment Location
- ▲ WPT Historic Record - Merced Relicensing 2010
- ▲ WPT Historic Record - CNDDDB
- ▲ WPT Historic Record - BLM
- WPT Potential Nesting Habitat
- High Water 0.5 Mile Buffer
- FERC Project Boundary (No. 2299)
- ▨ Recreation Area
- ▭ County Boundary
- Normal Maximum Water Surface

**Federal Land Ownership**

- Bureau of Land Management

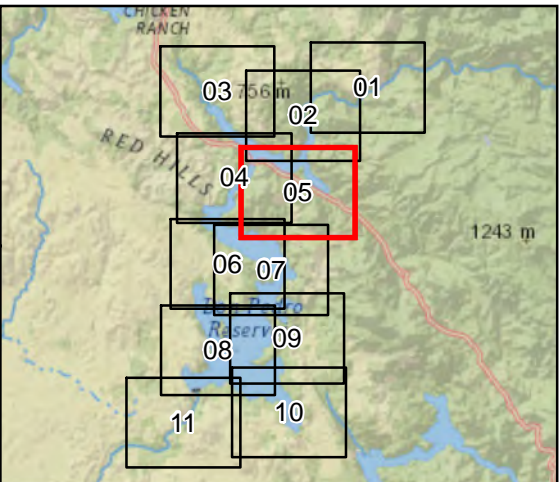
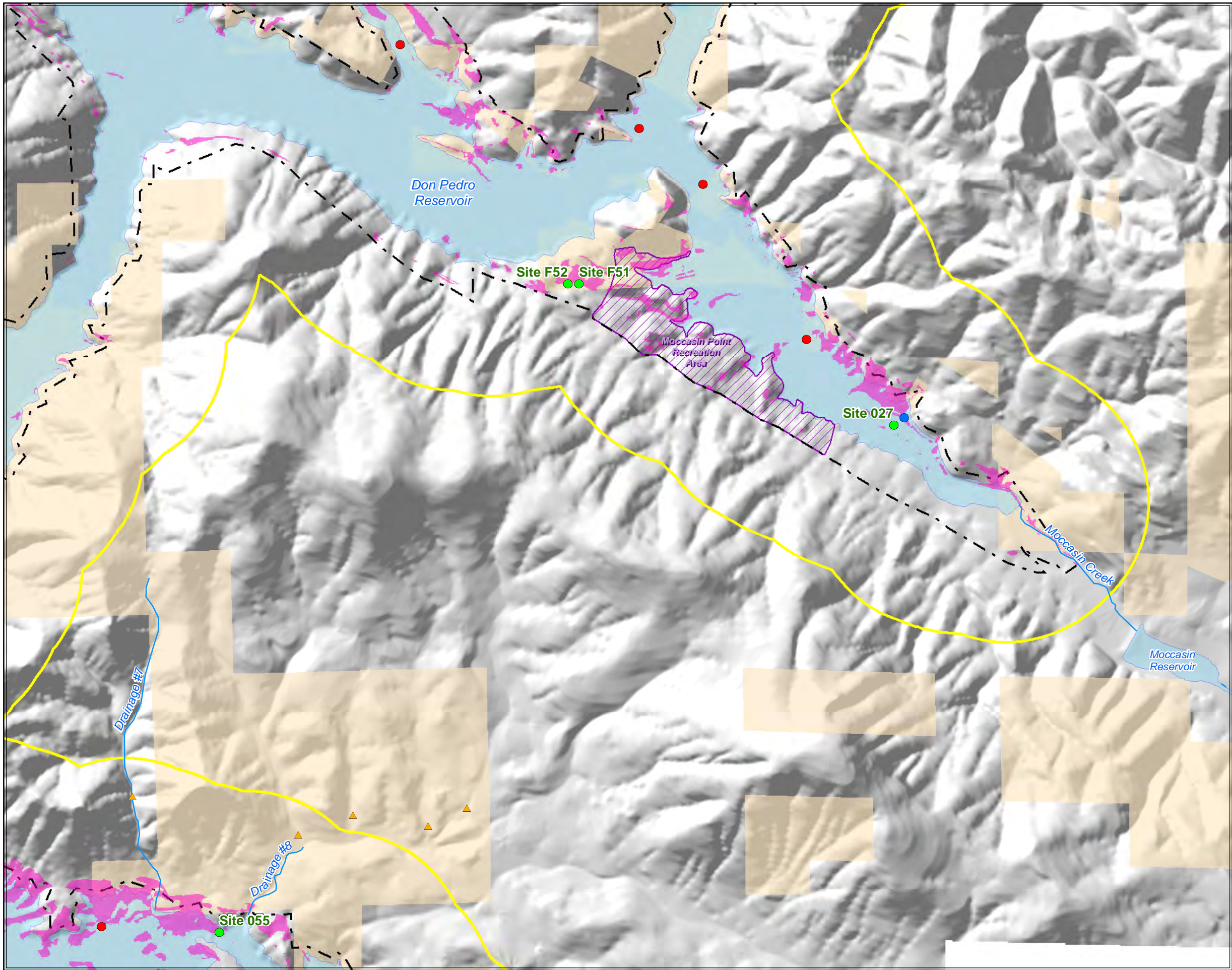


**WPT Habitat Assessment  
and Survey Locations  
with Nesting Habitat**

Don Pedro Project (FERC No.2299)

Map information was compiled from the best available sources. No warranty is made for its accuracy or completeness.  
Data Sources: Hydrography - USGS NHD; Roads - ESRI; Ownership - CA BLM; Water Surface, FERC Boundary, Recreation & Project Facilities - MID/TID.  
Data is NAD 83, CA State Plane, Zone III, U.S. Feet.

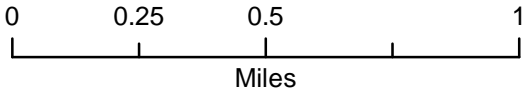




- WPT Observation from Surveys
- WPT Survey Site
- WPT Habitat Assessment Location
- ▲ WPT Historic Record - Merced Relicensing 2010
- ▲ WPT Historic Record - CNDDB
- ▲ WPT Historic Record - BLM
- WPT Potential Nesting Habitat
- High Water 0.5 Mile Buffer
- FERC Project Boundary (No. 2299)
- ▨ Recreation Area
- ▭ County Boundary
- Normal Maximum Water Surface

**Federal Land Ownership**

- Bureau of Land Management

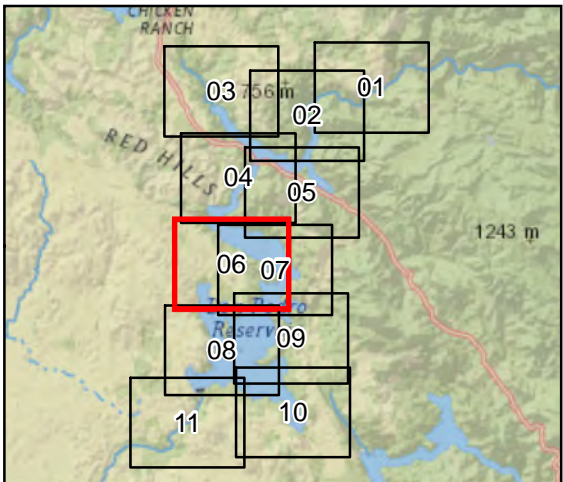
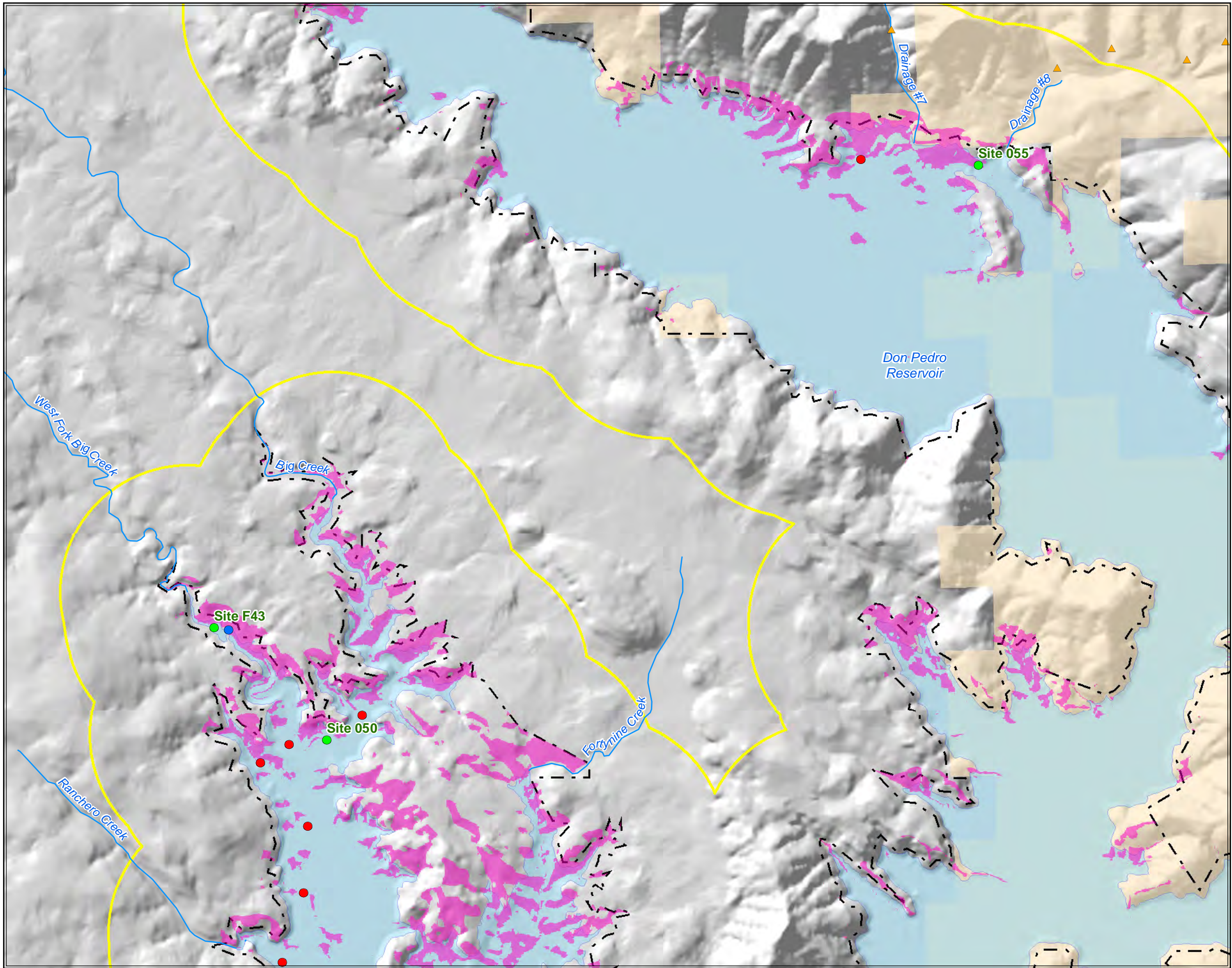


**WPT Habitat Assessment  
and Survey Locations  
with Nesting Habitat**

Don Pedro Project (FERC No.2299)

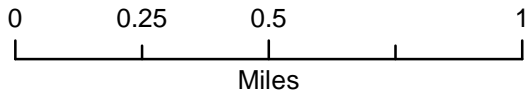
Map information was compiled from the best available sources. No warranty is made for its accuracy or completeness.  
Data Sources: Hydrography - USGS NHD; Roads - ESRI; Ownership - CA BLM; Water Surface, FERC Boundary, Recreation & Project Facilities - MID/TID.  
Data is NAD 83, CA State Plane, Zone III, U.S. Feet.





Page 6 of 11

- WPT Observation from Surveys
- WPT Survey Site
- WPT Habitat Assessment Location
- ▲ WPT Historic Record - Merced Relicensing 2010
- ▲ WPT Historic Record - CNDDDB
- ▲ WPT Historic Record - BLM
- WPT Potential Nesting Habitat
- High Water 0.5 Mile Buffer
- FERC Project Boundary (No. 2299)
- ▨ Recreation Area
- ▭ County Boundary
- Normal Maximum Water Surface
- Federal Land Ownership**
  - Bureau of Land Management



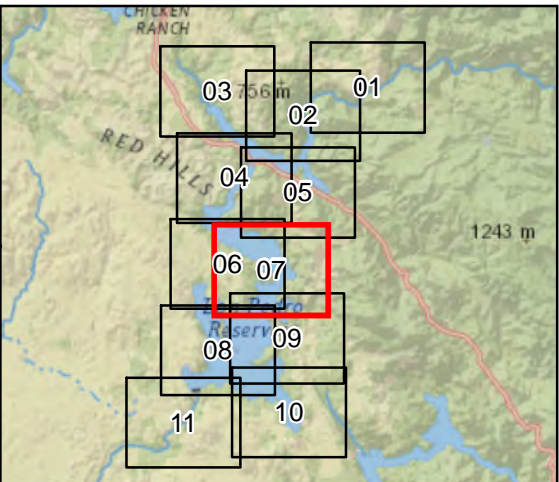
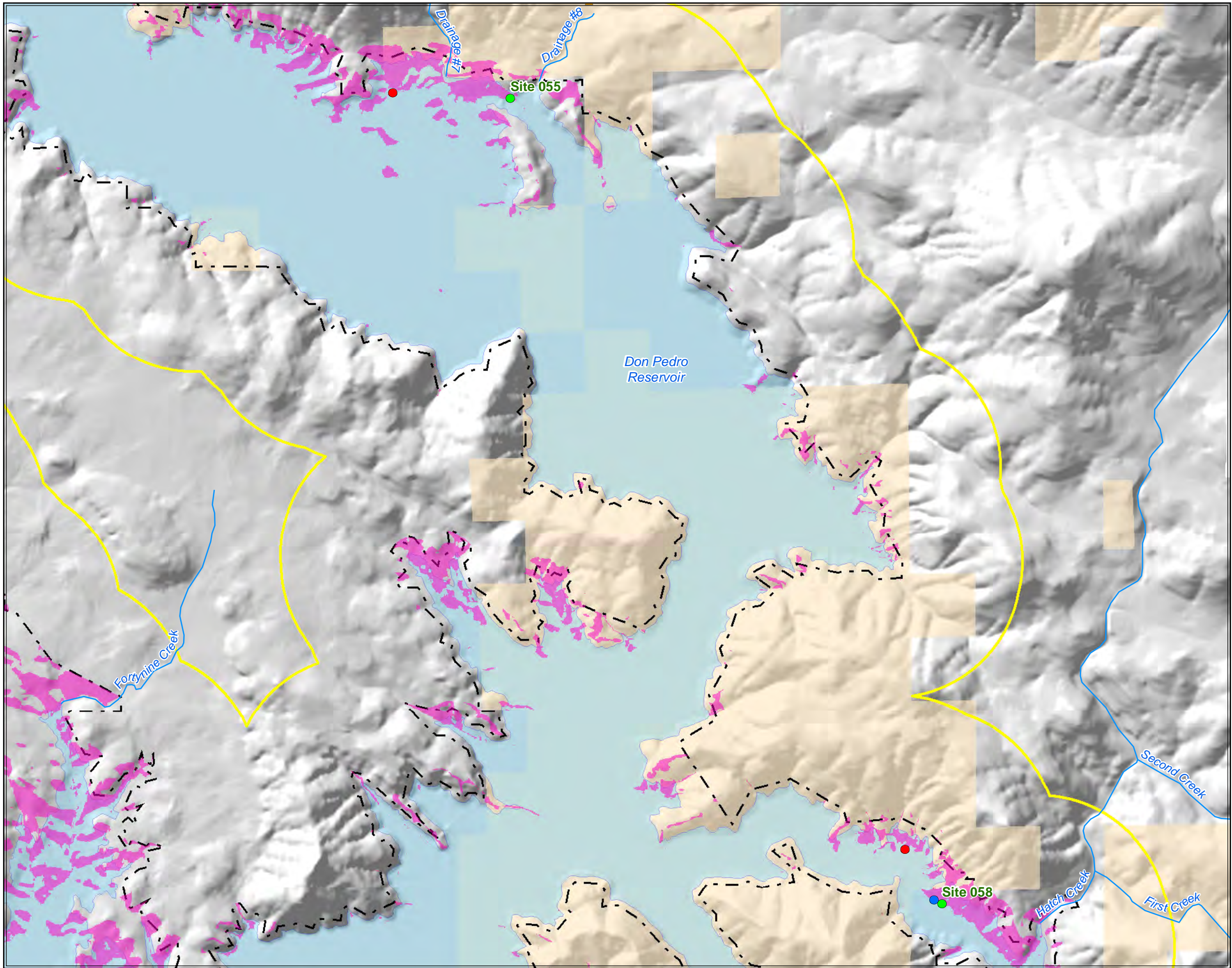
## WPT Habitat Assessment and Survey Locations with Nesting Habitat

Don Pedro Project (FERC No.2299)

Map information was compiled from the best available sources. No warranty is made for its accuracy or completeness. Data Sources: Hydrography - USGS NHD; Roads - ESRI; Ownership - CA BLM; Water Surface, FERC Boundary, Recreation & Project Facilities - MID/TID. Data is NAD 83, CA State Plane, Zone III, U.S. Feet.

©2012 Modesto Irrigation District, Turlock Irrigation District



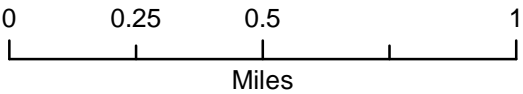


Page 7 of 11

- WPT Observation from Surveys
- WPT Survey Site
- WPT Habitat Assessment Location
- ▲ WPT Historic Record - Merced Relicensing 2010
- ▲ WPT Historic Record - CNDDDB
- ▲ WPT Historic Record - BLM
- WPT Potential Nesting Habitat
- High Water 0.5 Mile Buffer
- - - FERC Project Boundary (No. 2299)
- ▨ Recreation Area
- ▭ County Boundary
- Normal Maximum Water Surface

**Federal Land Ownership**

■ Bureau of Land Management



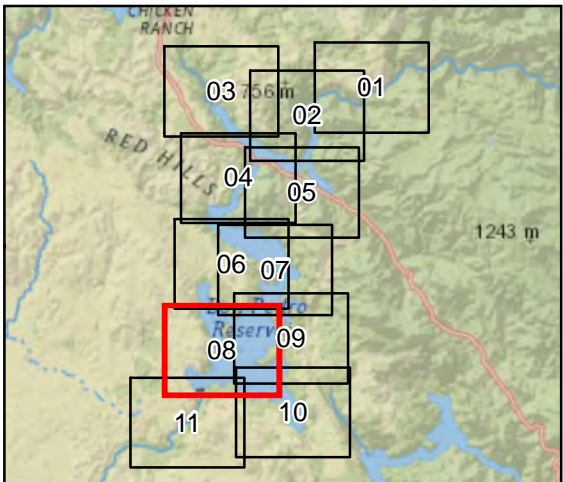
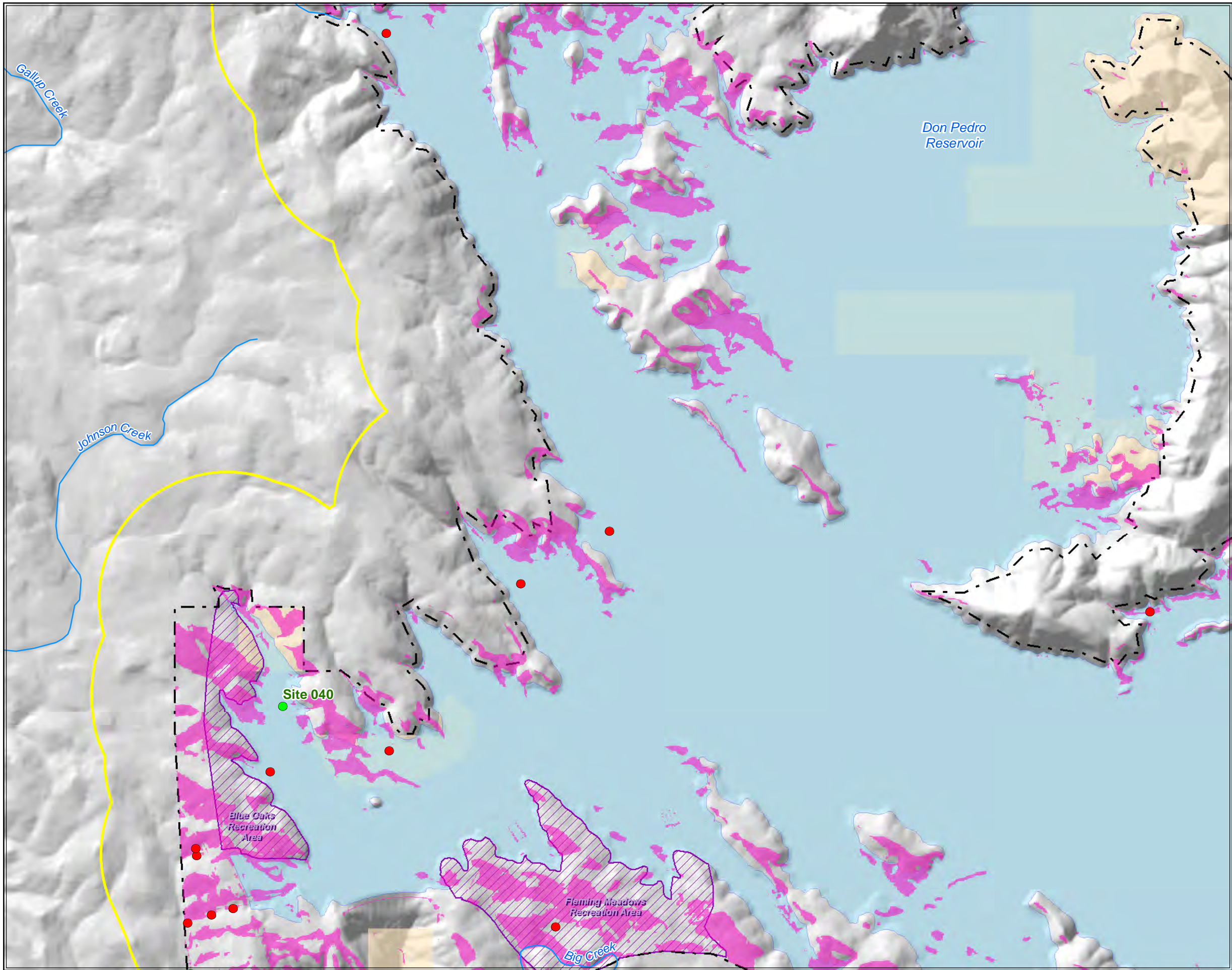
**WPT Habitat Assessment  
and Survey Locations  
with Nesting Habitat**

Don Pedro Project (FERC No.2299)

Map information was compiled from the best available sources. No warranty is made for its accuracy or completeness. Data Sources: Hydrography - USGS NHD; Roads - ESRI; Ownership - CA BLM; Water Surface, FERC Boundary, Recreation & Project Facilities - MID/TID. Data is NAD 83, CA State Plane, Zone III, U.S. Feet.

©2012 Modesto Irrigation District, Turlock Irrigation District



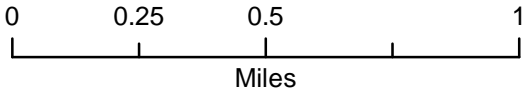


Page 8 of 11

- WPT Observation from Surveys
- WPT Survey Site
- WPT Habitat Assessment Location
- ▲ WPT Historic Record - Merced Relicensing 2010
- ▲ WPT Historic Record - CNDDb
- ▲ WPT Historic Record - BLM
- WPT Potential Nesting Habitat
- High Water 0.5 Mile Buffer
- FERC Project Boundary (No. 2299)
- ▨ Recreation Area
- ▭ County Boundary
- Normal Maximum Water Surface

**Federal Land Ownership**

- Bureau of Land Management

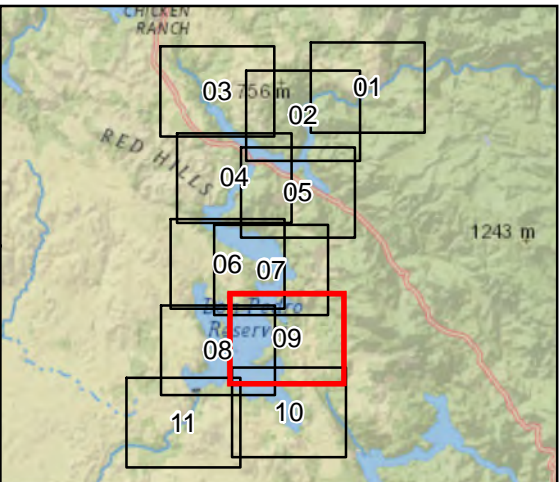
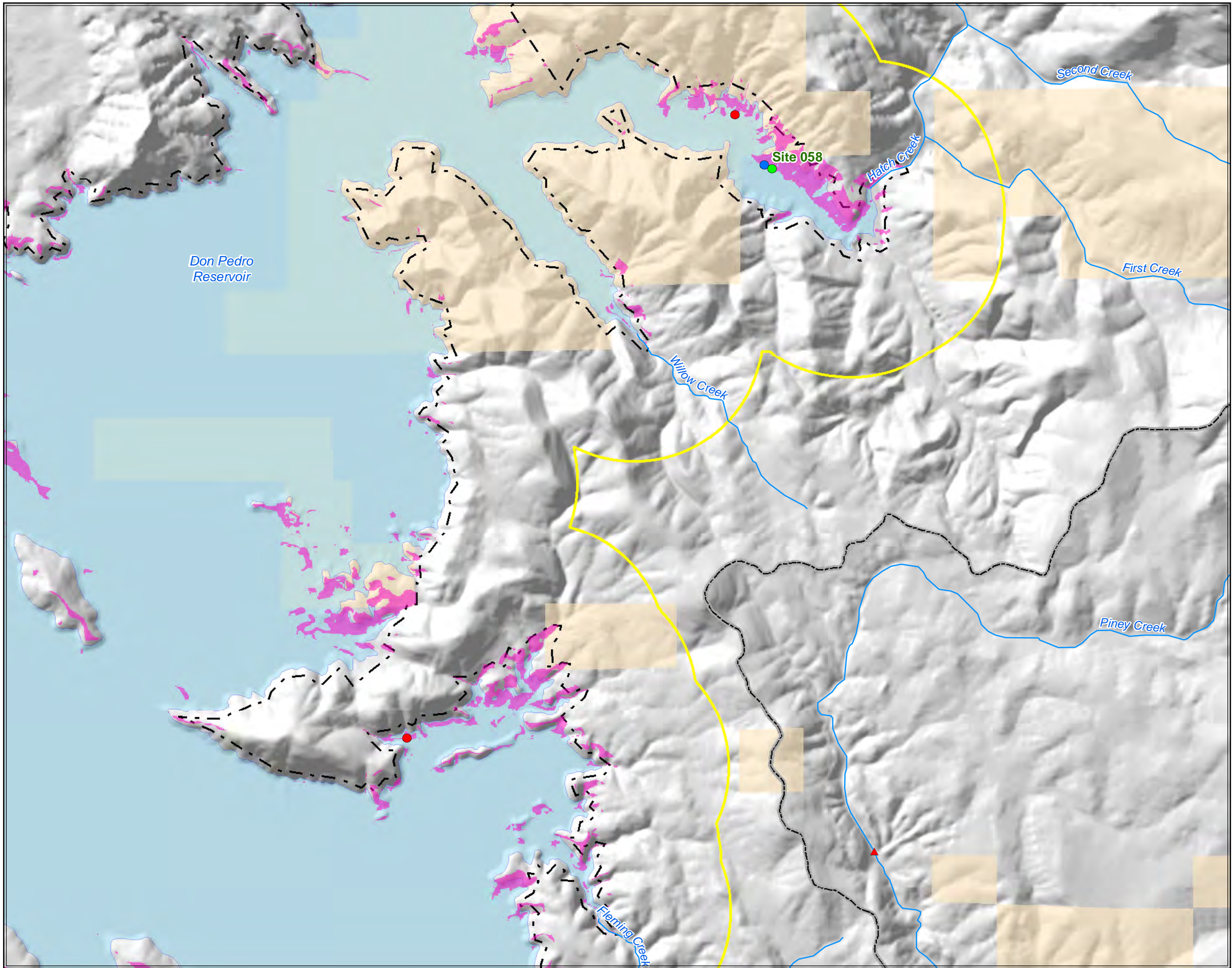


**WPT Habitat Assessment  
and Survey Locations  
with Nesting Habitat**

Don Pedro Project (FERC No.2299)

Map information was compiled from the best available sources. No warranty is made for its accuracy or completeness. Data Sources: Hydrography - USGS NHD; Roads - ESRI; Ownership - CA BLM; Water Surface, FERC Boundary, Recreation & Project Facilities - MID/TID. Data is NAD 83, CA State Plane, Zone III, U.S. Feet.

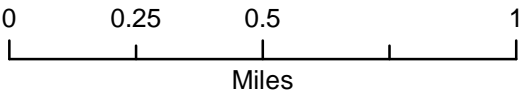




- WPT Observation from Surveys
- WPT Survey Site
- WPT Habitat Assessment Location
- ▲ WPT Historic Record - Merced Relicensing 2010
- ▲ WPT Historic Record - CNDDDB
- ▲ WPT Historic Record - BLM
- WPT Potential Nesting Habitat
- High Water 0.5 Mile Buffer
- FERC Project Boundary (No. 2299)
- ▨ Recreation Area
- ▭ County Boundary
- Normal Maximum Water Surface

**Federal Land Ownership**

■ Bureau of Land Management

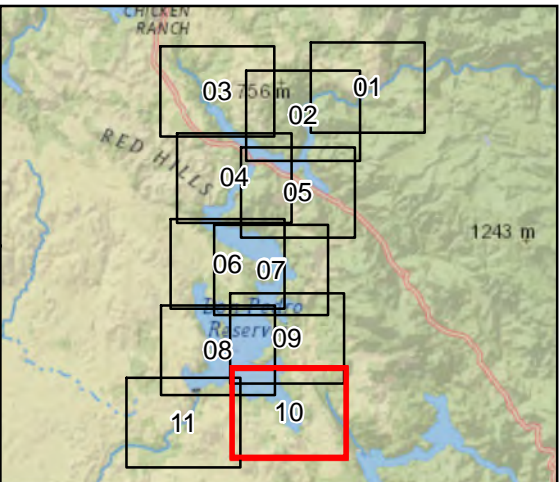
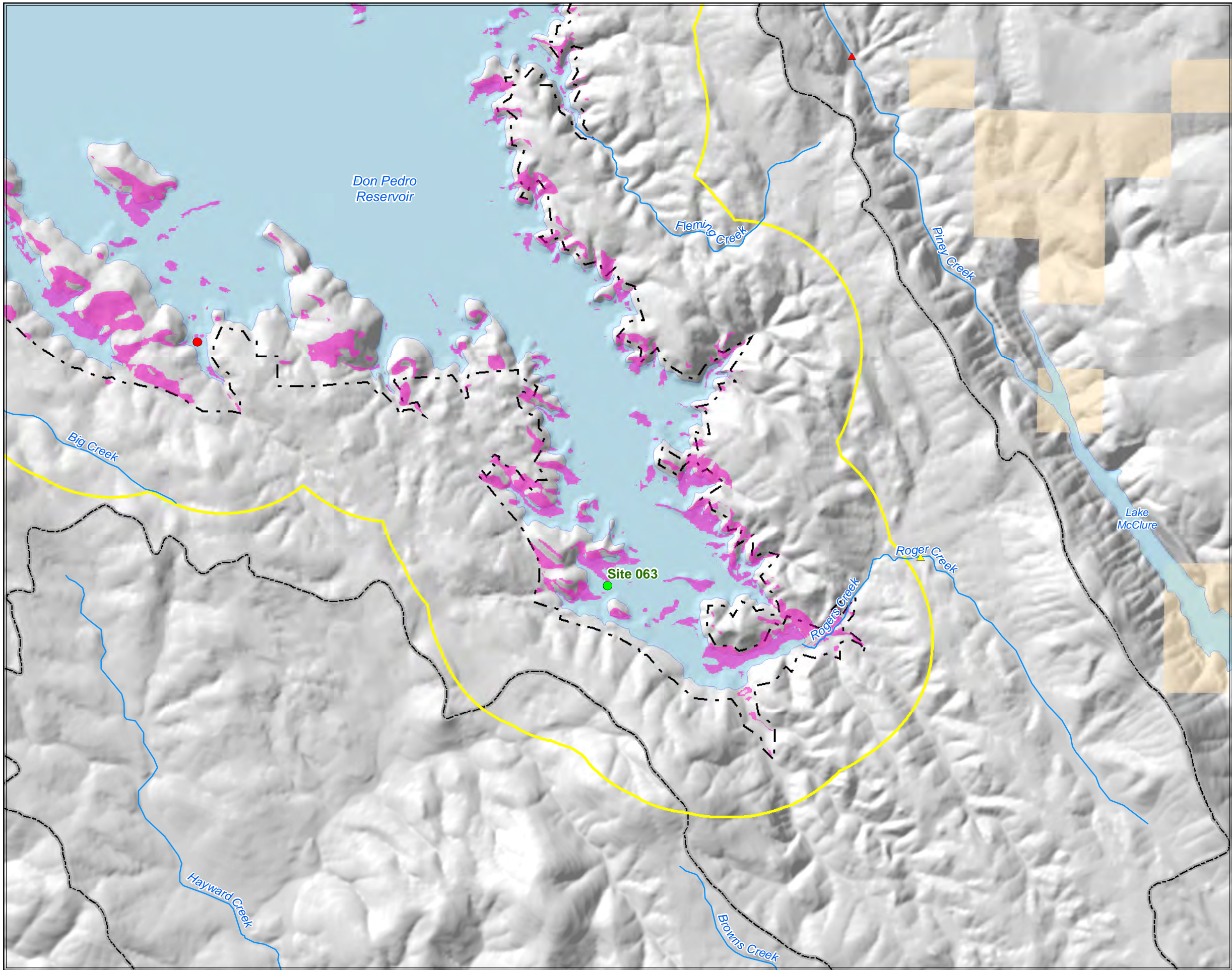


**WPT Habitat Assessment  
and Survey Locations  
with Nesting Habitat**

Don Pedro Project (FERC No.2299)

Map information was compiled from the best available sources. No warranty is made for its accuracy or completeness. Data Sources: Hydrography - USGS NHD; Roads - ESRI; Ownership - CA BLM; Water Surface, FERC Boundary, Recreation & Project Facilities - MID/TID. Data is NAD 83, CA State Plane, Zone III, U.S. Feet.

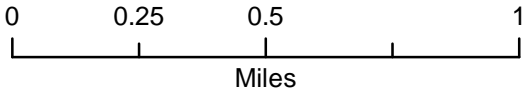




- WPT Observation from Surveys
- WPT Survey Site
- WPT Habitat Assessment Location
- ▲ WPT Historic Record - Merced Relicensing 2010
- ▲ WPT Historic Record - CNDDDB
- ▲ WPT Historic Record - BLM
- WPT Potential Nesting Habitat
- High Water 0.5 Mile Buffer
- - - FERC Project Boundary (No. 2299)
- ▨ Recreation Area
- ▭ County Boundary
- Normal Maximum Water Surface

**Federal Land Ownership**

- Bureau of Land Management

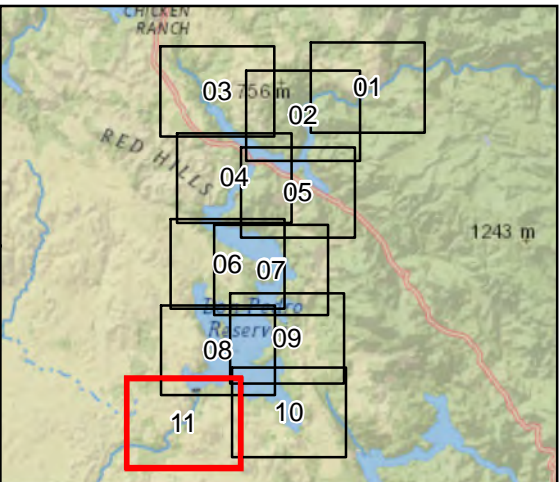
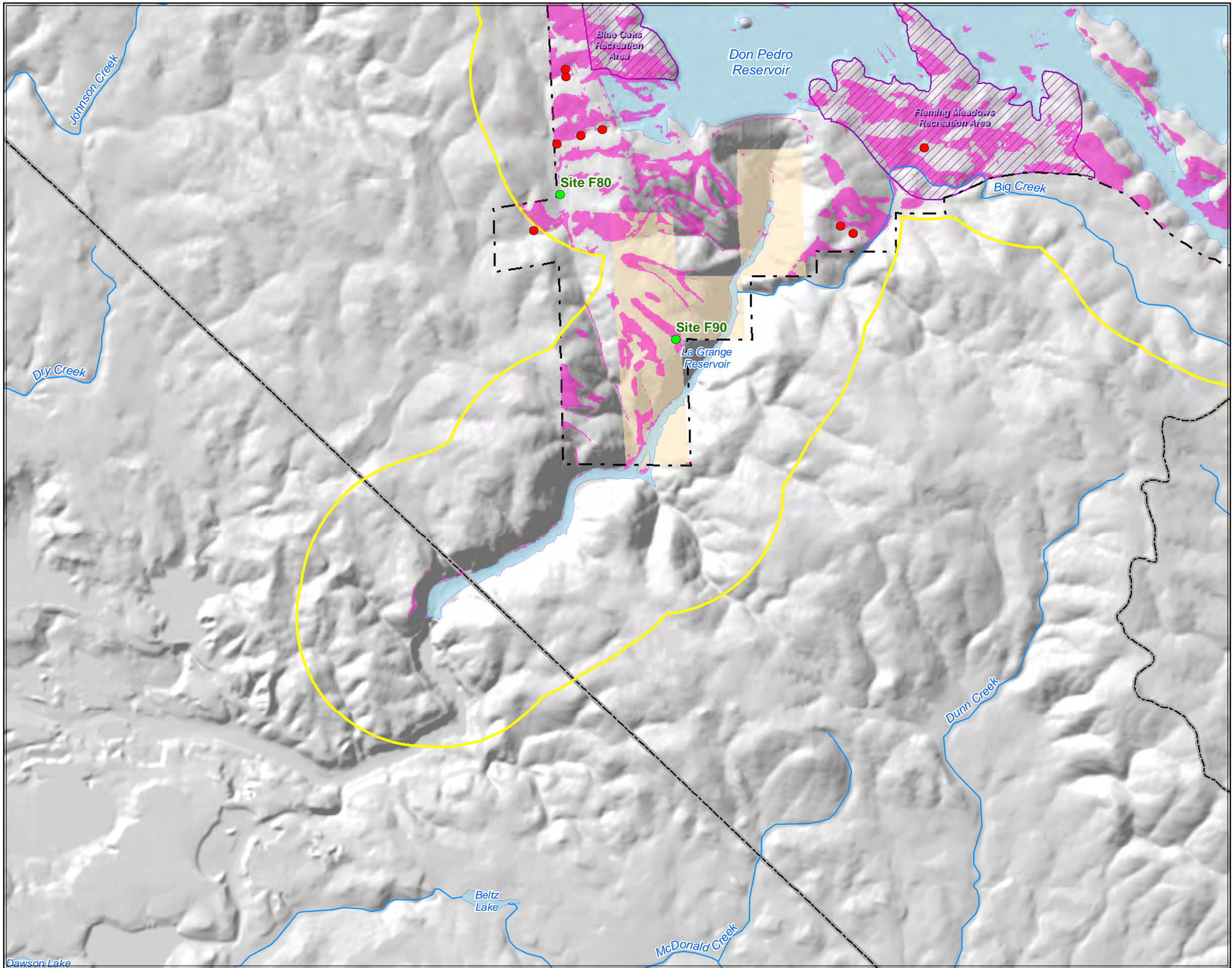


**WPT Habitat Assessment  
and Survey Locations  
with Nesting Habitat**

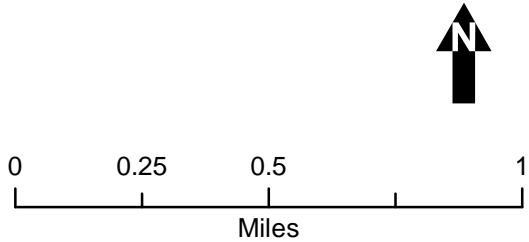
Don Pedro Project (FERC No.2299)

Map information was compiled from the best available sources. No warranty is made for its accuracy or completeness. Data Sources: Hydrography - USGS NHD; Roads - ESRI; Ownership - CA BLM; Water Surface, FERC Boundary, Recreation & Project Facilities - MID/TID. Data is NAD 83, CA State Plane, Zone III, U.S. Feet.





- WPT Observation from Surveys
  - WPT Survey Site
  - WPT Habitat Assessment Location
  - ▲ WPT Historic Record - Merced Relicensing 2010
  - ▲ WPT Historic Record - CNDDDB
  - ▲ WPT Historic Record - BLM
  - WPT Potential Nesting Habitat
  - High Water 0.5 Mile Buffer
  - FERC Project Boundary (No. 2299)
  - Recreation Area
  - County Boundary
  - Normal Maximum Water Surface
- Federal Land Ownership**
- Bureau of Land Management



## WPT Habitat Assessment and Survey Locations with Nesting Habitat

Don Pedro Project (FERC No.2299)

Map information was compiled from the best available sources. No warranty is made for its accuracy or completeness. Data Sources: Hydrography - USGS NHD; Roads - ESRI; Ownership - CA BLM; Water Surface, FERC Boundary, Recreation & Project Facilities - MID/TID. Data is NAD 83, CA State Plane, Zone III, U.S. Feet.



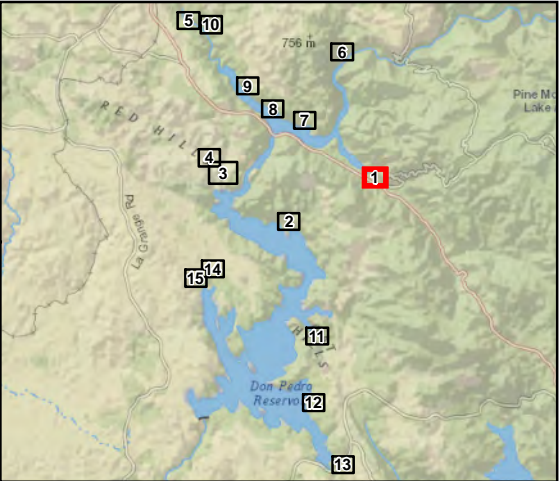
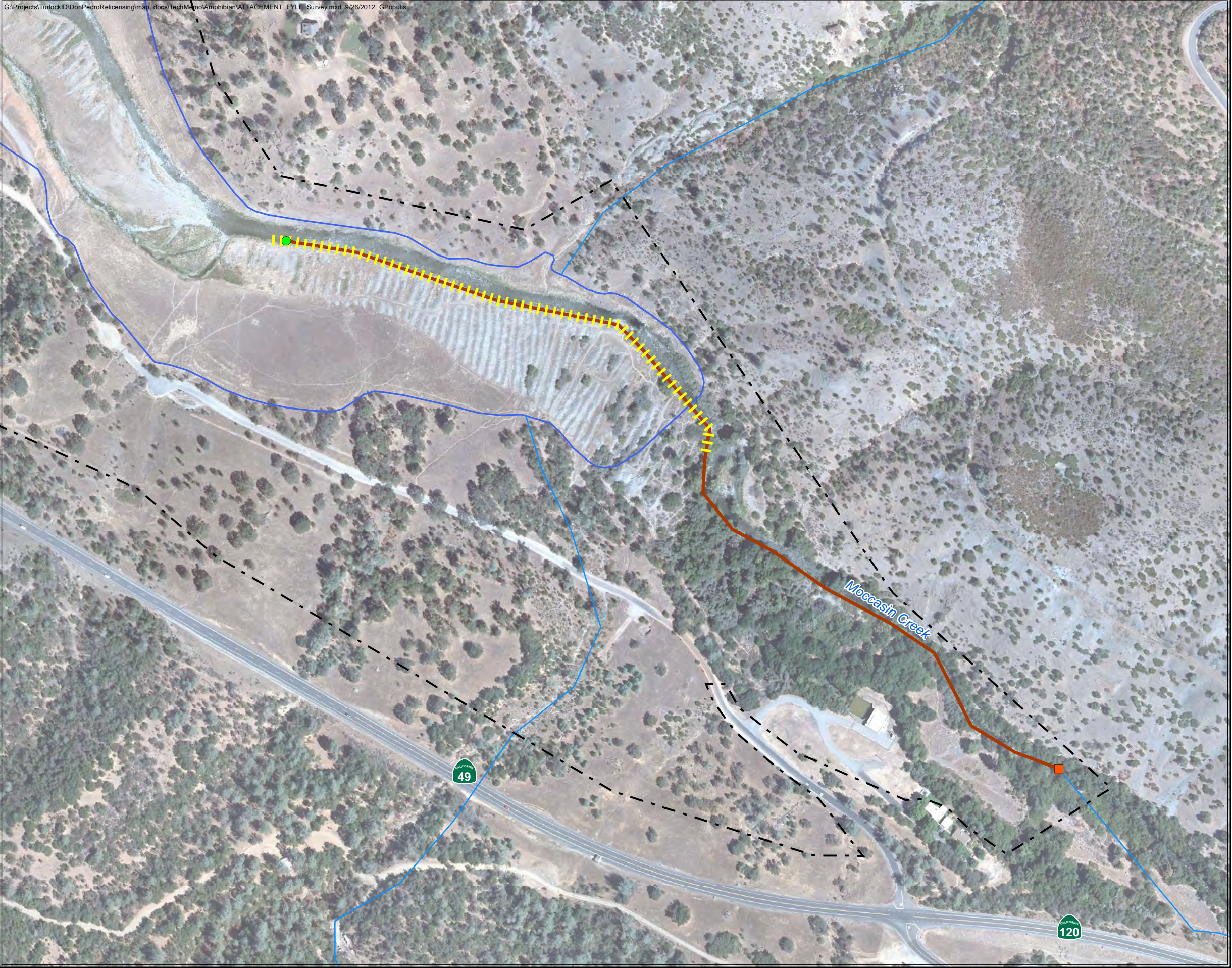
## **PART 2**

### **FYLF SURVEY LOCATIONS**





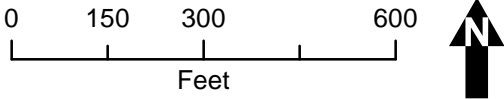




## Moccasin Creek

### FYLF Survey

- End
- Start
- VES Survey Path
- Habitat Assessment Path
- FYLF Historic Location - BLM
- FYLF Historic Location - CNDDDB
- FERC Project Boundary (No. 2299)
- Normal Maximum Water Surface

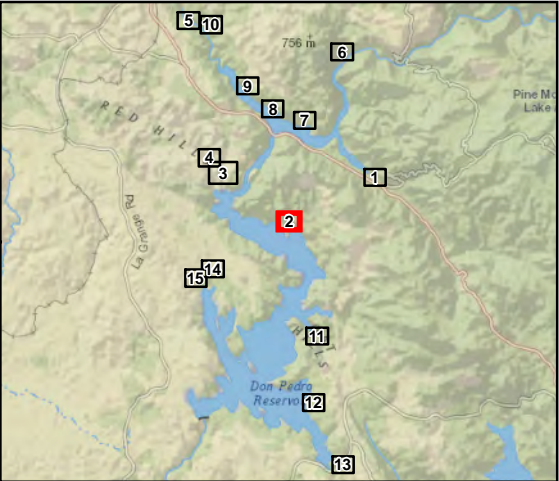


### FYLF Habitat Assessment and Survey Locations

Don Pedro Project (FERC No.2299)

Map information was compiled from the best available sources. No warranty is made for its accuracy or completeness. Data Sources: Hydrography - USGS NHD; Water Surface, FERC Boundary, Recreation & Project Facilities - MID/TID; Roads - ESRI. Data is NAD 83, CA State Plane, Zone III, U.S. Feet.





Page 2 of 15

### Drainage #8

**FYLF Survey**

- End
- Start
- VES Survey Path
- Habitat Assessment Path
- FYLF Historic Location - BLM
- FYLF Historic Location - CNDDDB
- FERC Project Boundary (No. 2299)
- Normal Maximum Water Surface

0150300600

Feet

N

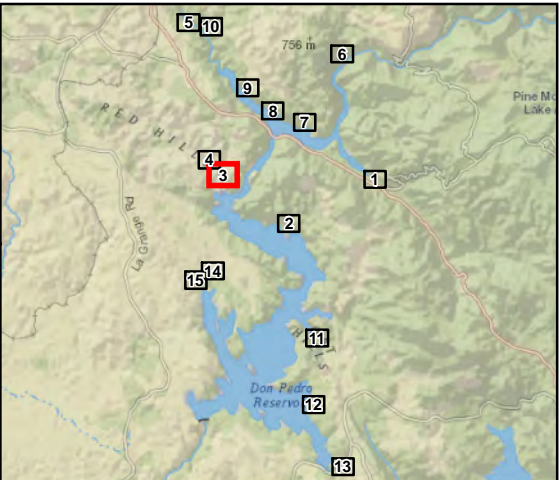
### FYLF Habitat Assessment and Survey Locations

Don Pedro Project (FERC No.2299)

Map information was compiled from the best available sources. No warranty is made for its accuracy or completeness.  
Data Sources: Hydrography - USGS NHD; Water Surface, FERC Boundary, Recreation & Project Facilities - MID/TID; Roads - ESRI.  
Data is NAD 83, CA State Plane, Zone III, U.S. Feet.

©2012 Modesto Irrigation District, Turlock Irrigation District

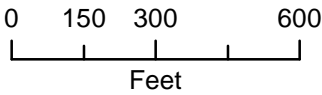




## Poor Man's Gulch

### FYLF Survey

- End
- Start
- VES Survey Path
- Habitat Assessment Path
- FYLF Historic Location - BLM
- FYLF Historic Location - CNDDDB
- FERC Project Boundary (No. 2299)
- Normal Maximum Water Surface

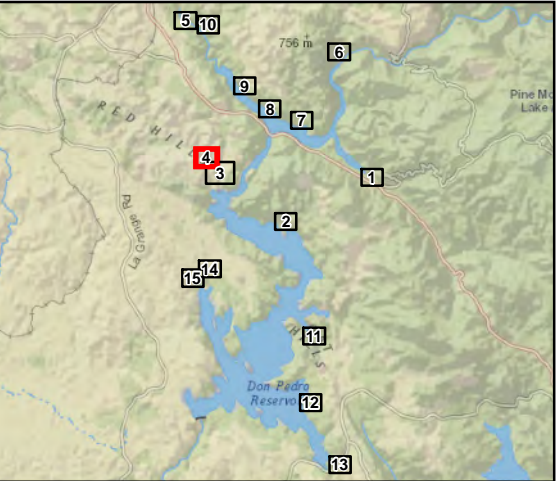


## FYLF Habitat Assessment and Survey Locations

Don Pedro Project (FERC No.2299)

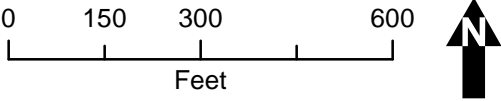
Map information was compiled from the best available sources. No warranty is made for its accuracy or completeness.  
Data Sources: Hydrography - USGS NHD; Water Surface, FERC Boundary, Recreation & Project Facilities - MID/TID; Roads - ESRI.  
Data is NAD 83, CA State Plane, Zone III, U.S. Feet.





**Sixbit Gulch**

- FYLF Survey**
- End
  - Start
  - VES Survey Path
  - Habitat Assessment Path
  - FYLF Historic Location - BLM
  - FYLF Historic Location - CNDDb
  - FERC Project Boundary (No. 2299)
  - Normal Maximum Water Surface

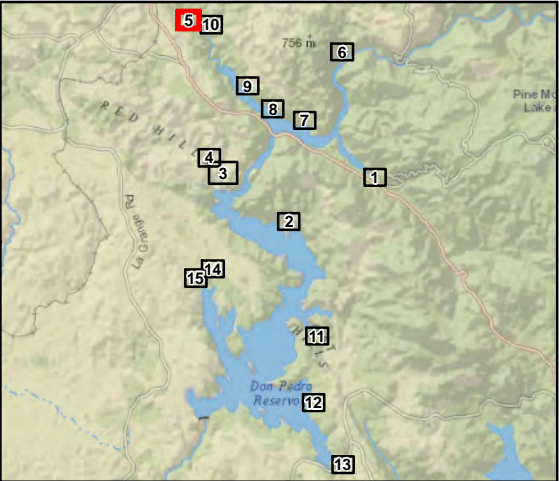


**FYLF Habitat Assessment and Survey Locations**

Don Pedro Project (FERC No.2299)

Map information was compiled from the best available sources. No warranty is made for its accuracy or completeness. Data Sources: Hydrography - USGS NHD; Water Surface, FERC Boundary, Recreation & Project Facilities - MID/TID; Roads - ESRI. Data is NAD 83, CA State Plane, Zone III, U.S. Feet.

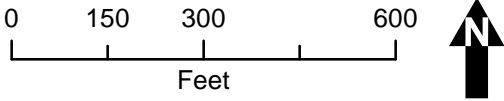




## Woods Creek

### FYLF Survey

- End
- Start
- VES Survey Path
- Habitat Assessment Path
- FYLF Historic Location - BLM
- FYLF Historic Location - CNDDDB
- FERC Project Boundary (No. 2299)
- Normal Maximum Water Surface

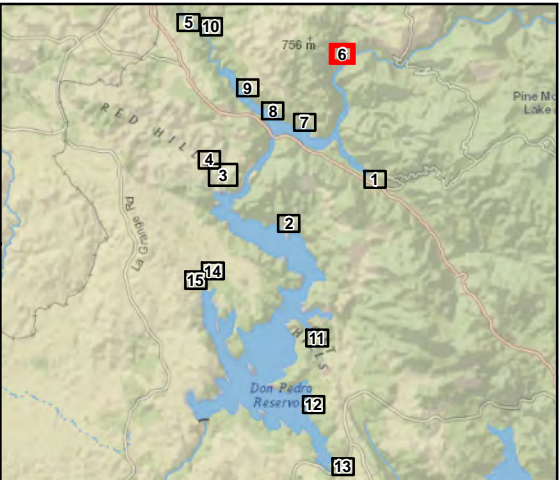


## FYLF Habitat Assessment and Survey Locations

Don Pedro Project (FERC No.2299)

Map information was compiled from the best available sources. No warranty is made for its accuracy or completeness. Data Sources: Hydrography - USGS NHD; Water Surface, FERC Boundary, Recreation & Project Facilities - MID/TID; Roads - ESRI. Data is NAD 83, CA State Plane, Zone III, U.S. Feet.

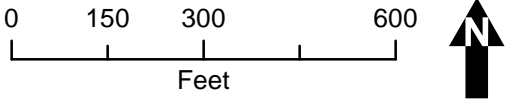




## Rough and Ready Creek

### FYLF Survey

- End
- Start
- VES Survey Path
- Habitat Assessment Path
- FYLF Historic Location - BLM
- FYLF Historic Location - CNDDDB
- FERC Project Boundary (No. 2299)
- Normal Maximum Water Surface

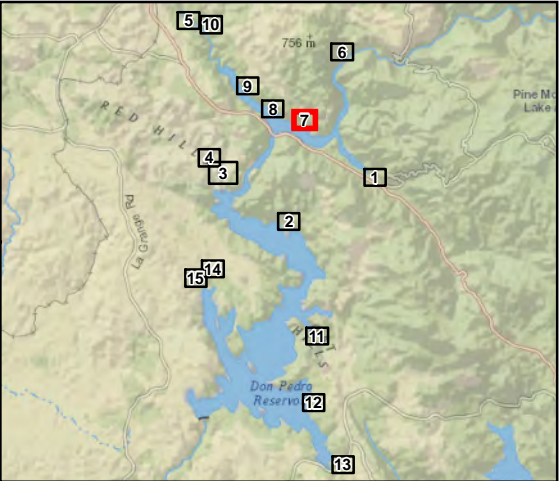


### FYLF Habitat Assessment and Survey Locations

Don Pedro Project (FERC No.2299)

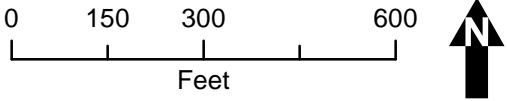
Map information was compiled from the best available sources. No warranty is made for its accuracy or completeness. Data Sources: Hydrography - USGS NHD; Water Surface, FERC Boundary, Recreation & Project Facilities - MID/TID; Roads - ESRI. Data is NAD 83, CA State Plane, Zone III, U.S. Feet.





**Kanaka Creek**

- FYLF Survey**
- End
  - Start
  - VES Survey Path
  - Habitat Assessment Path
  - FYLF Historic Location - BLM
  - FYLF Historic Location - CNDDb
  - FERC Project Boundary (No. 2299)
  - Normal Maximum Water Surface

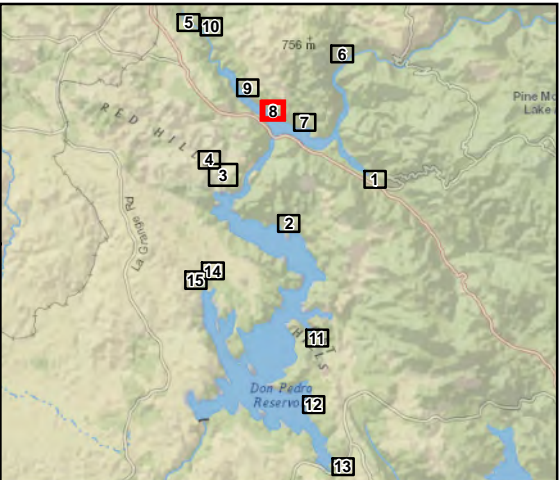


**FYLF Habitat Assessment and Survey Locations**

Don Pedro Project (FERC No.2299)

Map information was compiled from the best available sources. No warranty is made for its accuracy or completeness. Data Sources: Hydrography - USGS NHD; Water Surface, FERC Boundary, Recreation & Project Facilities - MID/TID; Roads - ESRI. Data is NAD 83, CA State Plane, Zone III, U.S. Feet.

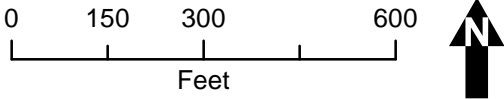




## Smart's Gulch

### FYLF Survey

- End
- Start
- VES Survey Path
- Habitat Assessment Path
- FYLF Historic Location - BLM
- FYLF Historic Location - CNDDDB
- FERC Project Boundary (No. 2299)
- Normal Maximum Water Surface

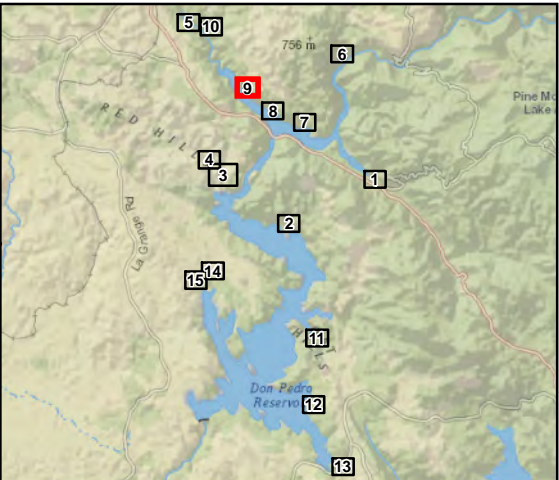


### FYLF Habitat Assessment and Survey Locations

Don Pedro Project (FERC No.2299)

Map information was compiled from the best available sources. No warranty is made for its accuracy or completeness. Data Sources: Hydrography - USGS NHD; Water Surface, FERC Boundary, Recreation & Project Facilities - MID/TID; Roads - ESRI. Data is NAD 83, CA State Plane, Zone III, U.S. Feet.

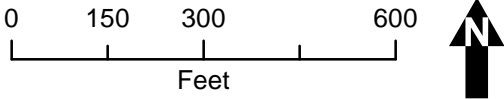




## Blue Gulch

### FYLF Survey

- End
- Start
- VES Survey Path
- Habitat Assessment Path
- FYLF Historic Location - BLM
- FYLF Historic Location - CNDDDB
- FERC Project Boundary (No. 2299)
- Normal Maximum Water Surface

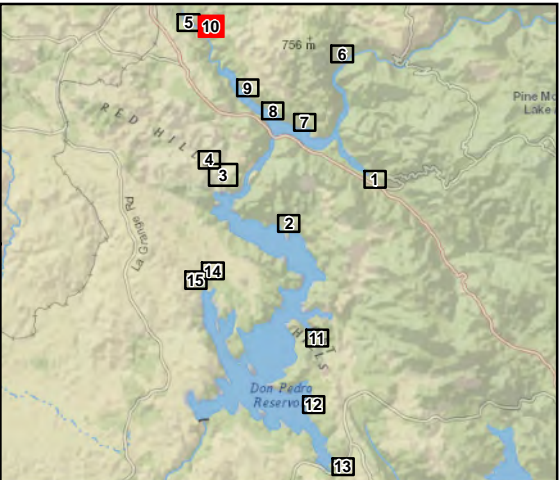


### FYLF Habitat Assessment and Survey Locations

Don Pedro Project (FERC No.2299)

Map information was compiled from the best available sources. No warranty is made for its accuracy or completeness. Data Sources: Hydrography - USGS NHD; Water Surface, FERC Boundary, Recreation & Project Facilities - MID/TID; Roads - ESRI. Data is NAD 83, CA State Plane, Zone III, U.S. Feet.

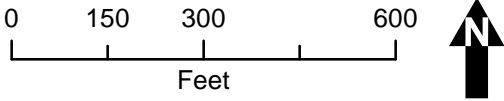




## Sullivan Creek

### FYLF Survey

- End
- Start
- VES Survey Path
- Habitat Assessment Path
- FYLF Historic Location - BLM
- FYLF Historic Location - CNDDDB
- FERC Project Boundary (No. 2299)
- Normal Maximum Water Surface

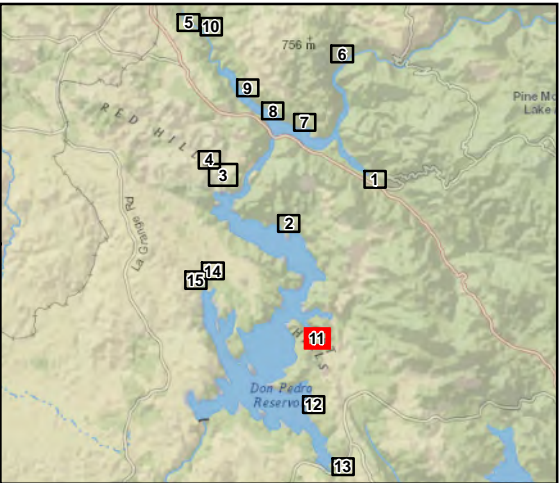


## FYLF Habitat Assessment and Survey Locations

Don Pedro Project (FERC No.2299)

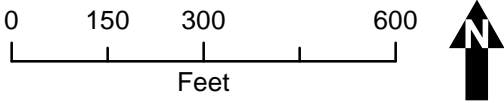
Map information was compiled from the best available sources. No warranty is made for its accuracy or completeness. Data Sources: Hydrography - USGS NHD; Water Surface, FERC Boundary, Recreation & Project Facilities - MID/TID; Roads - ESRI. Data is NAD 83, CA State Plane, Zone III, U.S. Feet.





### Willow Creek

- FYLF Survey**
- End
  - Start
  - VES Survey Path
  - Habitat Assessment Path
  - FYLF Historic Location - BLM
  - FYLF Historic Location - CNDDDB
  - FERC Project Boundary (No. 2299)
  - Normal Maximum Water Surface

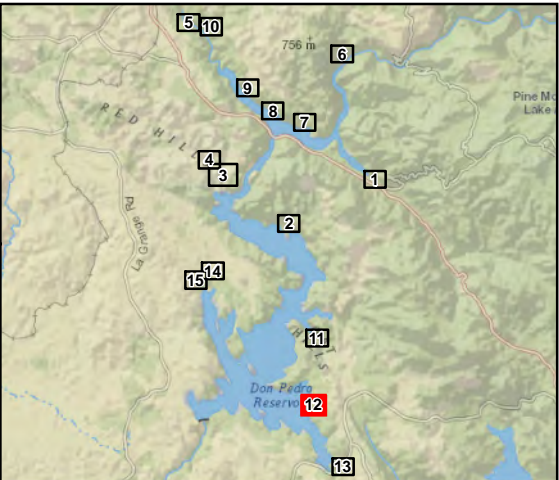


### FYLF Habitat Assessment and Survey Locations

Don Pedro Project (FERC No.2299)

Map information was compiled from the best available sources. No warranty is made for its accuracy or completeness. Data Sources: Hydrography - USGS NHD; Water Surface, FERC Boundary, Recreation & Project Facilities - MID/TID; Roads - ESRI. Data is NAD 83, CA State Plane, Zone III, U.S. Feet.

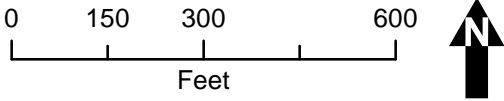




## Fleming Creek

### FYLF Survey

- End
- Start
- VES Survey Path
- Habitat Assessment Path
- FYLF Historic Location - BLM
- FYLF Historic Location - CNDDDB
- FERC Project Boundary (No. 2299)
- Normal Maximum Water Surface

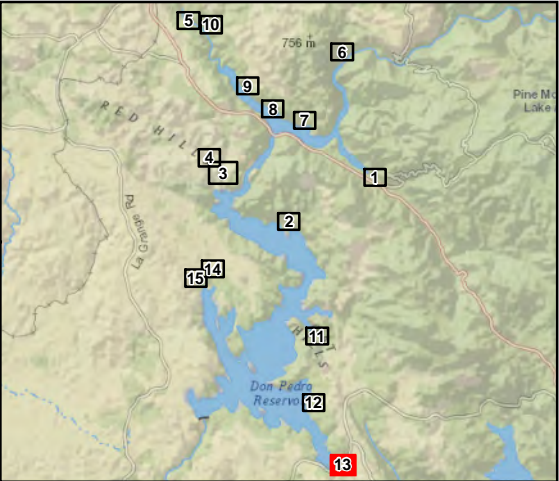


### FYLF Habitat Assessment and Survey Locations

Don Pedro Project (FERC No.2299)

Map information was compiled from the best available sources. No warranty is made for its accuracy or completeness. Data Sources: Hydrography - USGS NHD; Water Surface, FERC Boundary, Recreation & Project Facilities - MID/TID; Roads - ESRI. Data is NAD 83, CA State Plane, Zone III, U.S. Feet.

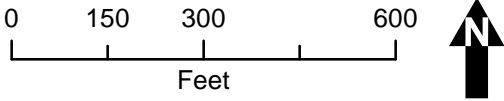




# Rogers Creek

## FYLF Survey

- End
- Start
- VES Survey Path
- Habitat Assessment Path
- FYLF Historic Location - BLM
- FYLF Historic Location - CNDDDB
- FERC Project Boundary (No. 2299)
- Normal Maximum Water Surface

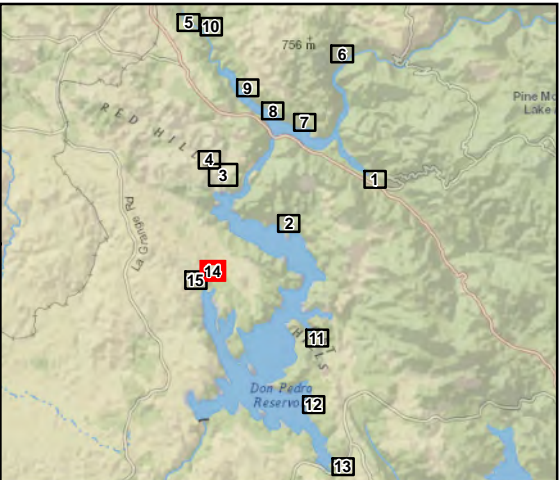


## FYLF Habitat Assessment and Survey Locations

Don Pedro Project (FERC No.2299)

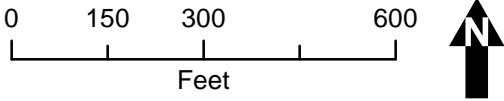
Map information was compiled from the best available sources. No warranty is made for its accuracy or completeness. Data Sources: Hydrography - USGS NHD; Water Surface, FERC Boundary, Recreation & Project Facilities - MID/TID; Roads - ESRI. Data is NAD 83, CA State Plane, Zone III, U.S. Feet.





### Big Creek

- FYLF Survey**
- End
  - Start
  - VES Survey Path
  - Habitat Assessment Path
  - FYLF Historic Location - BLM
  - FYLF Historic Location - CNDDDB
  - FERC Project Boundary (No. 2299)
  - Normal Maximum Water Surface

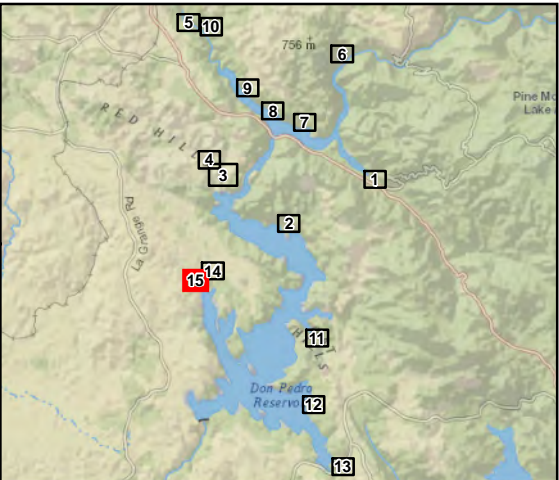


### FYLF Habitat Assessment and Survey Locations

Don Pedro Project (FERC No.2299)

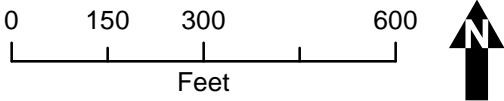
Map information was compiled from the best available sources. No warranty is made for its accuracy or completeness. Data Sources: Hydrography - USGS NHD; Water Surface, FERC Boundary, Recreation & Project Facilities - MID/TID; Roads - ESRI. Data is NAD 83, CA State Plane, Zone III, U.S. Feet.





## West Fork Big Creek

- FYLF Survey**
- End
  - Start
  - VES Survey Path
  - Habitat Assessment Path
  - FYLF Historic Location - BLM
  - FYLF Historic Location - CNDDDB
  - FERC Project Boundary (No. 2299)
  - Normal Maximum Water Surface



## FYLF Habitat Assessment and Survey Locations

Don Pedro Project (FERC No.2299)

Map information was compiled from the best available sources. No warranty is made for its accuracy or completeness. Data Sources: Hydrography - USGS NHD; Water Surface, FERC Boundary, Recreation & Project Facilities - MID/TID; Roads - ESRI. Data is NAD 83, CA State Plane, Zone III, U.S. Feet.







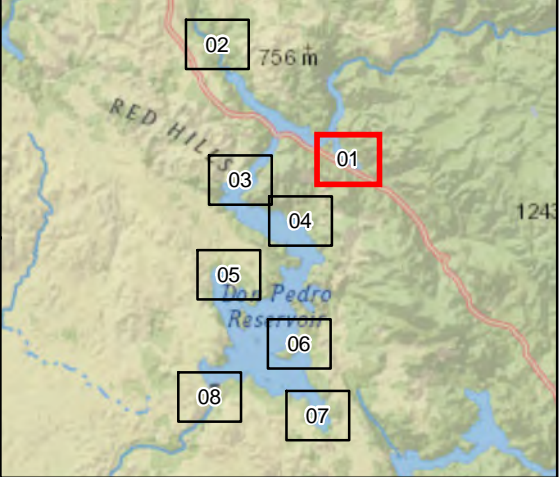
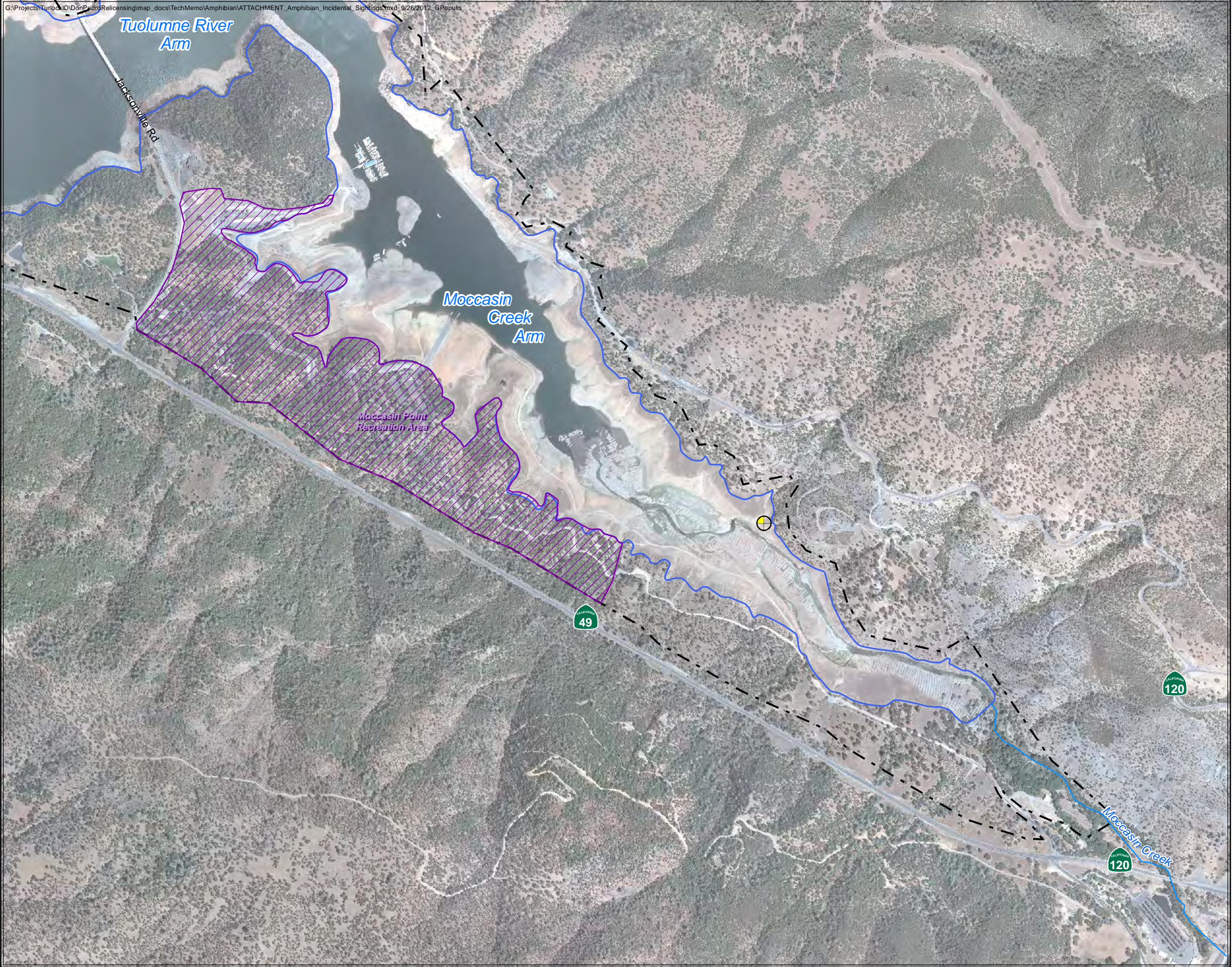
### **PART 3**

## **INCIDENTAL OBSERVATIONS OF WPT, EXOTIC AMPHIBIANS AND PREDATORY SPECIES DURING RELICENSING STUDIES**









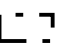




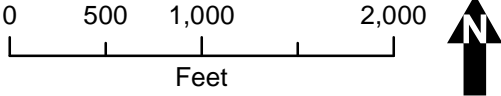




### Incidental Observations

#### Species

-  Bullfrog
-  Crayfish
-  Garter Snake
-  Red Eared Slider
-  Western Pond Turtle
-  Recreation Area
-  FERC Project Boundary (No. 2299)
-  County Boundary
-  Normal Maximum Water Surface

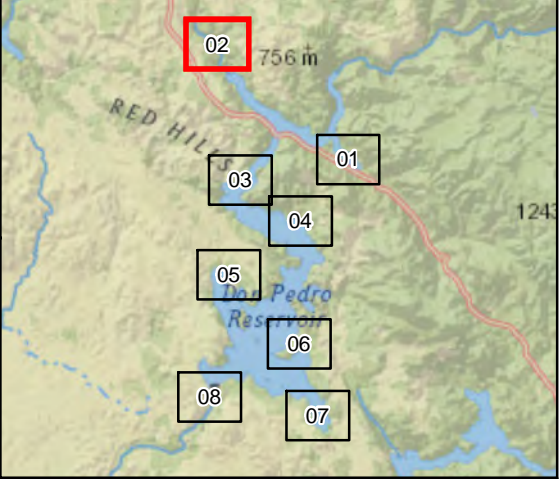


### Incidental Observations of WPT, Exotic Amphibians and Predatory Species

Don Pedro Project (FERC No.2299)

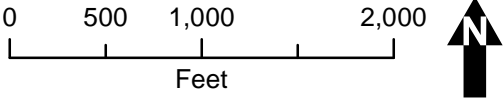
Map information was compiled from the best available sources. No warranty is made for its accuracy or completeness.  
Data Sources: Hydrography - USGS NHD; Water Surface, FERC Boundary, Recreation & Project Facilities - MID/TID; Roads - Esri.  
Data is NAD 83, CA State Plane, Zone III, U.S. Feet.





Incidental Observations

- Species**
- Bullfrog
  - Crayfish
  - Garter Snake
  - Red Eared Slider
  - Western Pond Turtle
- Recreation Area
- FERC Project Boundary (No. 2299)
- County Boundary
- Normal Maximum Water Surface

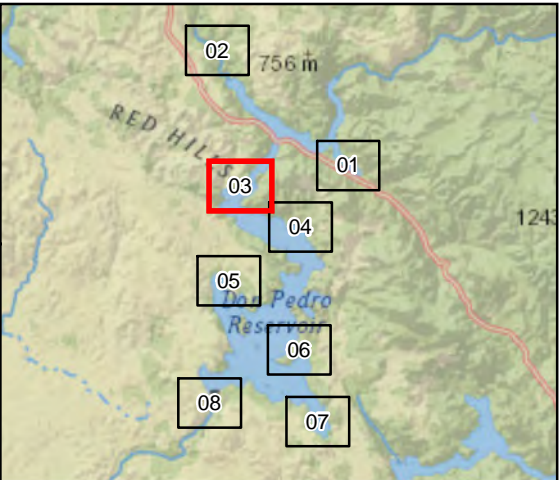


Incidental Observations of WPT, Exotic Amphibians and Predatory Species

Don Pedro Project (FERC No.2299)










Map information was compiled from the best available sources. No warranty is made for its accuracy or completeness. Data Sources: Hydrography - USGS NHD; Water Surface, FERC Boundary, Recreation & Project Facilities - MID/TID; Roads - Esri. Data is NAD 83, CA State Plane, Zone III, U.S. Feet.

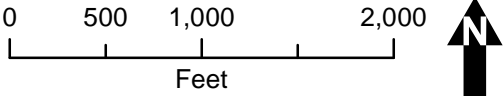




**Incidental Observations**

**Species**

-  Bullfrog
-  Crayfish
-  Garter Snake
-  Red Eared Slider
-  Western Pond Turtle
-  Recreation Area
-  FERC Project Boundary (No. 2299)
-  County Boundary
-  Normal Maximum Water Surface

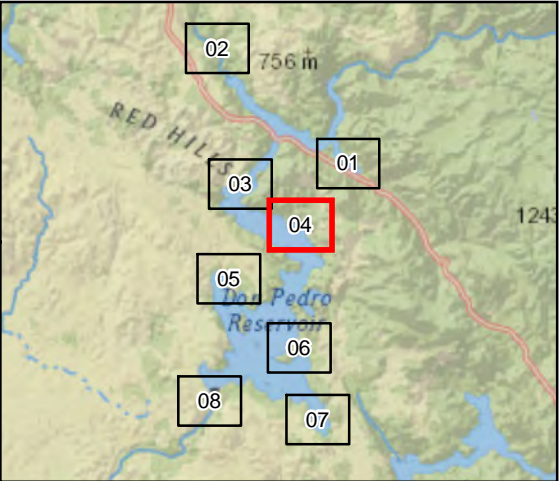


**Incidental Observations of WPT,  
Exotic Amphibians and  
Predatory Species**

Don Pedro Project (FERC No.2299)










Map information was compiled from the best available sources. No warranty is made for its accuracy or completeness. Data Sources: Hydrography - USGS NHD; Water Surface, FERC Boundary, Recreation & Project Facilities - MID/TID; Roads - Esri. Data is NAD 83, CA State Plane, Zone III, U.S. Feet.

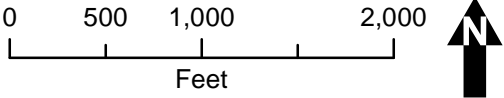




Incidental Observations

Species

-  Bullfrog
-  Crayfish
-  Garter Snake
-  Red Eared Slider
-  Western Pond Turtle
-  Recreation Area
-  FERC Project Boundary (No. 2299)
-  County Boundary
-  Normal Maximum Water Surface

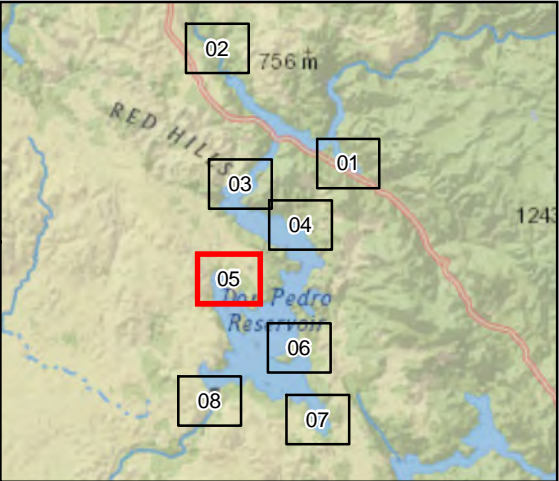


Incidental Observations of WPT,  
Exotic Amphibians and  
Predatory Species

Don Pedro Project (FERC No.2299)










Map information was compiled from the best available sources.  
No warranty is made for its accuracy or completeness.  
Data Sources: Hydrography - USGS NHD; Water Surface,  
FERC Boundary, Recreation & Project Facilities - MID/TID;  
Roads - Esri.  
Data is NAD 83, CA State Plane, Zone III, U.S. Feet.

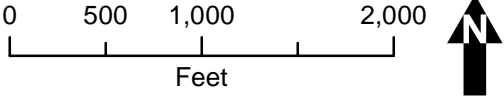




**Incidental Observations**

**Species**

-  Bullfrog
-  Crayfish
-  Garter Snake
-  Red Eared Slider
-  Western Pond Turtle
-  Recreation Area
-  FERC Project Boundary (No. 2299)
-  County Boundary
-  Normal Maximum Water Surface

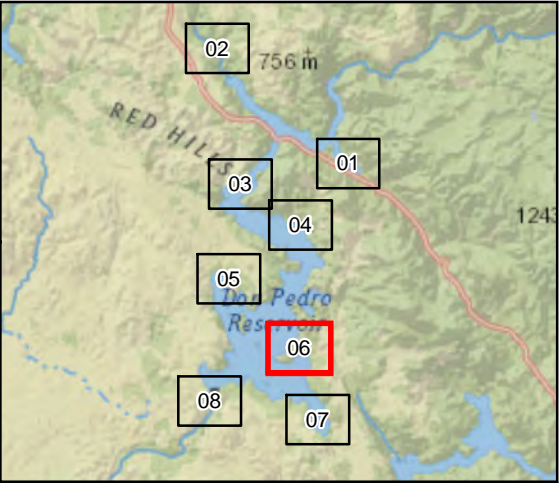


**Incidental Observations of WPT,  
Exotic Amphibians and  
Predatory Species**

Don Pedro Project (FERC No.2299)

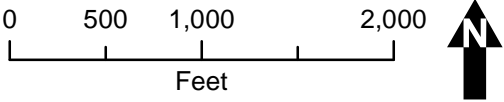
Map information was compiled from the best available sources. No warranty is made for its accuracy or completeness.  
Data Sources: Hydrography - USGS NHD; Water Surface, FERC Boundary, Recreation & Project Facilities - MID/TID; Roads - Esri.  
Data is NAD 83, CA State Plane, Zone III, U.S. Feet.





Incidental Observations

- Species**
- Bullfrog
  - Crayfish
  - Garter Snake
  - Red Eared Slider
  - Western Pond Turtle
- Recreation Area
- FERC Project Boundary (No. 2299)
- County Boundary
- Normal Maximum Water Surface

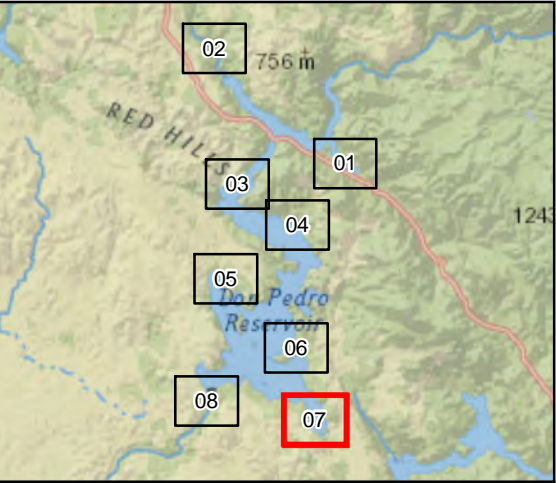


Incidental Observations of WPT,  
Exotic Amphibians and  
Predatory Species

Don Pedro Project (FERC No.2299)

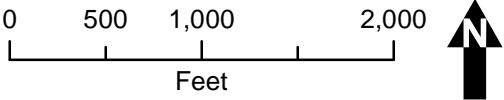
Map information was compiled from the best available sources. No warranty is made for its accuracy or completeness. Data Sources: Hydrography - USGS NHD; Water Surface, FERC Boundary, Recreation & Project Facilities - MID/TID; Roads - Esri. Data is NAD 83, CA State Plane, Zone III, U.S. Feet.





**Incidental Observations**

- Species**
- Bullfrog
  - Crayfish
  - Garter Snake
  - Red Eared Slider
  - Western Pond Turtle
- Recreation Area
- FERC Project Boundary (No. 2299)
- County Boundary
- Normal Maximum Water Surface

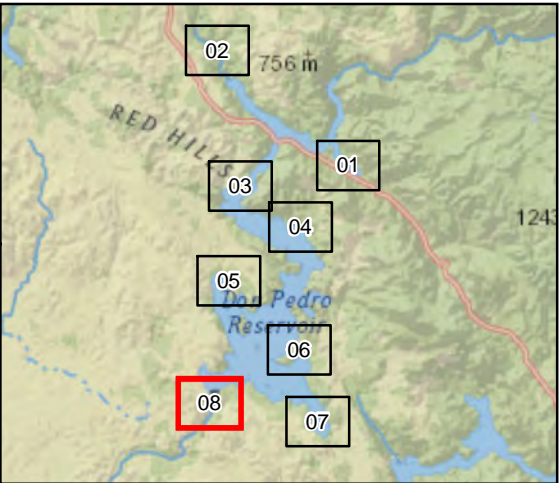


**Incidental Observations of WPT,  
Exotic Amphibians and  
Predatory Species**

Don Pedro Project (FERC No.2299)

Map information was compiled from the best available sources. No warranty is made for its accuracy or completeness. Data Sources: Hydrography - USGS NHD; Water Surface, FERC Boundary, Recreation & Project Facilities - MID/TID; Roads - Esri. Data is NAD 83, CA State Plane, Zone III, U.S. Feet.

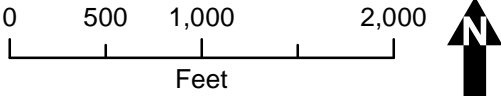




**Incidental Observations**

**Species**

- Bullfrog
- Crayfish
- Garter Snake
- Red Eared Slider
- Western Pond Turtle
- Recreation Area
- FERC Project Boundary (No. 2299)
- County Boundary
- Normal Maximum Water Surface



**Incidental Observations of WPT,  
Exotic Amphibians and  
Predatory Species**

Don Pedro Project (FERC No.2299)

Map information was compiled from the best available sources. No warranty is made for its accuracy or completeness. Data Sources: Hydrography - USGS NHD; Water Surface, FERC Boundary, Recreation & Project Facilities - MID/TID; Roads - Esri. Data is NAD 83, CA State Plane, Zone III, U.S. Feet.